

NOTES:

- SEE FINISH SCHEDULE SHEET FOR MORE INFORMATION ON FLOORS, WALLS, CEILINGS, AND OTHER RELATED WORK.

D3 NOTES
SCALE: NTS

NEW WORK PLAN LEGEND

- EXISTING WALL TO REMAIN
- EXISTING DOOR TO REMAIN. DOOR IS TO BE PROPERLY PREPED AND PAINTED - SEE DOOR SCHEDULE FOR ADDITIONAL INFORMATION
- NEW WALL - SEE PARTITION TYPES
- NEW DOOR - SEE DOOR SCHEDULE

E (EAST)
N (NORTH) N
D403 S (SOUTH)
W (WEST) ELEVATION REFERENCE MARK

General Notes

Microbial Cleaning

- Evidence of microbial growth has been observed in isolated areas throughout the building. When building materials evidencing microbial growth are not removed during the selective demolition work, the areas of microbial growth shall be cleaned and sanitized prior to covering with new materials or painted coatings. As a minimum, the recommendations included in the EPA's Mold Remediation in Schools and Commercial Buildings (EPA 402-K-01-001) and the Institute of Inspection Cleaning and Restoration Certification (IICRC) Standard and Reference Guide for Professional Water Damage Restoration (S520-2008) should be implemented during the work.
- The following general procedures apply to the work area where obvious microbial growth is observed, extended as necessary to remove visible microbial growth.
 - Clean porous and non-porous building materials by HEPA vacuuming and clean by wet wiping with a mild detergent then sanitize with a dilute bleach and water solution (1:10). A low odor anti-microbial cleaning and sanitizing product may be used as a substitute upon Engineer approval.
 - A preliminary visual observation will be performed of each work area by Owners representative following notification that said area has been properly cleaned. Areas will be observed for the presence of visible contamination and general dust and debris.
 - Owner's representative will collect post-construction air samples for fungi following fine cleaning, HVAC commissioning and prior to occupancy.

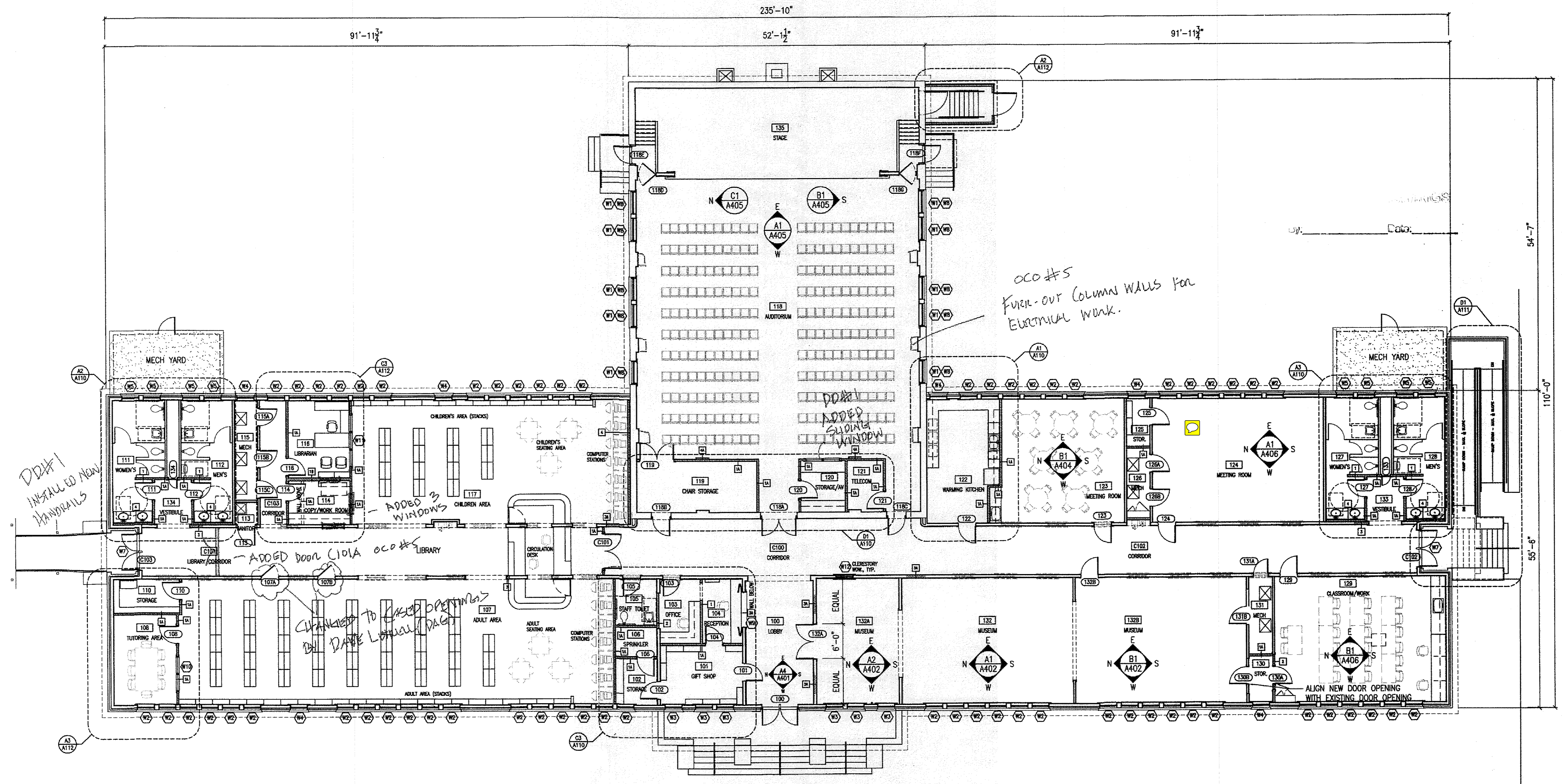
Paint Containing Lead

- Painted components within the interior and exterior of the facility were identified to contain lead at concentrations greater than laboratory detection limits but less than the 0.5 percent Lead-Based Paint (LBP) Standard by weight. This paint is considered paint containing lead (PCL) and work activities impacting these the paint are regulated by OSHA. Typical components include painted plaster walls and wood components. All painted wood components should be considered PCL.
- Disturbance of lead-containing material shall be performed in accordance with the OSHA lead standard for construction industry regulation 29 CFR 1926.62. Contractor acknowledges and agrees that he is solely responsible for enforcing worker protection requirements at least equal to those required by federal regulations.
- Any PCL or LBP removal and disposal activities shall be performed in accordance with the methods and procedures outlined in 40 CFR 261-263, 49 CFR 171-179, and 29 CFR 1926.62. PCL material shall be removed in intact condition. Manual or power sanding or grinding of lead surfaces or materials is not permitted unless tools are equipped with HEPA attachments or wet methods.
- Any chips, dusts, contaminated soils and sludges containing PCL debris generated by the work shall be segregated and managed in accordance with the RCRA and FDEP hazardous waste rules. If the debris is characterized as hazardous, the Contractor will dispose according to applicable local, state and federal regulations. If the debris is characterized as non-hazardous, the materials shall be disposed at a subtitle D landfill in accordance with FDEP regulations.

D1 FLOOR PLAN (BASEMENT)
SCALE: 3/32"=1'-0"

D2 LEGEND
SCALE: NTS

D3 GENERAL NOTES
SCALE: NTS



A1 FLOOR PLAN
SCALE: 3/32"=1'-0"



DAG ARCHITECTS INC.
40 S. PALAFOX PL. PENSACOLA, FLORIDA 32502
TELEPHONE: 850-837-8152 FAX: 850-654-4276
AA-C000745

OWNERSHIP OF INSTRUMENTS OF SERVICE
ALL REPORTS, PLANS, SPECIFICATIONS, COMPUTER FILES, FIELD DATA, NOTES AND OTHER DOCUMENTS AND INSTRUMENTS PREPARED BY THE CONSULTANT AS INSTRUMENTS OF SERVICE SHALL REMAIN THE PROPERTY OF THE CONSULTANT. THE CONSULTANT SHALL RETAIN ALL COMMON LAW, STATUTORY AND OTHER RESERVED RIGHTS, INCLUDING THE COPYRIGHT THEREON.

CONSTRUCTION DOCUMENTS

Molino School
Renovation and Restoration
6450 Hwy 95-A N. Molino, FL 32577

Revision

Date:	No.	Description:

Drawn By: WSB
Checked By: OEG

Date: 7-12-2011

Project No.: 09052

Drawing Title:
FLOOR PLAN

Drawing No.: **A101**