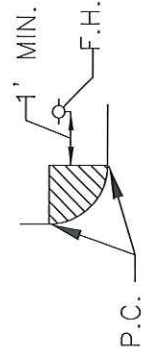


YELLOW PAINTED AMERICAN DARLING B-84-B OR CLOW MEDALLION
WITH ~~OPTIONAL~~ STORZ CONNECTION (REQUIRED)

R.O.W.
1'-0"

5" STORZ CONNECTION



2" MIN.
6" MAX.

24" SQUARE

PLAN VIEW
N.T.S.

FINISH GRADE AT
HYDRANT

6" THICK SLAB FOR VALVE
IN UNSURFACED OR
ASPHALT AREAS.

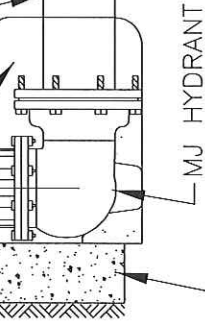
6" ANCHOR COUPLING OR
MJ RESTRAINERS
(MEGALUG OR ENGINEER
APPROVED EQUAL)

MIN. 7 CUBIC FEET OF
WASHED GRAVEL OR
CLEAN STONE FILL

6" ANCHOR COUPLING OR
MJ RESTRAINERS
(MEGALUG OR ENGINEER
APPROVED EQUAL)

MJ GATE
VALVE

MJxMJ TEE



THRUST BLOCK MUST
NOT BLOCK WEEP HOLE

VARIABLE
THRUST BLOCK

THRUST BLOCK
(REFER TO DETAIL)

FIRE HYDRANT INSTALLATION

N.T.S.

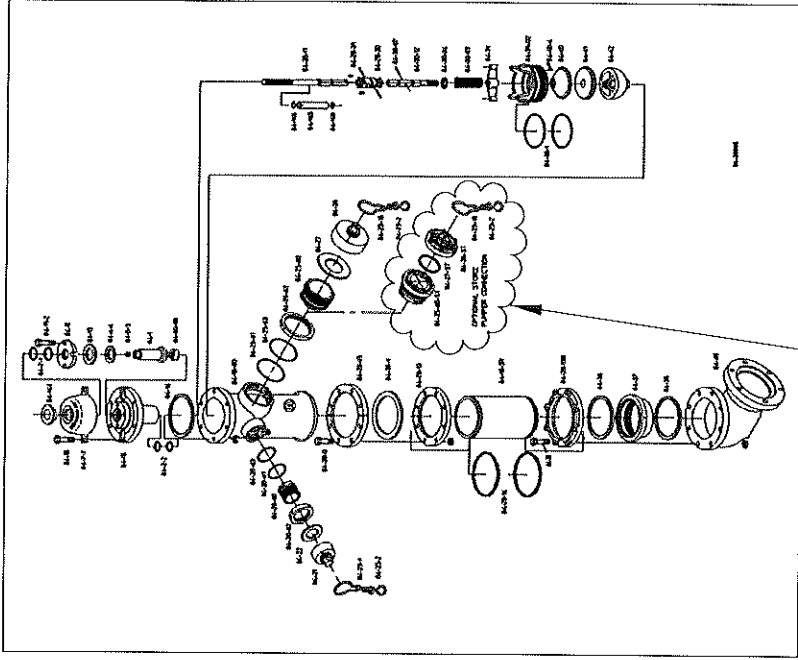
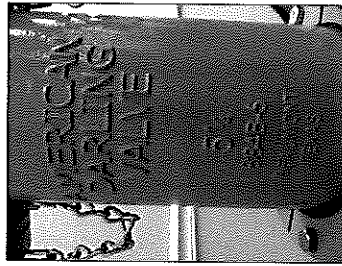
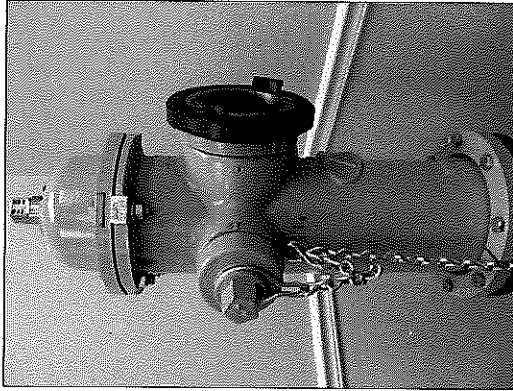
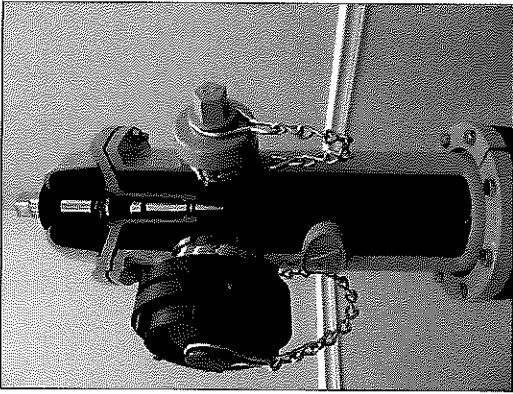
ENGINEERING
DESIGN MANUAL

FIRE HYDRANT
SHEET 1

FIRE HYDRANT INSTALLATION NOTES

1. IN GENERAL, ALL FIRE HYDRANTS SHALL CONFORM TO AWWA STANDARD SPECIFICATIONS FOR FIRE HYDRANTS FOR ORDINARY WATER WORKS SERVICE, C-502. SEE SPECIFICATION SECTION FOR ADDITIONAL REQUIREMENTS
2. ACTUAL VALVE LOCATION WILL DEPEND ON LOCATION OF WATER MAIN.
3. F.H. NO CLOSER THAN 18" TO EXISTING OR PROPOSED SIDEWALKS. (USUAL)
4. STANDARD BURY DEPTH 4' FEET
5. SET FIRE HYDRANT ON THE LOT LINE EXTENDED WHEN POSSIBLE.
6. FIRE HYDRANT SHALL BE LOCATED MINIMUM 1 FT. OUTSIDE OF THE AREA BETWEEN THE P.C.'S OF THE CORNER TURNING RADIUS AT INTERSECTIONS. (SEE PLAN VIEW THIS DETAIL)
7. FIRE HYDRANTS SHALL BE YELLOW IN COLOR.
8. DRAINAGE BED SHALL CONSIST OF AGGREGATE TYPE A1 - DRAIN ROCK WITH A MIN. VOLUME OF 7 CU. FT. DRAIN BED SHALL EXTEND A MIN. 6" ABOVE DRAIN OUTLET.
9. USE 6" D.I. NIPPLE W/M.J. RETAINER GLANDS IF DISTANCE BETWEEN VALVE & FIRE HYDRANT MUST BE GREATER THAN 17". FIRE HYDRANT TO BE BLOCKED AGAINST FIRM SOIL AS SHOWN.
11. ALL FIRE HYDRANTS SHALL BE INSTALLED PLUMB.
12. LARGE NOZZLE FACES ROAD, UNLESS OTHERWISE NOTED. ROTATE BARREL AS REQUIRED.
13. HYDRANT SHOULD NOT BE SET CLOSER THAN 4' TO OBSTRUCTIONS THAT ARE IN LINE WITH NOZZLE.
14. M.J. ANCHOR TEE FOR 16" AND SMALLER. WHEN USING REGULAR M.J. TEE USE 13" ADAPTER NIPPLE BETWEEN TEE AND VALVE.
15. AMERICAN DARLING B-84-B OR CLOW MEDALLION HYDRANT HYDRANTS SHALL BE PROVIDED WITH THE OPTIONAL 5" STORZ PUMPER CONNECTIONS FROM FACTORY.
17. INSTALL (1) 6" M.J. 90° BEND IF SHOWN ON PLANS TO REDIRECT THE HYDRANT LEAD AT NO ADDITIONAL EXPENSE.
18. INSTALL COATED TRACER WIRE FROM BOTTOM FLANGE OF HYDRANT TO END OF SERVICE LINE
19. ALL DUCTILE IRON FITTINGS TO BE WRAPPED IN 3 MIL POLYETHYLENE.

NOTES:



EXPLODED DRAWING TAKEN FROM
AMERICAN FLOW CONTROL
SALES BROCHURE

5" STORZ CONNECTION
REQUIRED FROM FACTORY

AMERICAN DARLING B-84-B OR CLOW MEDALLION
WITH THE OPTIONAL 5" STORZ PUMPER CONNECTION

ENGINEERING
DESIGN MANUAL

FIRE HYDRANT
SHEET 3