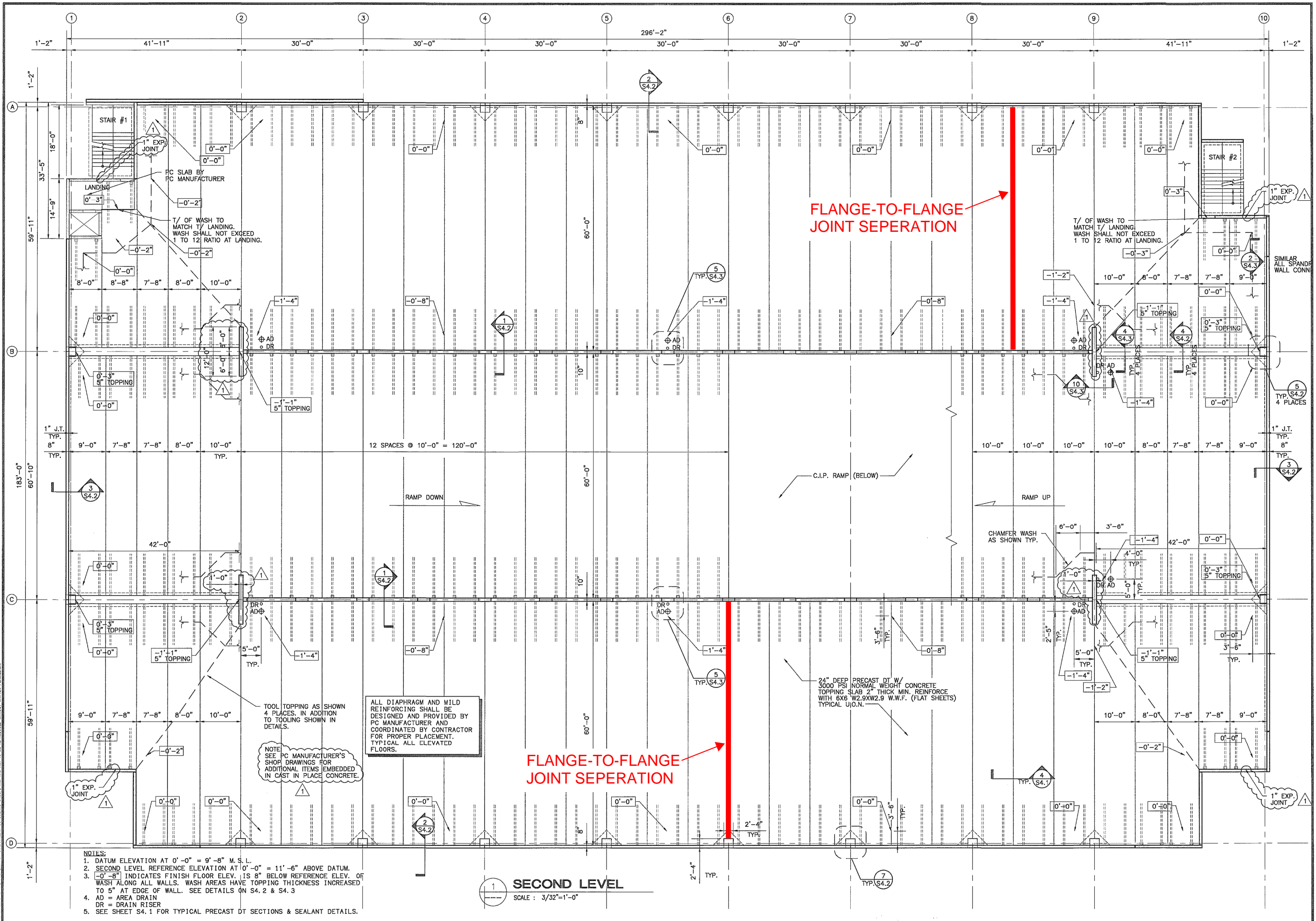




CUT LINE



- NOTES:
- DATUM ELEVATION AT 0'-0" = 9'-8" M.S.L.
 - SECOND LEVEL REFERENCE ELEVATION AT 0'-0" = 11'-6" ABOVE DATUM.
 - 0'-8" INDICATES FINISH FLOOR ELEV. IS 8" BELOW REFERENCE ELEV. OF WASH ALONG ALL WALLS. WASH AREAS HAVE TOPPING THICKNESS INCREASED TO 5" AT EDGE OF WALL. SEE DETAILS ON S4.2 & S4.3
 - AD = AREA DRAIN
DR = DRAIN RISER
 - SEE SHEET S4.1 FOR TYPICAL PRECAST DT SECTIONS & SEALANT DETAILS.

ALL DIAPHRAGM AND MILD REINFORCING SHALL BE DESIGNED AND PROVIDED BY PC MANUFACTURER AND COORDINATED BY CONTRACTOR FOR PROPER PLACEMENT. TYPICAL ALL ELEVATED FLOORS.

TOOL TOPPING AS SHOWN 4 PLACES. IN ADDITION TO TOOLING SHOWN IN DETAILS.

NOTE: SEE PC MANUFACTURER'S SHOP DRAWINGS FOR ADDITIONAL ITEMS EMBEDDED IN CAST IN PLACE CONCRETE.

FLANGE-TO-FLANGE JOINT SEPERATION

FLANGE-TO-FLANGE JOINT SEPERATION

1 SECOND LEVEL
SCALE: 3/32"=1'-0"



PLANNING
ARCHITECTURE
INTERIOR DESIGN
LENDING SUPPORT SERVICES
CONSTRUCTION ADMINISTRATION
AUTOMATED FACILITY INFORMATION
BUILDING DIAGNOSTICS/REMEDIATION
DESIGN/BUILD

Bullock Tice Associates
509 East Cervantes Suite B
Pensacola, FL 32201
AAC00174
www.bullocktice.com
Fax: 850.432.5208
Phone: 850.434.5444

CONSULTANTS
CARANIKILAM CONSULTING
5111 N. 12TH AV. 32504
PENSACOLA, FL
(850) 484-8011

SCHMIDT DELL COOK & ASS.
139 E. GOVERNMENT ST.
PENSACOLA, FL
(850) 438-0050

ESCAMBIA COUNTY
PARKING GARAGE
PENSACOLA, FL

REVISIONS
1 08/11/00

DRAWN BY: J. COTTON
CHECKED BY: L. DENTY
APPROVED BY: S. SMITH
BTA PROJECT NO. 05800.01
COKS PROJECT NO. 200749
DATE: 06/19/00

SHEET TITLE:
SECOND LEVEL PLAN

SHEET
S13

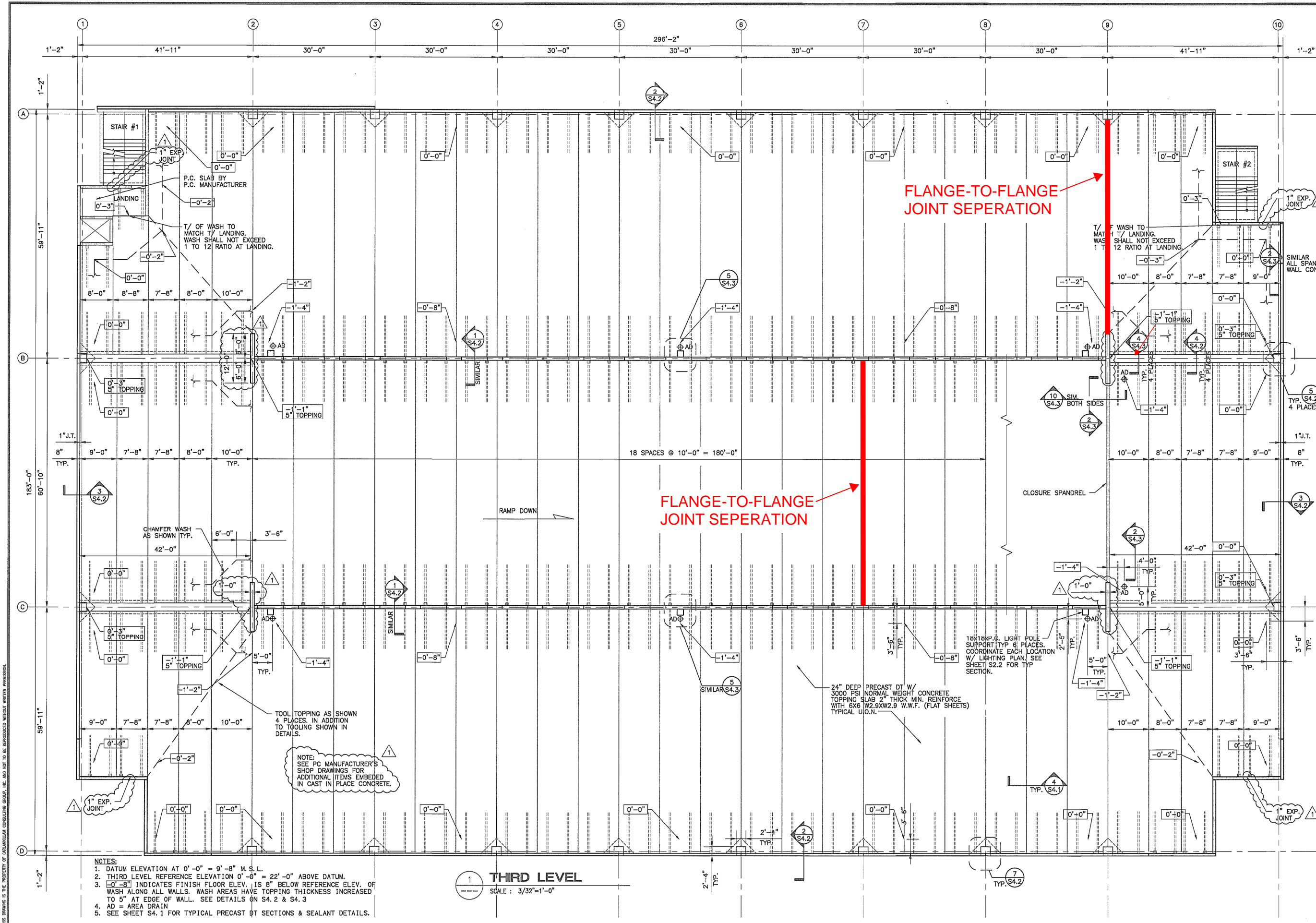
Rev 1 8/11/00

THIS DRAWING IS THE PROPERTY OF CARANIKILAM CONSULTING GROUP, INC. AND NOT TO BE REPRODUCED WITHOUT WRITTEN PERMISSION.

CUT LINE

N

↑



- NOTES:**
- DATUM ELEVATION AT 0'-0" = 9'-8" M.S.L.
 - THIRD LEVEL REFERENCE ELEVATION 0'-0" = 22'-0" ABOVE DATUM.
 - 0'-8" INDICATES FINISH FLOOR ELEV. IS 8" BELOW REFERENCE ELEV. OF WASH ALONG ALL WALLS. WASH AREAS HAVE TOPPING THICKNESS INCREASED TO 5" AT EDGE OF WALL. SEE DETAILS ON S4.2 & S4.3
 - AD = AREA DRAIN
 - SEE SHEET S4.1 FOR TYPICAL PRECAST DT SECTIONS & SEALANT DETAILS.

1 THIRD LEVEL
SCALE : 3/32"=1'-0"



PLANNING
ARCHITECTURE
INTERIOR DESIGN
LENDING REPORT SERVICES
CONSTRUCTION ADMINISTRATION
AUTOMATED FACILITY INFORMATION
BUILDING DIAGNOSTIC/REMEDIATION
DESIGN/BUILD

Bullock Tice Associates
909 East Cervantes Suite B
Pensacola, FL 32501
AAC00074
www.bullocktice.com
Fax: 850.432.2208
Phone: 850.434.5444

CONSULTANTS
CARANELLAM CONSULTING
5111 N. 12TH AV. 32504
PENSACOLA, FL
(850) 484-6011

SCHMIDT DELL COOK & ASS.
139 E. GOVERNMENT ST.
PENSACOLA, FL
(850) 438-0050

**ESCAMBIA COUNTY
PARKING GARAGE
PENSACOLA, FL**

REVISIONS

1	08/11/00
---	----------

DRAWN BY: J. COTTON
CHECKED BY: L. DENTY
APPROVED BY: S. SMITH
BTA PROJECT NO: 95800.01
CK09 PROJECT NO: 200749
DATE: 06/19/00

SHEET TITLE:
THIRD LEVEL PLAN

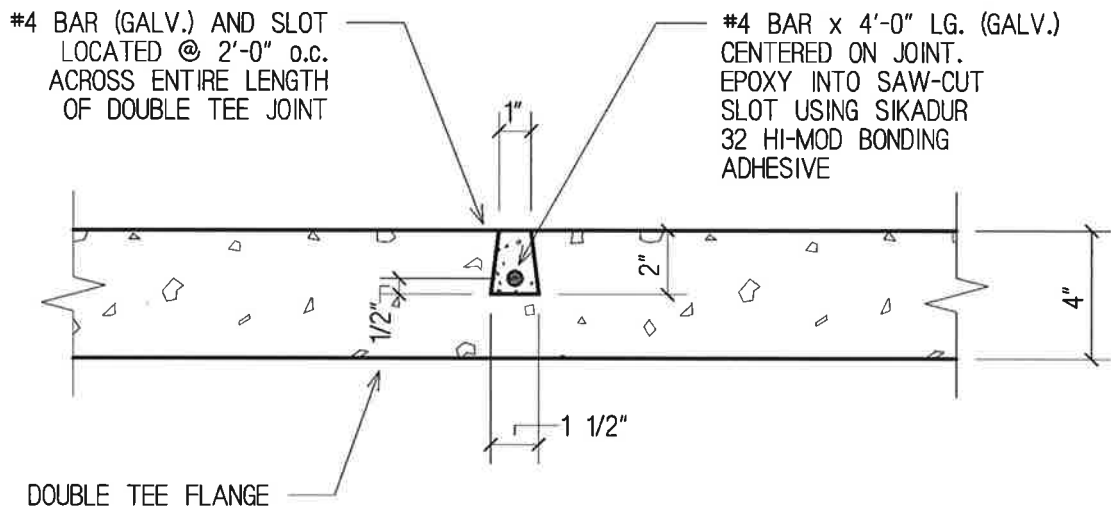
SHEET
S14

Rev 1 8/10/00

THIS DRAWING IS THE PROPERTY OF CARANELLAM CONSULTING GROUP, INC. AND NOT TO BE REPRODUCED WITHOUT WRITTEN PERMISSION.

FLANGE TO FLANGE JOINT SEPARATION REPAIR DETAIL

[NOTE: SLOT PROFILE SHOWN IS IDEAL. IT IS ALSO ACCEPTABLE TO PROVIDE VERTICAL SIDE WALL CUTS IF SKEWED CUTS ARE NOT PRACTICAL.]



FLANGE TO FLANGE REPAIR PROCEDURE:

- 1.) SAW-CUT SLOTS IN DOUBLE TEE FLANGES WITH THE PROFILE SHOWN ABOVE STARTING AT 4'-0" FROM THE ENDS OF THE DOUBLE TEES AND LOCATE @ 2'-0" o.c.
- 2.) REMOVE / BLOW OUT ALL LOOSE CONCRETE AND DUST PROVIDING A CLEAN SURFACE WITHIN THE SLOT.
- 3.) COAT THE INSIDE SURFACES OF THE SLOTS AND THE #4 BARS WITH SIKADUR 32 HI-MOD, HIGH MODULUS, HIGH STRENGTH EPOXY BONDING/GROUTING ADHESIVE PER THE MANUFACTURER'S INSTRUCTIONS FOR USE AS A BONDING ADHESIVE.
- 4.) AFTER THE REINFORCING HAS BEEN PLACED FILL THE SLOT WITH SIKADUR 32 HI-MOD MIXED WITH FINE AGGREGATE PER THE MANUFACTURER'S INSTRUCTIONS TO DEVELOP A GROUT.
- 5.) FINISH THE TOP SURFACE TO MATCH THE TOP FINISH OF THE DECK.
- 6.) EPOXY INJECT EXISTING CRACKS ADJACENT TO JOINT AS REQUIRED.