

### Sign Placement and Installation

1. Hand dig or vacuum excavate the first four feet of sign foundations.
2. Remove or cut vegetation as needed to provide adequate sight distance for all overhead and ground mounted signs. Vegetation removal and trimming is included in the unit price of the sign assembly. Do not alter vegetation without prior approval from the Engineer.

### Sign Panels /Faces

3. Use countersunk screws when using mechanical fasteners to attach sign panels to windbeams, brackets and splice plates for single and multi-post signs.
4. Patch attachment hardware, such as countersunk screws or rivet heads, with retroreflective buttons that match the color and sheeting material of the finished sign panel including the background, legend or border.
5. Ensure the outside corner of sign is concentric with border. Ensure white borders are designed and fabricated to be parallel to the edge of the sign. Ensure black borders are recessed from the edge of the sign.
6. Download the SunPass logo in Microstation format for use in sign fabrication from the Florida's Turnpike Traffic Design website: <http://design.floridasturnpike.com/> or obtain the logo by contacting the Turnpike Traffic Design Engineer at (407) 264-3418. The logo shall not be fabricated by hand cut-out method.
7. All signs shall be ASTM D4956-09 Type -XI retroreflective sheeting material.

## Overlays

8. When using an aluminum sheet overlay, ensure the overlay is a minimum of 0.04 inches thick. Determine the sheeting material of the existing sign and ensure the overlay sheeting type matches the existing sign.
9. When using an adhesive overlay, ensure the overlay is a removable opaque film that adheres to the sign. Ensure the sign face is clean and in good condition. Ensure the removal of the adhesive film does not damage the sign. The use of adhesive overlays is limited to 6 months or less.
10. Where panel overlays are specified, determine and match existing corner radii. Remove all existing overlays prior to proposed overlay installation. The cost is considered incidental and is to be included in the pay item for proposed overlay.
11. For partial panel overlays, ensure all existing copy to be overlaid is completely covered. Ensure the overlay does not cover any portion of the existing copy or border which is to remain visible.

### Sign Panel Replacement

12. As part of sign panel replacements, include new vertical hanger beams, new horizontal wind beams, new bolts, new screws, new nuts, new washers, and all necessary hardware for a complete connection between the new sign panel and the existing sign structure.

Sign Luminaires

13. Energize sign luminaires within 24 hours of overhead lighted sign installation.

### *Pavement Marking and Reflective Pavement Markers*

14. Ensure that proposed pavement markings at all existing or proposed interface locations match the existing pavement markings in terms of alignment. Any conflicting pavement markings shall be removed.
15. Work that includes extending or refurbishing of existing striping damaged during construction is included in the unit price of the pavement marking.
16. Pavement markings may be adjusted slightly as directed by the Engineer.
17. Lay out permanent final striping that leaves no visible marks at time of final acceptance.
18. Place a green RPM 4" outside of ground in rumble strip at each whole mile marker.
19. When removing pavement messages via water blasting, the entire area within the pavement message, including the interior of the message that is not painted or have thermoplastic, shall be water blasted so that the message outline is completely obliterated and drivers are not able to read or see the scar outlining the former message.

### Service Plaza Logo Signs

20. At least 30 calendar days prior to any conflicts between anticipated construction work and the Turnpike Service Plaza signs, coordinate with Concessions Management by calling 407-264-3184.

General Service Florida Logo Contract Signs

21. At or in advance of interchanges, the blue specific service signs with gas, food, or lodging panels attached are owned by Florida's Turnpike Enterprise. The logo panels are the property of Florida Logos, Inc. and shall be removed from the main panels and returned to Florida logos, Inc. Florida Logos shall be notified when the blue general sign is removed or replaced by telephone at 1-888-608-0833.

### Sponsor a Highway

22. All work associated with removing, storing, or relocating the Sponsor a Highway signs is the responsibility of Travelers Marketing. At least 30 calendar days prior to any conflicts between anticipated construction work and the Sponsor a Highway signs, coordinate with Travelers Marketing by telephone at (781) 416-5000 or (407) 456-1917.

DATE\$	REVISIONS						<div>STATE OF FLORIDA</div> <div>DEPARTMENT OF TRANSPORTATION</div> <div>ROAD NO. COUNTY FINANCIAL PROJECT ID</div>	<div>PLAN NOTES</div>	SHEET NO.
	DATE	BY	DESCRIPTION	DATE	BY	DESCRIPTION			

*Notes to Designers (not to be included in plan set general notes sheet)*

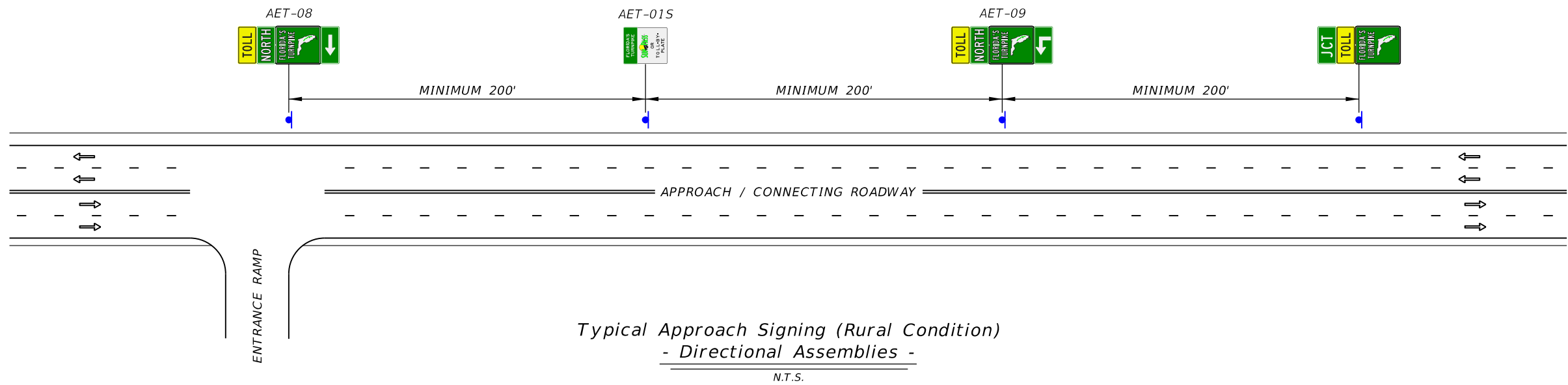
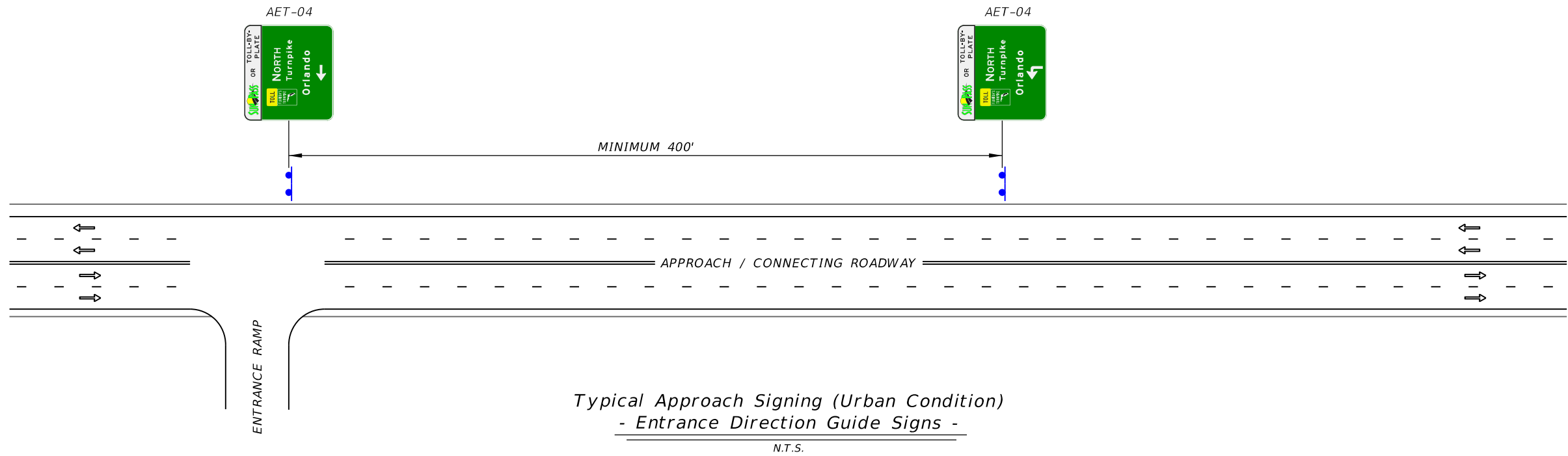
- 1. The Engineer will field verify all sign locations to ensure the sign is properly located and appropriate sign spacing is achieved.
- 2. All existing signs shall be shown on the plans. Label "existing to remain" for those that are to remain in place. All existing signs are to remain visible until such time as the proposed sign installation is completed.
- 3. Notes 3 through 8 on sheet 101-1 are in the process of being incorporated into standard specification language. Please coordinate with FTE Specifications and Traffic Design to determine if this note should be added to the plans or if specification language is available prior to plan submittal.

*Notes to Designers for Express Lanes*

- 4. Toll Amount sign structures shall be designed to accommodate three (3) destinations. The cross-section sheet should show the outline of a three (3) destination panel and the proposed panel to be installed with the project (if the proposed panel does not have three (3) destinations).
- 5. Toll amount sign closest to an ingress shall be on a span structure.
- 6. Toll Amount embedded front access DMS shall be full color, 20mm pixel pitch, be able to display seven (7) characters, and have 18" character height. Embedded DMS shall be mounted per sign manufacturer requirements.
- 7. Express Lane Status one-line front access DMS shall be full color, 20mm pixel pitch, be able to display 18 characters per line, and have 18" character height.
- 8. The express lane signs shall be overhead and over the corresponding lanes. The Advance Signing Layout diagrams are a guide for placement. Sign structures can be located on either side of the road or on a span. Roadway conditions determine the type of structure.
- 9. For direct connect access into the express lanes, the sequence can be adjusted to have one (1) toll amount sign, with a lane status DMS. The lane status DMS will serve as a backup for the provided toll amount. This DMS shall have separate power and separate communication.
- 10. For more than one (1) Express Lane, guide signs shall read EXPRESS LANES.

\$DATE\$

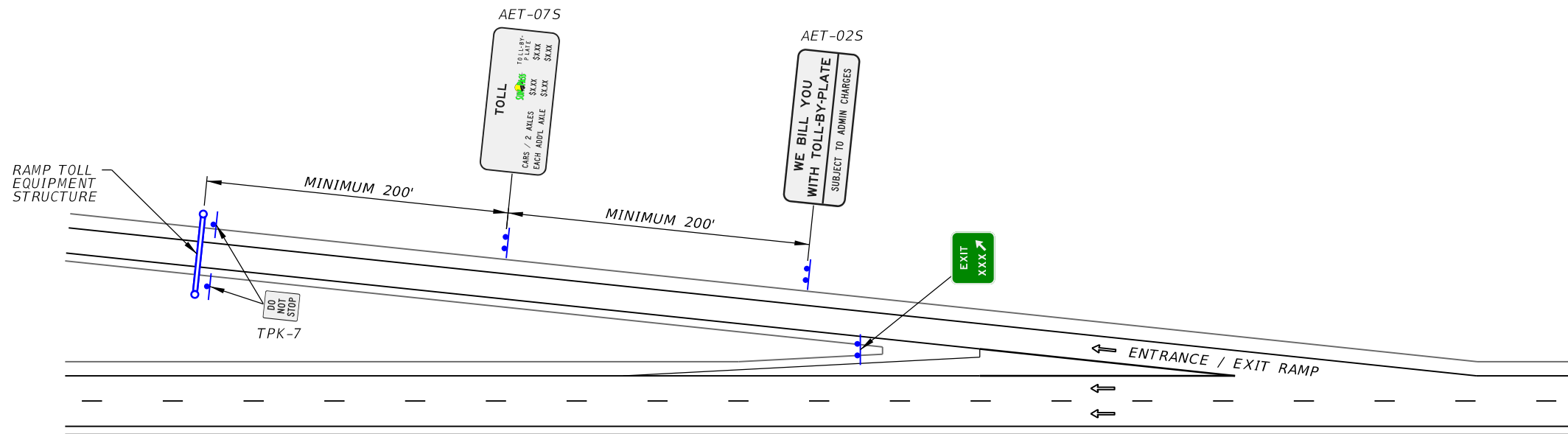
REVISIONS							STATE OF FLORIDA DEPARTMENT OF TRANSPORTATION			NOTES TO DESIGNERS	SHEET NO.
DATE	BY	DESCRIPTION	DATE	BY	DESCRIPTION		ROAD NO.	COUNTY	FINANCIAL PROJECT ID		101-2



- NOTES:
- 1. MINIMUM SPACING DISTANCES FOR SIGNS TO CONFORM TO THE TRAFFIC ENGINEERING MANUAL, AND F.A.C. RULE CHAPTER 14-51, TABLE 1.
  - 2. LEGENDS/MESSAGES SHOWN ON SIGNS AET-04 ARE PROVIDED AS AN EXAMPLE ONLY. ACTUAL DESIGNS SHALL BE SHOWN IN THE PLANS.

\$DATE\$

REVISIONS							STATE OF FLORIDA DEPARTMENT OF TRANSPORTATION			ALL ELECTRONIC TOLLING CONNECTING ROADWAYS TYPICAL SIGNING LAYOUT		SHEET NO.
DATE	BY	DESCRIPTION	DATE	BY	DESCRIPTION		ROAD NO.	COUNTY	FINANCIAL PROJECT ID			102-1



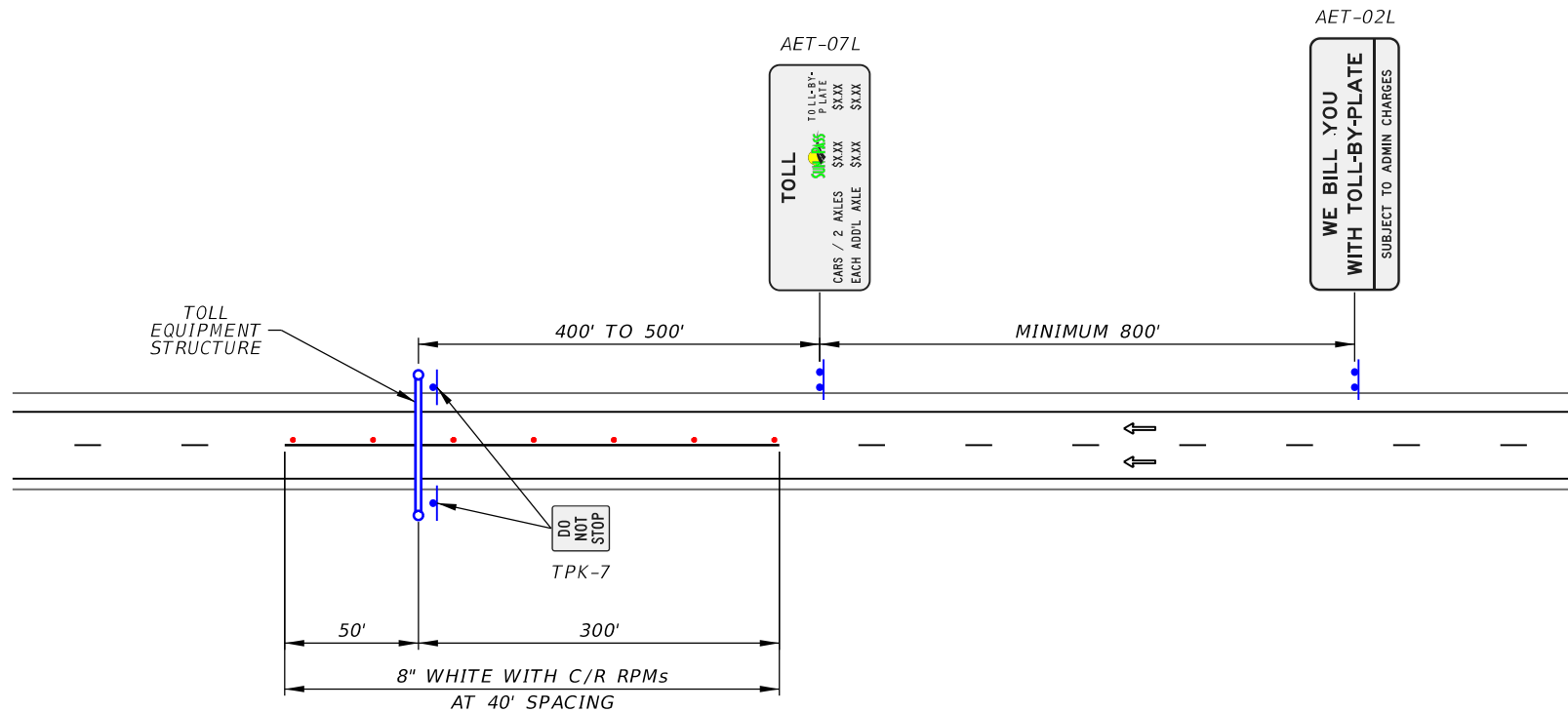
Typical Entrance / Exit Ramp Signing  
With Toll Equipment Structure

N.T.S.

NOTES:

1. MINIMUM SPACING DISTANCES FOR SIGNS SHALL CONFORM TO THE TRAFFIC ENGINEERING MANUAL AND F.A.C. RULE CHAPTER 14-51, TABLE 1.
2. TWO TPK-7 (DO NOT STOP) SIGNS ARE REQUIRED PER DIRECTION OF TRAVEL.
3. PLACEMENT OF AET-07S AND AET-02S SIGNS MAY BE BEFORE OR AFTER THE GANTRY, IF FIELD CONSTRAINTS WARRANT IT.

REVISIONS						STATE OF FLORIDA DEPARTMENT OF TRANSPORTATION	ALL ELECTRONIC TOLLING ENTRANCE/EXIT RAMP TYPICAL SIGNING LAYOUT			SHEET NO.  102-2
DATE	BY	DESCRIPTION	DATE	BY	DESCRIPTION					
						ROAD NO.	COUNTY	FINANCIAL PROJECT ID		



Mainline Toll Equipment Structure  
N.T.S.

NOTES:

1. MINIMUM SPACING DISTANCES FOR SIGNS SHALL CONFORM TO THE TRAFFIC ENGINEERING MANUAL AND F.A.C. RULE CHAPTER 14-51, TABLE 1.
2. TWO TPK-7 (DO NOT STOP) SIGNS ARE REQUIRED PER DIRECTION OF TRAVEL.
3. PLACEMENT OF AET-07L AND AET-02L SIGNS MAY BE BEFORE OR AFTER THE GANTRY, IF FIELD CONSTRAINTS WARRANT IT.

\$DATE\$

REVISIONS						STATE OF FLORIDA DEPARTMENT OF TRANSPORTATION			ALL ELECTRONIC TOLLING MAINLINE TOLL TYPICAL SIGNING LAYOUT	SHEET NO.
DATE	BY	DESCRIPTION	DATE	BY	DESCRIPTION					
						ROAD NO.	COUNTY	FINANCIAL PROJECT ID		102-3



\$DATES

SIGN NAME	AET-04 (Top Panel)		SIGN NUMBER	STATION(S)		
PANEL	BORDER			none		
WIDTH	14'-6"	WIDTH	2"			
HEIGHT	2'-8"	RADII	12"			
LEGEND	Black	COLOR	Black			
COLOR	White					
SYMBOL(S)	ANGLE	X	Y	WID	HT	
SP_LOGO	0	10.5	5	58.7	22	

SIGN NUMBER	NUMBER OF POSTS	CLEARANCE Edge Of Lane	COLUMN SIZE		AVERAGE LENGTH

NOTES:

1. FOR WIDER WIDTHS, LEFT & RIGHT MARGIN SHOULD MATCH INTERWORD SPACING.  
2. SIDE STREET APPLICATIONS.

NO. OF LIGHT FIXTURES	FIXTURE SPACING	PHOTOMETRIC CURVE	WATT	VOLTAGE
-----------------------	-----------------	-------------------	------	---------

COPY		T	O	L	L	-	B	Y	-	L										
SPACE	104.8	8	10	8.5	7	5.1	8.1	9.2	2.8	10.5	58.7									
COPY		O	R		L															
SPACE	79.5	8.6	6.5	79.4	15.1															
COPY		P	L	A	T	E		L												
SPACE	113.7	9.3	7.3	9.5	8.8	6	19.4	40.9												
COPY																				
SPACE																				
COPY																				
SPACE																				
COPY																				
SPACE																				

SIGN NAME	AET-04	QTY	I	SIGN NUMBER	STATION(S)		
PANEL	BORDER						
WIDTH	14'-6"	WIDTH	2"				
HEIGHT	13'-6"	RADII	12"				
LEGEND	White	COLOR	White				
COLOR	Green						
SYMBOL(S)	ANGLE	X	Y	WID	HT		
SP_LOGO	0	10.5	135	58.7	22		
M4-I5_TPK	0	27.4	102	30	18		
TP_SM	0	27.4	66	30	36		
ARMED	0	72.6	13.1	18.3	28.7		
SIGN NUMBER	NUMBER OF POSTS	CLEARANCE Edge Of Lane	COLUMN SIZE		AVERAGE LENGTH		

NO. OF LIGHT FIXTURES	FIXTURE SPACING	PHOTOMETRIC CURVE	WATT	VOLTAGE
-----------------------	-----------------	-------------------	------	---------

COPY		T	O	L	L	-	B	Y	-	L										
SPACE	104.8	8	10	8.5	7	5.1	8.1	9.2	2.8	10.5	58.7									
COPY		O	R		L															
SPACE	79.5	8.6	6.5	79.4	15.1															
COPY		P	L	A	T	E		L												
SPACE	113.7	9.3	7.3	9.5	8.8	6	19.4	40.9												
COPY		N		O	R	T	H		L											
SPACE	72.4	12.2	2.8	12.8	11	11	9.7	42.1	59.5											
COPY		T	u	r	n	p	i	k	e	L										
SPACE	72.4	10.5	11.3	7.9	11.3	10.3	6.4	9.4	7	27.5	74.1									
COPY		O	r	I	a	n	d	o		L										
SPACE	46.7	15.2	9.8	6.8	14.1	12.9	12.9	9	46.6	80.7										

SIGN NAME	AET-06 (Top Panel)		SIGN NUMBER	STATION(S)		
PANEL	BORDER			none		
WIDTH	17'-0"	WIDTH	2"			
HEIGHT	3'-0"	RADII	12"			
LEGEND	Black	COLOR	Black			
COLOR	White					
SYMBOL(S)	ANGLE	X	Y	WID	HT	
SP_LOGO	0	10	4	74.7	28	

SIGN NUMBER	NUMBER OF POSTS	CLEARANCE Edge Of Lane	COLUMN SIZE		AVERAGE LENGTH

NOTES:

1. FOR WIDER WIDTHS, LEFT & RIGHT MARGIN SHOULD MATCH INTERWORD SPACING.  
2. MAINLINE APPLICATIONS.  
3. THE SPACE BETWEEN THE SUNPASS LOGO, THE WORD "OR" AND "TOLL-BY-PLATE" SHOULD NOT BE GREATER THAN 24".

NO. OF LIGHT FIXTURES	FIXTURE SPACING	PHOTOMETRIC CURVE	WATT	VOLTAGE
-----------------------	-----------------	-------------------	------	---------

COPY		T	O	L	L	-	B	Y	-	L										
SPACE	119.3	10.2	12.9	10.8	8.9	6.6	10.2	11.6	3.5	10	74.7									
COPY		O	R		L															
SPACE	92.6	10.7	8.1	92.6	18.8															
COPY		P	L	A	T	E		L												
SPACE	130.6	11.9	9.3	12	11.3	7.5	21.4	52												
COPY																				
SPACE																				
COPY																				
SPACE																				
COPY																				
SPACE																				

SIGN NAME	AET-06	QTY	I	SIGN NUMBER	STATION(S)		
PANEL	BORDER						
WIDTH	17'-0"	WIDTH	2"				
HEIGHT	15'-0"	RADII	12"				
LEGEND	White	COLOR	White				
COLOR	Green						
SYMBOL(S)	ANGLE	X	Y	WID	HT		
SP_LOGO	0	10	148	74.7	28		
TP_MD	0	37	66.1	40	48		
M4-I5_TPK	0	37	114.1	40	18		
SIGN NUMBER	NUMBER OF POSTS	CLEARANCE Edge Of Lane	COLUMN SIZE		AVERAGE LENGTH		

NO. OF LIGHT FIXTURES	FIXTURE SPACING	PHOTOMETRIC CURVE	WATT	VOLTAGE
-----------------------	-----------------	-------------------	------	---------

COPY		T	O	L	L	-	B	Y	-		L												
SPACE	119.3	10.2	12.9	10.8	8.9	6.6	10.2	11.6	3.5	10	74.7												
COPY		O	R		L																		
SPACE	92.6	10.7	8.1	92.6	18.8																		
COPY		P	L	A	T	E		L															
SPACE	130.6	11.9	9.3	12	11.3	7.5	21.4	52															
COPY		S		O	U	T	H		L														
SPACE	92	12.1	2.8	12.8	11.8	11	9.7	51.8	60.2														
COPY		T	u	r	n	p	i	k	e		L												
SPACE	92	10.5	11.3	7.9	11.3	10.3	6.4	9.4	7	37.9	74.1												
COPY		H	o	m	e	s	t	e	a	d		L				1		M	I	L			
SPACE	34.4	17	15.8	22.6	13.8	13.9	12	14.1	15.5	10.6	34.3	135.3			75.7	4.5	15	12	4.4	9.2	7.5	75.7	52.6

REVISIONS

DATE	BY	DESCRIPTION	DATE	BY	DESCRIPTION

STATE OF FLORIDA  
DEPARTMENT OF TRANSPORTATION

ROAD NO.	COUNTY	FINANCIAL PROJECT ID

ALL ELECTRONIC TOLLING  
TOLL-BY-PLATE  
SIGN PANELS

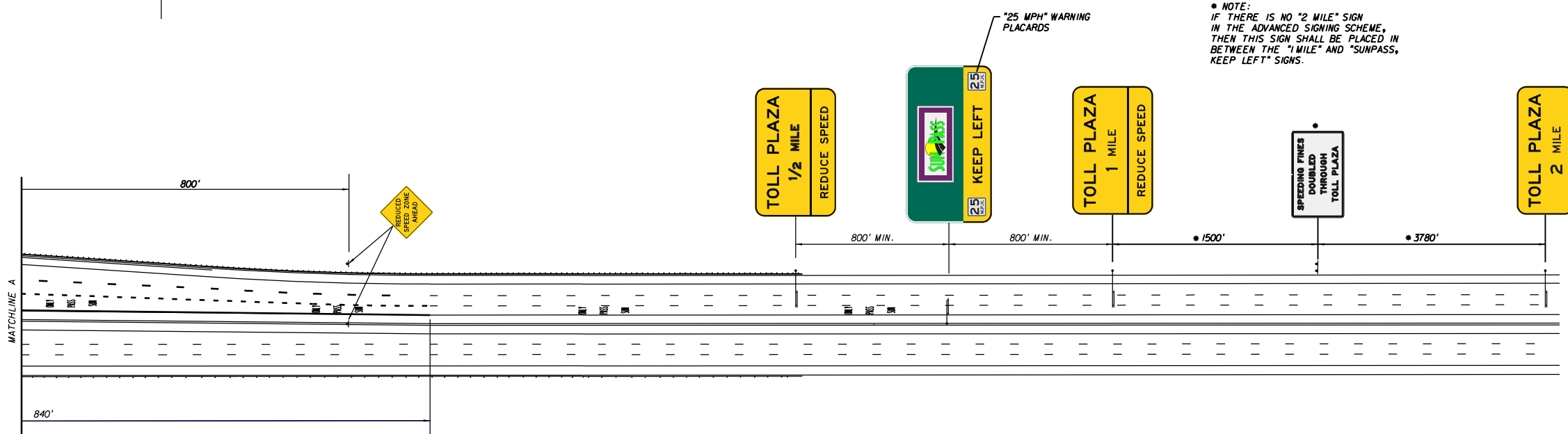
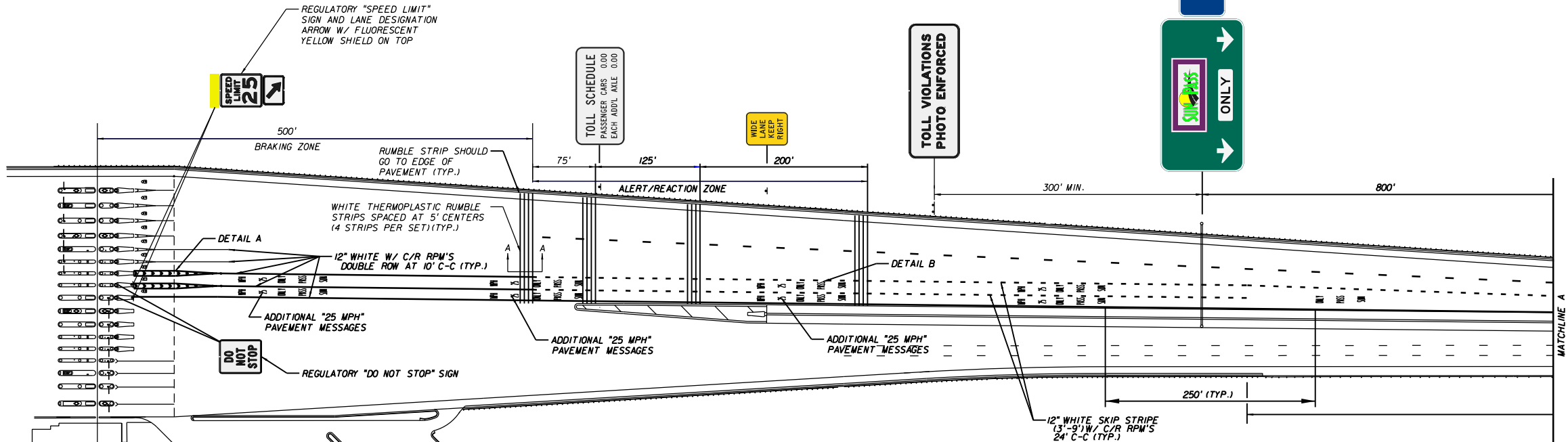
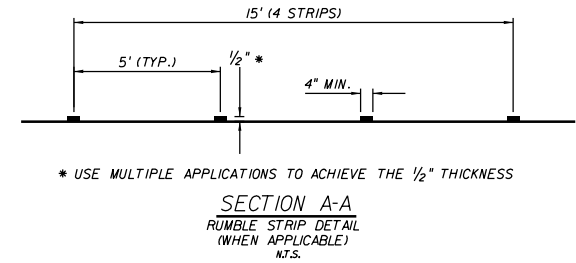
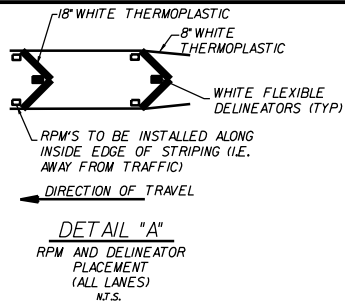
SHEET NO.

103-2





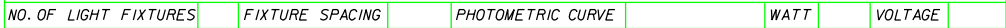




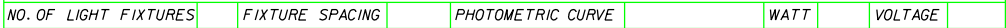
- MAIN LINE PLAZA NOTES:**
- ALL RPM'S SHALL BE PLACED ON THE ISLAND SIDE OF THE ADJACENT EDGELINES.
  - PAVEMENT MARKINGS MAY BE ADJUSTED SLIGHTLY AS DIRECTED BY THE ENGINEER.
  - FLEXIBLE DELINEATORS SHALL BE 48" HIGH AND WHITE WITH A 3" X 12" REFLECTIVE STRIP. THE DELINEATOR SHALL BE SURFACE MOUNTED ON EXISTING PAVEMENT.

REVISIONS						STATE OF FLORIDA DEPARTMENT OF TRANSPORTATION			DUAL DEDICATED MAINLINE TOLL PLAZA SIGNING AND PAVEMENT MARKING LAYOUT	SHEET NO.  104-1
DATE	BY	DESCRIPTION	DATE	BY	DESCRIPTION	ROAD NO.	COUNTY	FINANCIAL PROJECT ID		

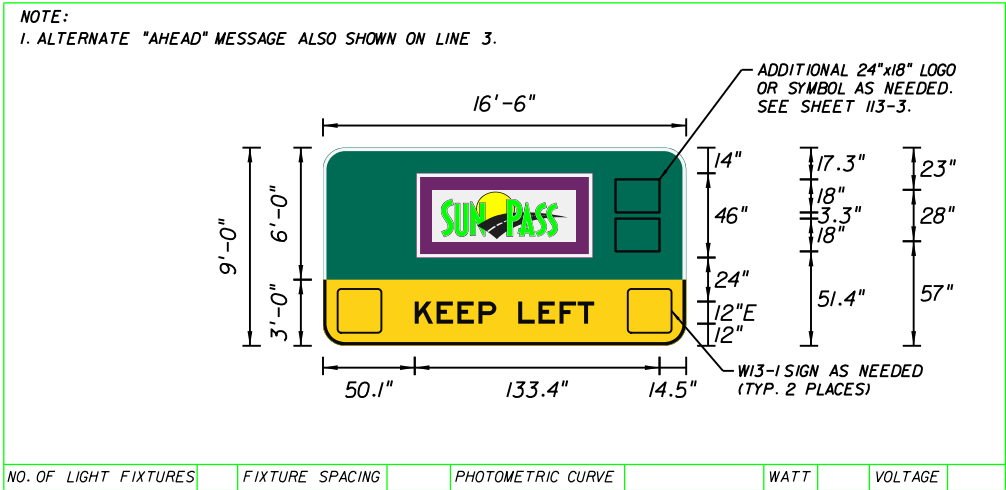
COPY		O	N	L	Y	
SPACE	75.1	12.8	12.8	10	12.2	75.1
COPY						
SPACE						
COPY						
SPACE						
COPY						
SPACE						
COPY						
SPACE						
COPY						
SPACE						



COPY		E	X	A	C	T
SPACE	17.5	13.4	14.7	17.4	14.3	11.3
COPY		C	A	R	S	
SPACE	26.3	14.3	17.8	14.3	12.2	15
COPY						
SPACE						
COPY						
SPACE						
COPY						
SPACE						
COPY						
SPACE						



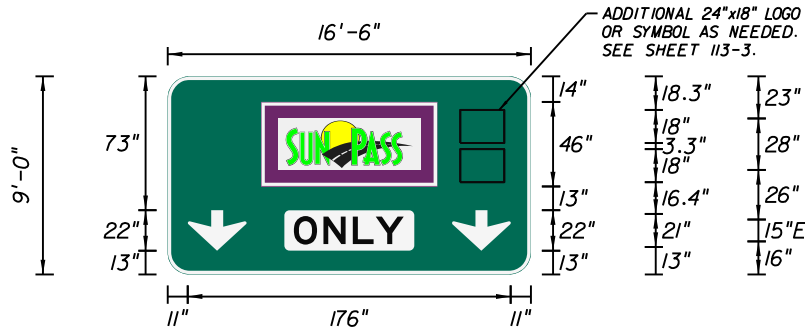
COPY		K	E	E	P	
SPACE	50.1	11.9	11.4	11.4	9.7	12
COPY						
SPACE						
COPY		A	H	E	A	D
SPACE	68.3	14.3	12.8	10.3	14.3	9.7
COPY						
SPACE						
COPY						
SPACE						
COPY						
SPACE						



--

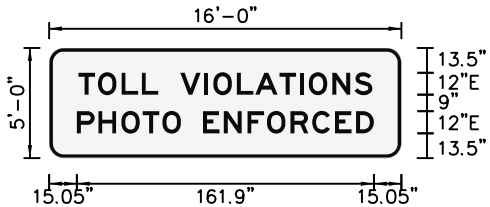
## TOLL PLAZA SIGNING DETAILS MAINLINE APPROACH SIGN PANELS

SIGN NAME	TPK-AS3	QTY	I	SIGN NUMBER	STATION(S)
PANEL	BORDER				
WIDTH	16'-6"	WIDTH	2"		
HEIGHT	9'-0"	RADII	12"		
LEGEND	White	COLOR	White		
COLOR	Green				
SYMBOL(S)	ANGLE	X	Y	WID	HT
OtherETC	0	159.5	71.7	24	18
SunPassLarge	0	60	57	78	28
OtherETC	0	159.5	50.3	24	18
LogoPanelLarge	0	51	48	96	46
ARDOWN	0	11	13	32	22
ARDOWN	0	155	13	32	22
SIGN NUMBER	NUMBER OF POSTS	CLEARANCE Edge Of Lane	COLUMN SIZE	AVERAGE LENGTH	



NO. OF LIGHT FIXTURES	FIXTURE SPACING	PHOTOMETRIC CURVE	WATT	VOLTAGE
-----------------------	-----------------	-------------------	------	---------

SIGN NAME	TPK-VI	QTY	I	SIGN NUMBER	STATION(S)
PANEL	BORDER				
WIDTH	16'-0"	WIDTH	2"		
HEIGHT	5'-0"	RADII	8"		
LEGEND	Black	COLOR	Black		
COLOR	White				
SYMBOL(S)	ANGLE	X	Y	WID	HT
SIGN NUMBER	CLEARANCE Edge Of Lane	COLUMN SIZE	AVERAGE LENGTH		

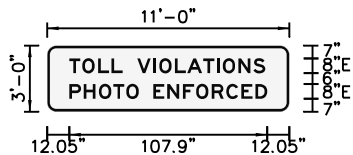


NO. OF LIGHT FIXTURES	FIXTURE SPACING	PHOTOMETRIC CURVE	WATT	VOLTAGE
-----------------------	-----------------	-------------------	------	---------

MAINLINE APPLICATION

COPY		T	O	L	L		V	I	O	L	A	T	I	O	N	S		L						
SPACE	75.1	12.8	12.8	10	12.2	75.1	47.9										15.9	160.2						
COPY		P	H	O	T	O		E	N	F	O	R	C	E	D		L							
SPACE	15.1	11.8	12.5	11.8	10.7	10.1	12	11.4	12.8	10.7	12.8	11.8	12.5	11.4	9.7	15.1	161.9							
COPY																								
SPACE																								
COPY																								
SPACE																								
COPY																								
SPACE																								
COPY																								
SPACE																								
COPY																								
SPACE																								

SIGN NAME	TPK-V2	QTY	I	SIGN NUMBER	STATION(S)
PANEL	BORDER				
WIDTH	11'-0"	WIDTH	1.5"		
HEIGHT	3'-0"	RADII	5"		
LEGEND	Black	COLOR	Black		
COLOR	White				
SYMBOL(S)	ANGLE	X	Y	WID	HT
SIGN NUMBER	CLEARANCE Edge Of Lane	COLUMN SIZE	AVERAGE LENGTH		

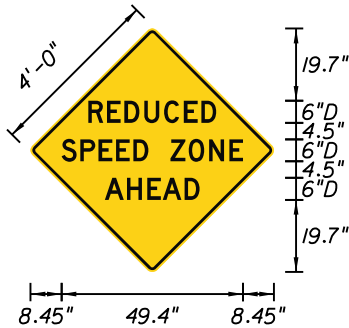


NO. OF LIGHT FIXTURES	FIXTURE SPACING	PHOTOMETRIC CURVE	WATT	VOLTAGE
-----------------------	-----------------	-------------------	------	---------

RAMP APPLICATION

COPY		T	O	L	L		V	I	O	L	A	T	I	O	N	S		L						
SPACE	12.6	7.1	8.6	7.4	6	8	8.7	3.3	8.6	6.6	8.8	7.4	3.3	8.6	8.1	6.5	12.6	106.8						
COPY		P	H	O	T	O		E	N	F	O	R	C	E	D		L							
SPACE	12	7.8	8.3	7.8	7.1	6.7	8	7.6	8.6	7.1	8.6	7.8	8.3	7.6	6.5	12	107.9							
COPY																								
SPACE																								
COPY																								
SPACE																								
COPY																								
SPACE																								
COPY																								
SPACE																								

SIGN NAME	TPK-RSZ	QTY	I	SIGN NUMBER	STATION(S)
PANEL	BORDER				
WIDTH	5'-6"	WIDTH	0"		
HEIGHT	5'-6"	RADII	0"		
LEGEND	Black	COLOR	Black		
COLOR	Yellow				
SYMBOL(S)	ANGLE	X	Y	WID	HT
SIGN NUMBER	NUMBER OF POSTS	CLEARANCE Edge Of Lane	COLUMN SIZE	AVERAGE LENGTH	



NO. OF LIGHT FIXTURES	FIXTURE SPACING	PHOTOMETRIC CURVE	WATT	VOLTAGE
-----------------------	-----------------	-------------------	------	---------

COPY		R	E	D	U	C	E	D		L														
SPACE	15.7	5.1	4.7	5.4	5.4	5.4	4.7	4.1	15.7	34.9														
COPY		S	P	E	E	D		Z	O	N	E		L											
SPACE	8.4	5.1	5	4.7	4.7	4.1	6	5	5.6	5.5	3.7	8.4	49.4											
COPY		A	H	E	A	D		L																
SPACE	20.3	6	5.5	4.2	6	4.1	20.3	25.8																
COPY																								
SPACE																								
COPY																								
SPACE																								
COPY																								
SPACE																								



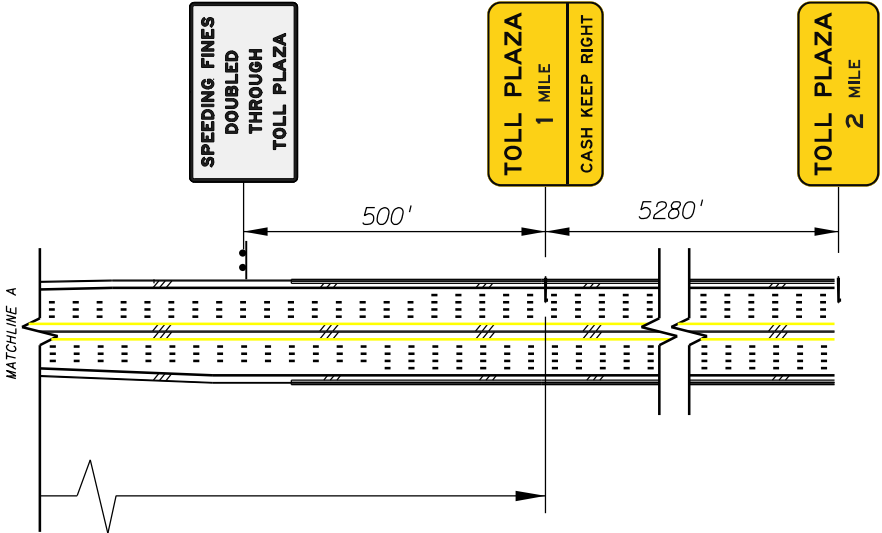
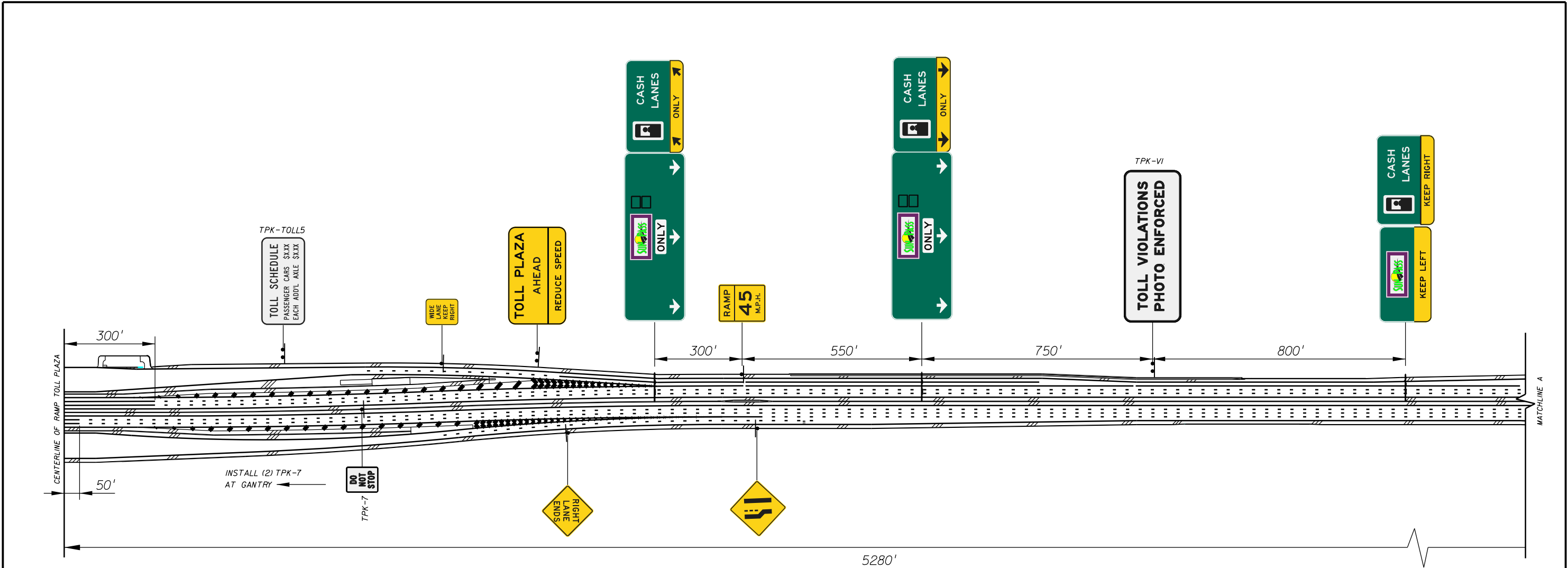
[illegible]









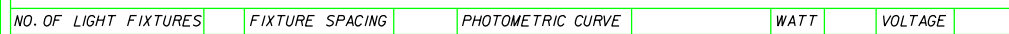
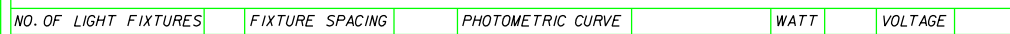


REVISIONS						STATE OF FLORIDA DEPARTMENT OF TRANSPORTATION			ORT MAINLINE TOLL PLAZA SIGNING LAYOUT		SHEET NO.	
DATE	BY	DESCRIPTION	DATE	BY	DESCRIPTION							
											105-1	

\$ DATES

N.T.S.



[illegible][illegible]

**ORT SIGNING DETAILS  
MAINLINE  
SIGN PANELS**

TOLL BOOTH SYMBOL  
SEE SHEET 112-3

14'-0"

6'-0"

12"

48"

12"

14"

140"

14"

19.5"

12"E

9"

12"E

19.5"

CHANGE  
PROVIDED

[illegible]

The diagram shows a rectangular toll booth sign with a green background. It features a white rectangular area on the left containing a black silhouette of a person. To the right of this is a logo with the text "SUN PASS" in green, with a yellow sun and a black road graphic. Below the logo, the text "CHANGE PROVIDED" is written in white. The sign has a white border. Dimensions are provided for the sign and its mounting. Callouts point to specific features: "TOLL BOOTH SYMBOL SEE SHEET 113-3" points to the person silhouette; "14'-0\" points to the overall width; "5.4\" points to the top mounting offset; "28\" points to the top mounting offset; "10.3\" points to the top mounting offset; "18\" points to the top mounting offset; "6\" points to the top mounting offset; "10\"E\" points to the top mounting offset; "10\"E\" points to the top mounting offset; "6.6\" points to the top mounting offset; "43.7\" points to the top mounting offset; "141\" points to the overall width; "15\" points to the right mounting offset; "6'-0\" points to the overall height; "12\" points to the left mounting offset; "48\" points to the left mounting offset; "12\" points to the left mounting offset.

TOLL BOOTH SYMBOL  
SEE SHEET 113-3

14'-0"

5.4"

28"

10.3"

18"

6"

10"E

10"E

6.6"

43.7"

141"

15"

6'-0"

12"

48"

12"

CHANGE PROVIDED

ADDITIONAL 24"x18" LOGO  
OR SYMBOL AS NEEDED.  
SEE SHEET 112-3.

[illegible]

REVISIONS			
	DATE	DESCRIPTION	

TOLL BOOTH SYMBOL  
SEE SHEET 112-3

14'-0"

5'-0"

6"

48"

6"

14"

140"

14"

13.5"

12"E

9"

12"E

13.5"

CHANGE  
PROVIDED

[illegible]

The diagram shows a rectangular toll booth symbol with a green background. It features a white silhouette of a person in a car on the left, a yellow sun icon in the center, and the text "CHANGE PROVIDED" in white. Dimensions are provided for the symbol and its mounting. Callouts point to specific features: "TOLL BOOTH SYMBOL SEE SHEET 113-3" points to the symbol itself; "14'-0\" points to the overall width; "5'-0\" points to the overall height; "12\" points to the width of the car silhouette; "139\" points to the width of the central area; "17\" points to the width of the right side; "6\" points to the height of the car silhouette; "48\" points to the height of the central area; "6\" points to the height of the right side; "3.3\" points to the height of the sun icon; "24\" points to the height of the text "CHANGE PROVIDED"; "3.7\" points to the height of the text "PROVIDED"; "5\" points to the height of the right side; "4\" points to the height of the right side; "7.8\" points to the height of the right side; "15\" points to the height of the right side; "37.2\" points to the height of the right side. An additional callout points to a small square on the right side of the symbol, stating "ADDITIONAL 20\"x15\" LOGO OR SYMBOL AS NEEDED. SEE SHEET 112-3."

TOLL BOOTH SYMBOL  
SEE SHEET 113-3

14'-0"

5'-0"

6"

48"

6"

12"

139"

17"

3.3"

24"

3.7"

5"

4"

7.8"

15"

37.2"

ADDITIONAL 20"x15" LOGO  
OR SYMBOL AS NEEDED.  
SEE SHEET 112-3.

CHANGE PROVIDED

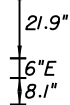
[illegible]

<b>TRANSPORTATION</b>	<b>TOLL PLAZA SIGNING DETAILS MAINLINE CANOPY MOUNTED SIGN PANELS</b>	SHEET NO.
FINANCIAL PROJECT ID		106-1



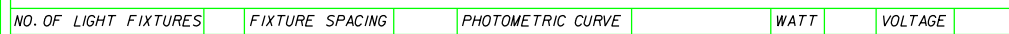
[illegible][illegible]

--	--

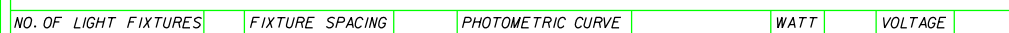
[illegible][illegible]

***TOLL PLAZA SIGNING DETAILS  
MAINLINE CANOPY MOUNTED  
SIGN PANELS***

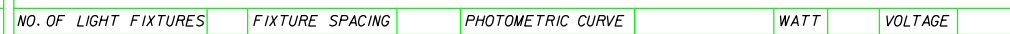
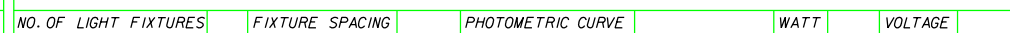
COPY		E	X	A	C	T
SPACE	21.7	8.9	9.8	11.6	9.5	7.5
COPY						
SPACE						
COPY						
SPACE						
COPY						
SPACE						
COPY						
SPACE						
COPY						
SPACE						

[illegible]

COPY		E	X	A	C	T
SPACE	21.7	8.9	9.8	11.6	9.5	7.5
COPY						
SPACE						
COPY						
SPACE						
COPY						
SPACE						
COPY						
SPACE						
COPY						
SPACE						

[illegible]

COPY		E	X	A	C	T
SPACE	21.7	8.9	9.8	11.6	9.5	7.5
COPY						
SPACE						
COPY						
SPACE						
COPY						
SPACE						
COPY						
SPACE						
COPY						
SPACE						

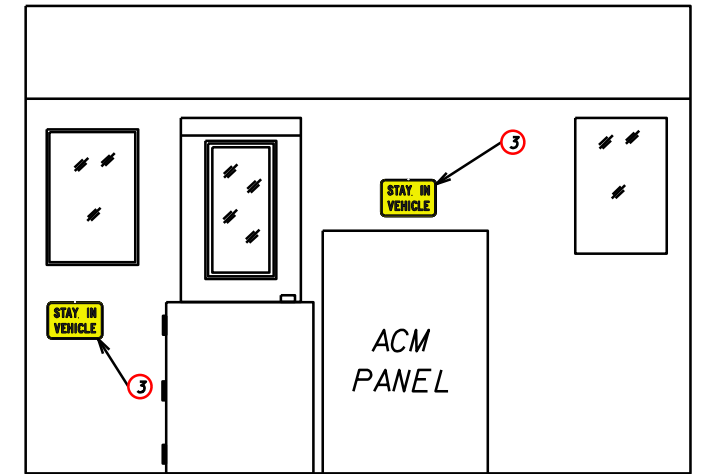
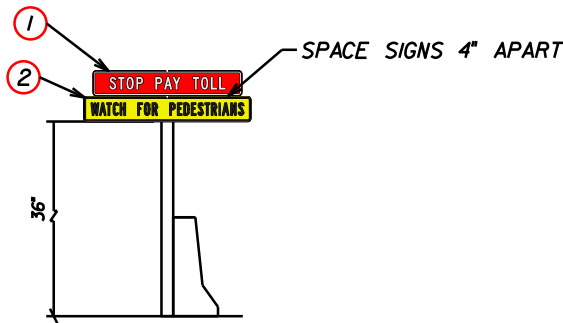
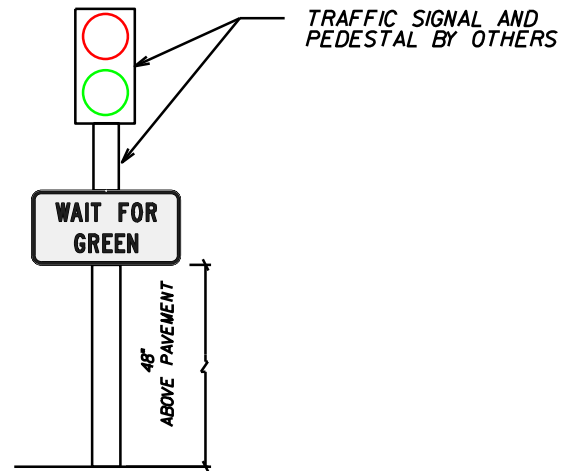
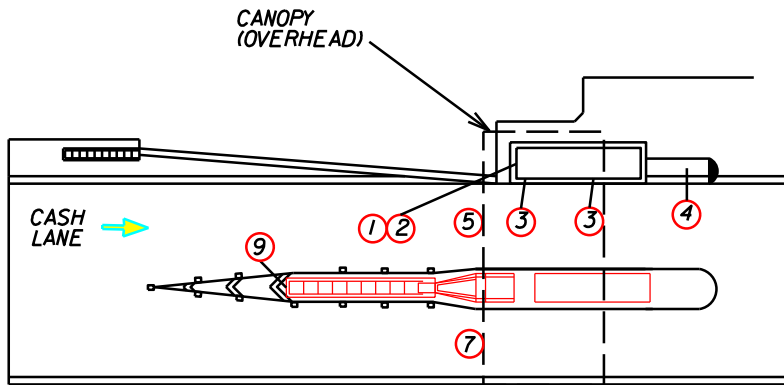
[illegible][illegible]

\$DATE\$	<i>REVISIONS</i>					<i>STATE OF FLORIDA DEPARTMENT OF TRANSPORTATION</i>			<i><b>TOLL PLAZA SIGNING DETAILS RAMP CANOPY MOUNTED SIGN PANELS</b></i>	SHEET NO.
	DATE	DESCRIPTION	DATE	DESCRIPTION		ROAD NO.	COUNTY	FINANCIAL PROJECT ID		106-4

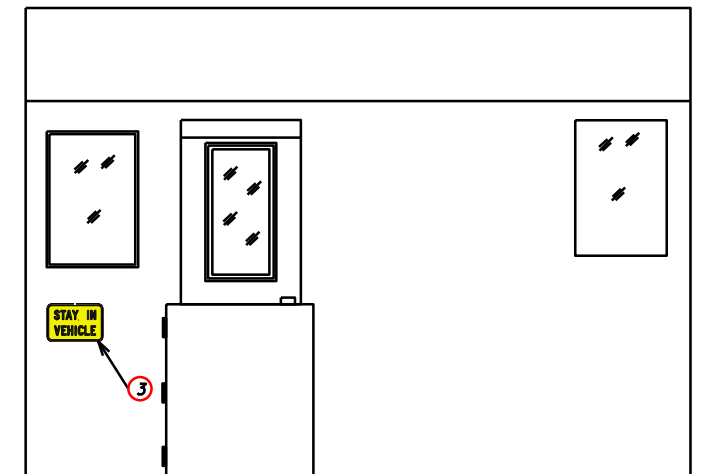








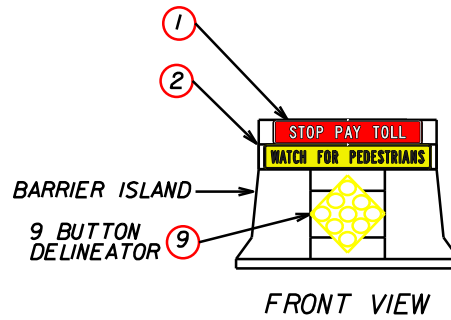
PARTIALLY STAFFED  
SIGN PLACEMENT DETAIL



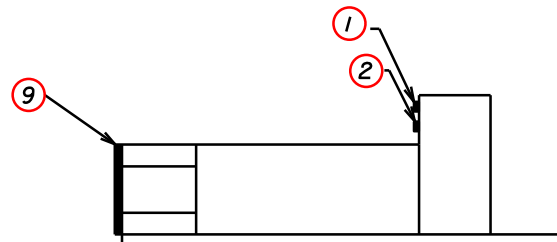
STAFFED 24 HOURS  
SIGN PLACEMENT DETAIL

## TOLL PLAZA SIGN SYMBOL LEGEND

	LEGEND OR DESCRIPTION	REMARKS
1	STOP PAY TOLL	MOUNT ON ISLAND GATORHEAD
2	WATCH FOR PEDESTRIANS	MOUNT ON ISLAND GATORHEAD
3	STAY IN VEHICLE	MOUNT ON TOLL BOOTH OR ACM
4*	WAIT FOR GREEN	MOUNT ON TOLL BOOTH
5	LANE DESIGNATION SIGN	MOUNT ON CANOPY
7	LANE DESIGNATION SIGN	MOUNT ON CANOPY
9	9 BUTTON DELINEATOR	MOUNT ON BLUNT END OF CONCRETE ISLAND AND ATTENUATOR



FRONT VIEW



SIDE VIEW

N.T.S.

\$DATE\$

REVISIONS					
DATE	BY	DESCRIPTION	DATE	BY	DESCRIPTION

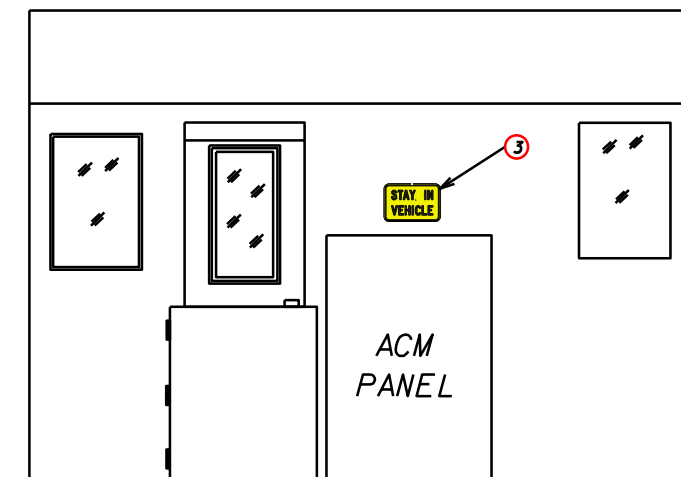
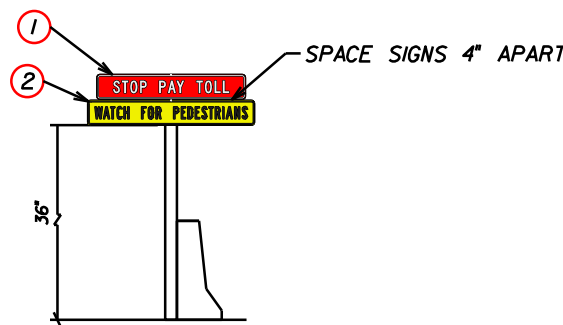
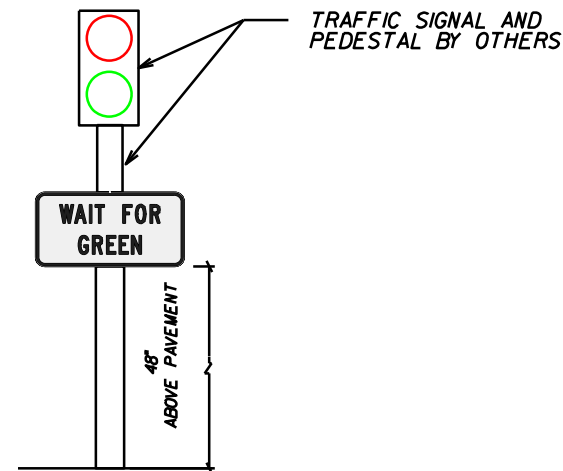
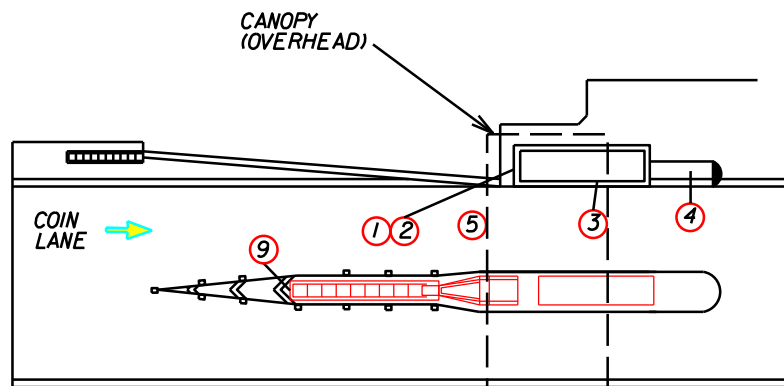
STATE OF FLORIDA  
DEPARTMENT OF TRANSPORTATION

ROAD NO. COUNTY FINANCIAL PROJECT ID

CASH LANE  
TOLL PLAZA  
SIGNING LAYOUT

SHEET  
NO.

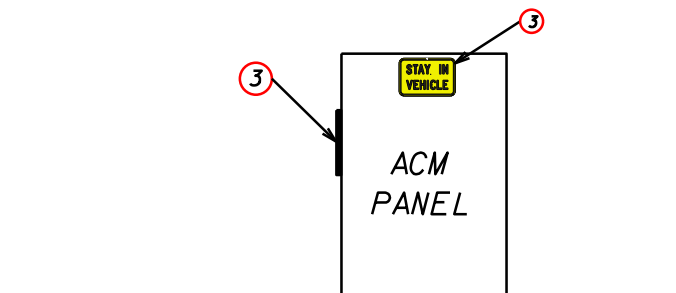
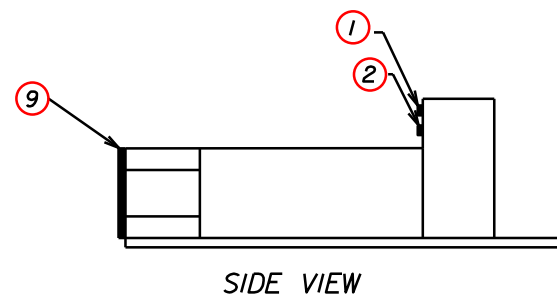
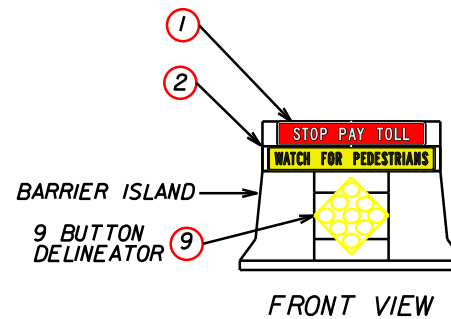
107-1



UNSTAFFED COIN LANE  
SIGN PLACEMENT DETAIL

## TOLL PLAZA SIGN SYMBOL LEGEND

	LEGEND OR DESCRIPTION	REMARKS
1	STOP PAY TOLL	MOUNT ON ISLAND GATORHEAD
2	WATCH FOR PEDESTRIANS	MOUNT ON ISLAND GATORHEAD
3	STAY IN VEHICLE	MOUNT ON TOLL BOOTH OR ACM
4*	WAIT FOR GREEN	MOUNT ON TOLL BOOTH
5	LANE DESIGNATION SIGN	MOUNT ON CANOPY
9	9 BUTTON DELINEATOR	MOUNT ON BLUNT END OF CONCRETE ISLAND AND ATTENUATOR

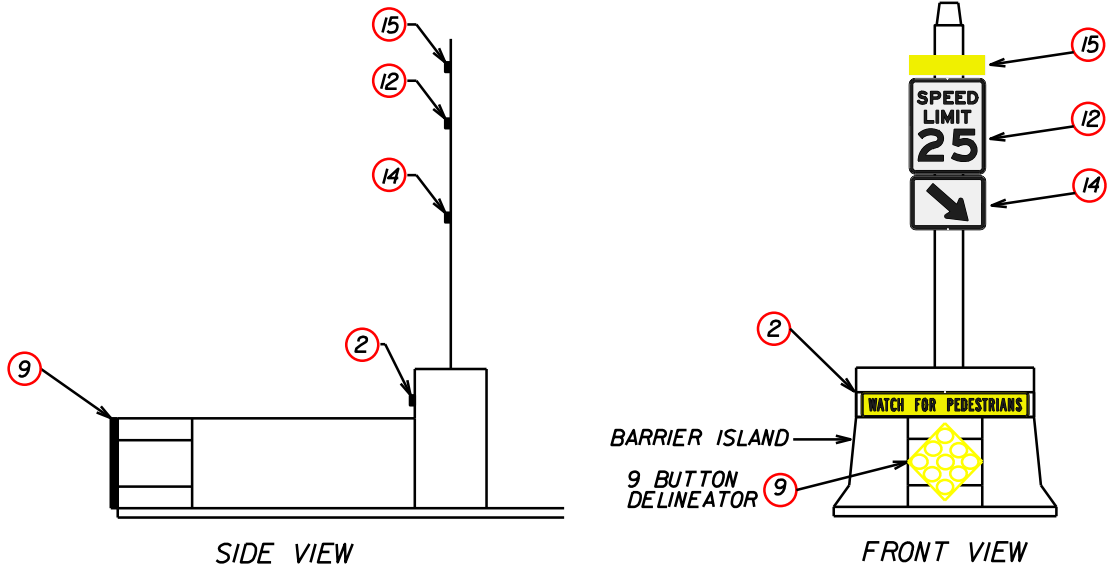
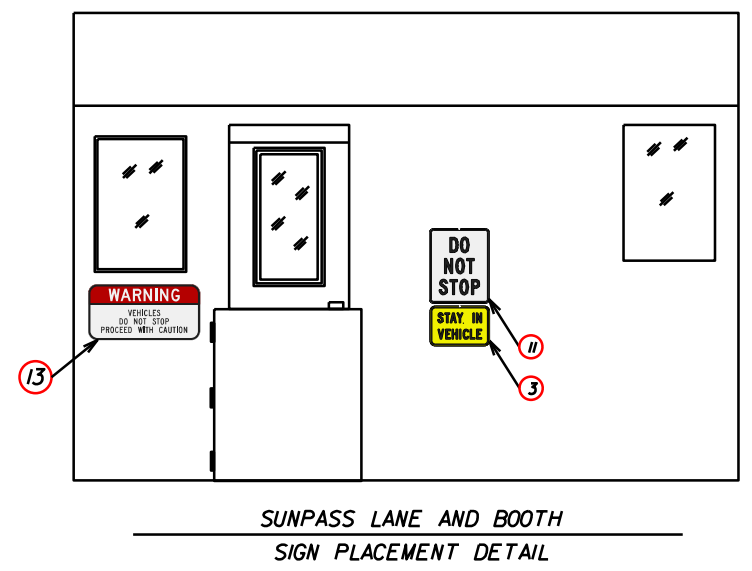


UNSTAFFED COIN LANE - NO BOOTH  
SIGN PLACEMENT DETAIL

N.T.S.

\$DATE\$

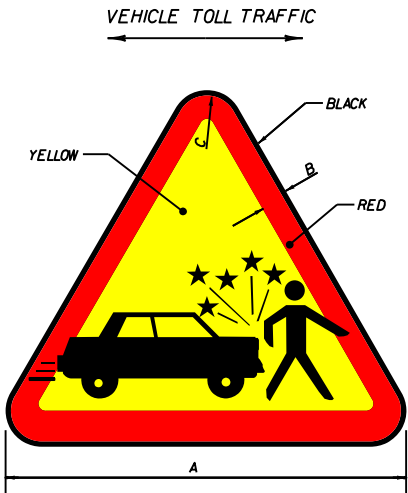
REVISIONS						STATE OF FLORIDA DEPARTMENT OF TRANSPORTATION			COIN LANE TOLL PLAZA SIGNING LAYOUT	SHEET NO.  107-2
DATE	BY	DESCRIPTION	DATE	BY	DESCRIPTION					
						ROAD NO.	COUNTY	FINANCIAL PROJECT ID		



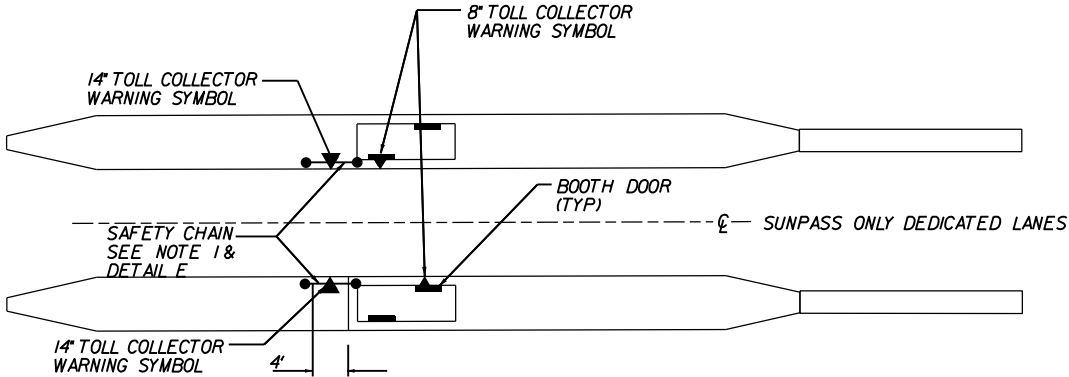
REVISIONS							STATE OF FLORIDA DEPARTMENT OF TRANSPORTATION			SUNPASS LANE TOLL PLAZA SIGNING LAYOUT	SHEET NO.
DATE	BY	DESCRIPTION	DATE	BY	DESCRIPTION		ROAD NO.	COUNTY	FINANCIAL PROJECT ID		107-3

SYMBOL DIMENSIONS			
OVERALL SIZE	A	B	C
8"	8"	.6"	.6"
14"	14"	1"	1"

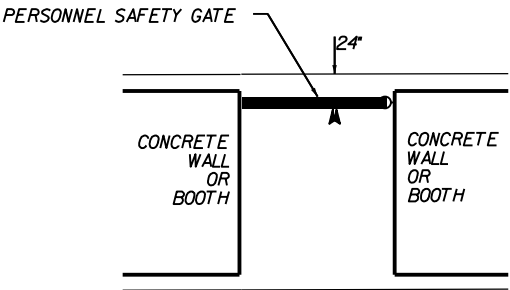
NOTE: SYMBOLS SHALL BE PLACED IN BOOTH DOORWAYS AND WALKWAYS AS SHOWN ON PLANS. SURFACES SHALL BE THOROUGHLY CLEANED PRIOR TO APPLICATION.



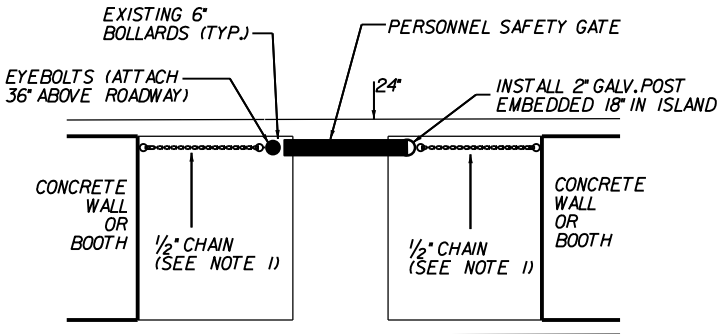
TYPICAL TOLL ATTENDANT WARNING SYMBOL  
NTS



DETAIL "C"  
TYPICAL ISLAND LOCATIONS FOR  
TOLL COLLECTOR WARNING SYMBOLS  
DEDICATED AND MIXED USE LANES  
N.T.S.



DETAIL "D"  
FOR MAINLINE PLAZA CROSSWALKS  
WITHOUT BOLLARDS.  
(DEDICATED LANES ONLY)  
N.T.S.

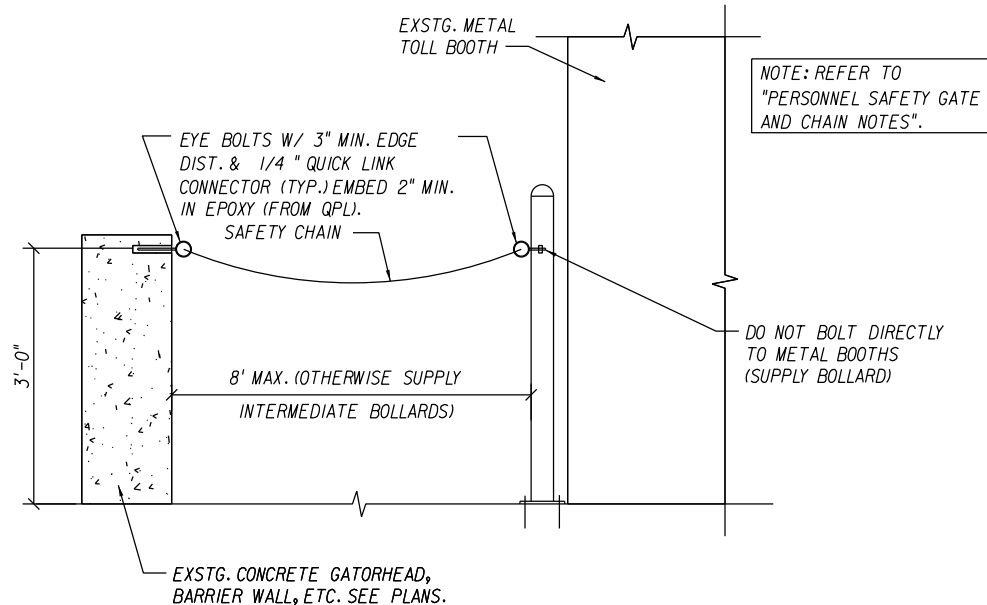
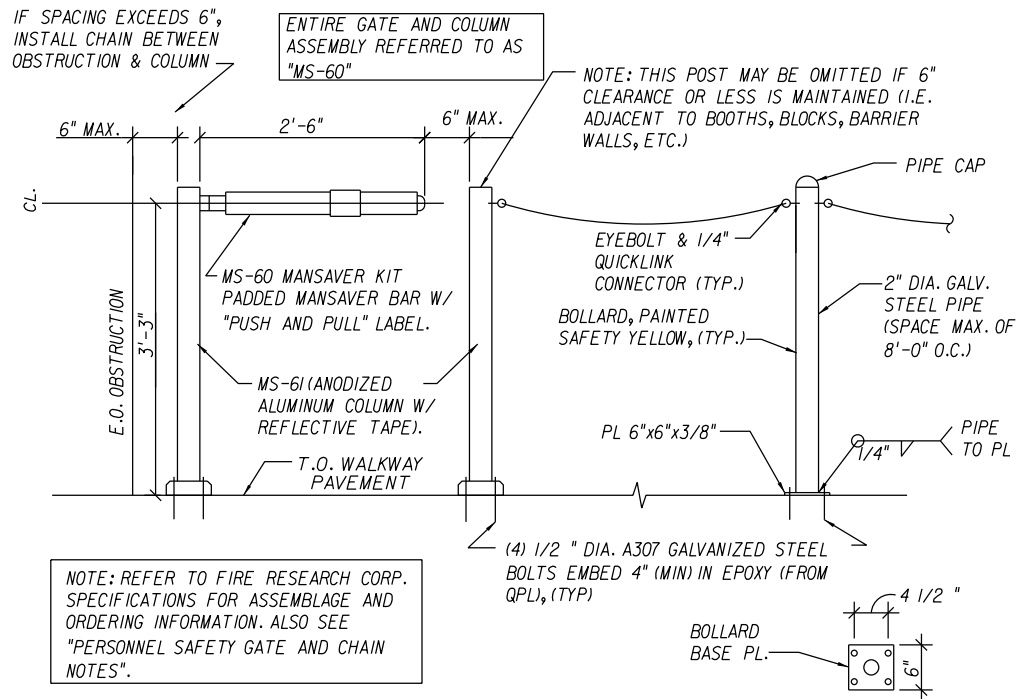


DETAIL "E"  
FOR MAINLINE PLAZA CROSSWALKS  
WITH BOLLARDS.  
(DEDICATED LANES ONLY)  
N.T.S.

- NOTES:
1. SIGNS SHALL BE MOUNTED ONLY ON ISLANDS BORDERING SUNPASS DEDICATED LANES.
  2. SIGN TPK-5 (SEE DRAWING III-6), ON ISLAND, TO BE FASTENED ON VERTICAL CONCRETE WALL WITH LAG SHIELDS. SIGN SHALL BE MOUNTED SO AS TO NOT OBSTRUCT ELECTRIC OUTLETS, JUNCTION BOXES, OR CONTROL CABINETS.
  3. SIGN TPK-5 (SEE DRAWING III-6), ON CONCRETE BOOTH, SHALL BE MOUNTED ABOVE WINDOW NEXT TO BOOTH DOOR AND CENTERED ON CONCRETE COLUMN. SIGN SHALL BE MOUNTED WITH LAG SHIELDS. CLEARANCES SHALL COMPLY WITH STANDARD PLANS, INDEX 700-101.
  4. SIGN TPK-5 (SEE DRAWING III-6) SHALL BE POST MOUNTED ADJACENT TO SIDEWALK BETWEEN ADMINISTRATION BUILDING AND NEAREST TOLL LANE.

- NOTES:
1. SAFETY CHAINS SHALL CONSIST OF 1/2" YELLOW COLORED, VINYL-COATED STEEL CHAIN, SNAPHOOK, SHACKLES, EYEBOLTS, AND ANCHORS. THE SAFETY CHAINS SHALL BE ANCHORED TO CONCRETE WALL, MASONRY, OR BOLLARDS BY LAG SHIELDS AND 3/8" EYEBOLTS. STEEL BOLLARDS SHALL BE FIELD GALVANIZED AROUND HOLES AND YELLOW PAINT SHALL BE TOUCHED UP. CHAINS ARE TO BE INSTALLED ON DEDICATED LANE SIDE OF ISLANDS ONLY. INSTALL 2" GALVANIZED POSTS WITH END CAPS WHERE THERE ARE NO BOLLARDS AS SHOWN IN DETAIL E. NO SAFETY CHAINS OR POSTS SHALL BE LOCATED TO INTERFERE WITH THE OPERATION OF ELECTRONIC VEHICLE SEPERATOR EQUIPMENT.

REVISIONS						STATE OF FLORIDA DEPARTMENT OF TRANSPORTATION	TOLL PLAZA SPECIAL DETAILS		SHEET NO.  107-4
DATE	BY	DESCRIPTION	DATE	BY	DESCRIPTION				



1. PERSONNEL SAFETY GATES SHALL BE INSTALLED WHERE INDICATED ON PLANS. THESE GATES SHALL BE CONSTRUCTED WITH SAFETY BARS AS MANUFACTURED BY FIRE RESEARCH CO. (1-800-645-0074) OR EQUAL, AND SOLD UNDER THE BRAND NAME MANSAYER, MODEL MS-60. BARS SHALL BE PADDED WITH YELLOW VINYL COVERINGS AND SHALL BE THIRTY (30) INCHES IN LENGTH, INCLUDING THE DOUBLE ACTING HINGE. EACH GATE SHALL CONSIST OF ONE (1) ALUMINUM (6061-T6) MANSAYER BAR (MS-60 MANSAYER KIT) ATTACHED TO THE TOP OF AN EXTRUDED ALUMINUM (6065-T6) 3-INCH SQUARE CROSS SECTION ALUMINUM POST (MS-61) WITH AN ALUMINUM CAST KNUCKLE WITH A BASE FOR ANCHORING TO THE WALKWAY AREA. BASE PLATE SHOULD BE ANCHORED TO CONCRETE W/ (4) - 1/2 " DIA. A307 GALVANIZED STEEL ANCHOR BOLTS, EMBED 4" IN EPOXY. AN ADDITIONAL DUPLICATE POST SHALL BE PROVIDED WITH EACH GATE TO MOUNT. SIMILARLY TO THE WALKWAY PAVEMENT AT THE UNCONNECTED OR FREE END OF THE MANSAYER BAR. THIS ADDITIONAL POST MAY OR MAY NOT BE REQUIRED TO BE INSTALLED BASED ON FIELD CONDITIONS. THE POST AND GATE ASSEMBLY (TOGETHER) ARE REFERRED TO AS THE "MANSAYER BAR AND UPRIGHT STANCHION KIT", MODEL MS-60.

2. AN EYE BOLT SHALL BE MOUNTED AT THE TOP OF EACH POST FOR CONTINUATION OF SAFETY CHAIN. CAPS SHALL BE PROVIDED IN THE TOP OF THE POSTS. POSTS SHALL BE INSTALLED LEVEL. THE CENTERLINE OF THE MANSAYER BAR SHALL BE THIRTY-NINE (39) INCHES ABOVE THE WALKWAY PAVEMENT. POST EYE BOLTS SHALL ALSO ACCOMMODATE THE THIRTY-SIX INCH (36") MOUNTING HEIGHT (ABOVE THE ISLAND) FOR SAFETY CHAIN.

3. CHAIN SHALL BE 4/0 STRAIGHT LINK COIL CHAIN POLY-COATED BLU-KROME MODEL NO. 14033-1117 AS MANUFACTURED BY COOPER (919-362-7541) OR EQUAL. THE CHAIN COLOR SHALL BE SAFETY YELLOW. THE CHAIN SHALL BE LOCATED ON THE ISLAND NO LESS THAN TWELVE (12) INCHES AND NO GREATER THAN EIGHTEEN (18) INCHES OFF THE EDGE OF THE ISLAND CURB ADJACENT TO THE LANE. THE CHAIN SHALL BE LOCATED APPROXIMATELY THIRTY-SIX (36) INCHES OFF THE SURFACE OF THE ISLAND, I.E., APPROXIMATELY FORTY-TWO (42) INCHES ABOVE THE LANE PAVEMENT. CHAIN SHALL BE ATTACHED TO THE BOLLARD EYE BOLTS AT BOTH ENDS WITH ONE-QUARTER (1/4) INCH QUICK LINK CONNECTORS, PART NO. 764-0536, AS MANUFACTURED BY COOPER, OR EQUAL. CHAIN SHALL BE INSTALLED SUCH THAT THERE IS MINIMAL CHAIN SAG ALLOWING REMOVAL OF THE CHAIN.

4. BOLLARDS: THE CONTRACTOR SHALL INSTALL THIRTY-SIX (36) INCH HIGH BOLLARDS OF TWO (2) INCH DIAMETER GALVANIZED STEEL PIPE AT SPACING NO GREATER THAN EIGHT (8) FEET APART. BOLLARDS SHALL BE CAPPED AND BE WELDED TO 6"x6"x3/8" BASE PLATE. BASE PLATE SHOULD BE BOLTED TO EXISTING CONCRETE SLAB W/ (4) - 1/2 " DIA. A307 GALVANIZED STEEL ANCHOR BOLTS, EMBED 4" IN EPOXY. PIPE SHALL BE PAINTED SAFETY YELLOW WITH A PAINT APPROPRIATE FOR APPLICATION TO GALVANIZED SURFACES. BOLLARDS SHALL BE ATTACHED PERMANENTLY TO THE ISLAND SURFACE AND SHALL NOT BE EASILY REMOVED WITHOUT POWER EQUIPMENT. USE OF EXISTING BOLLARDS IS ENCOURAGED BUT NOT AT THE EXPENSE OF DEVIATING FROM REQUIREMENTS HERE IN.

5. CHAIN ATTACHMENT: CHAIN AND QUICK LINKS SHALL BE CONNECTED TO BOLLARDS WITH EYE BOLTS. CHAIN SHALL NOT PASS THROUGH A RING ON THE BOLLARD BUT SHALL TERMINATE AT ONE, OR BOTH SIDES OF THE BOLLARD AS NECESSARY, WITH A QUICK LINK CONNECTOR. CHAIN MAY NOT BE ATTACHED TO AUTOMATIC COIN MACHINES, GATE HOUSINGS, ANY SUNPASS OR MISCELLANEOUS EQUIPMENT, OR PREFABRICATED TOLL BOOTHS.

6. SAFETY CHAIN CLEARANCES: TOLL EQUIPMENT (I.E. GATES, AUTOMATIC COIN MACHINES, SUNPASS EQUIPMENT, ETC.) OPERATION AND TECHNICIAN ACCESS SHALL NOT BE AFFECTED BY THE PLACEMENT OF CHAIN OR BOLLARDS. BOLLARD PLACEMENT SHALL BE NO FURTHER THAN NINE (9) INCHES AND NO CLOSER THAN SIX (6) INCHES FROM GATE HOUSINGS AND SHALL NOT CONFLICT WITH THE ENTRY AND EXIT OF PERSONNEL FROM TUNNEL STAIR WELLS. IF AUTOMATIC COIN MACHINES (ACMS) HAVE NOT BEEN REMOVED PRIOR TO SUNPASS CONVERSION, THE CONTRACTOR SHALL SUPPLY THE NECESSARY LENGTH OF CHAIN AND QUICK LINK CONNECTORS TO THE TURNPIKE TO CLOSE THE GAP WHERE THE ACM OR TOLL BOOTH ONCE OCCUPIED. IF ONLY AN ACM IS PRESENT ON THE ISLAND AND IT HAS NOT BEEN REMOVED PRIOR TO SUNPASS CONVERSION, THE CONTRACTOR SHALL INSTALL A POST ON THE ISLAND OR FLOOR PLATE ON EITHER SIDE OF THE ACM FOR CHAIN TERMINATION.

7. PERSONNEL SAFETY GATES: THE CONTRACTOR SHALL PROVIDE AND INSTALL PERSONNEL SAFETY GATES WHERE INDICATED ON PLANS. SAFETY BAR CENTERLINE HEIGHT SHALL BE THIRTY-NINE (39) INCHES ABOVE THE WALKWAY. THE SAFETY GATE SHALL ALWAYS BE ORIENTED SUCH THAT THE GATE HINGE IS LOCATED TO THE RIGHT SIDE ON APPROACH TO THE DEDICATED LANE (I.E., TO THE LEFT IF DEPARTING THE DEDICATED LANE.)

8. WALKWAY WIDTH AND CHANNELIZATION OF PERSONNEL: THE WALKWAY MAY BE GREATER WIDTH THAN THE WIDTH OF THE GATE, IN WHICH CASE THE CONTRACTOR SHALL "CHANNELIZE" ANY OPENINGS AROUND THE GATE BY CONNECTING ADDITIONAL CHAIN FROM THE SQUARE TUBULAR COLUMN BOLTED TO THE SAFETY BAR TO THE CLOSEST ALLOWABLE CONNECTION POINT, OR FROM THE SQUARE TUBULAR COLUMN LOCATED ADJACENT TO THE SWINGING GATE ARM AT THE CLOSEST ALLOWABLE CONNECTION POINT. THE DESIRABLE AND MAXIMUM WIDTH OF GAP BETWEEN THE SAFETY GATE ARM AND THE ADJACENT COLUMN IS SIX (6) INCHES. IN INSTANCES WHERE THE WALKWAY IS LESS THAN FOUR (4) FEET IN WIDTH, THE CONTRACTOR MAY RELOCATE THE SQUARE TUBULAR COLUMN WHICH IS NOT ATTACHED TO THE SAFETY BAR AND MOUNT IT ON THE ISLAND ADJACENT TO THE WALKWAY, OR ELIMINATE IT COMPLETELY IF THERE IS AN ADJACENT AND ALLOWABLE MOUNTING SURFACE WHICH DOES NOT ALLOW A GAP GREATER THAN SIX (6) INCHES IN WIDTH.

9. CHAIN AND GATE LAYOUT AND FIELD ISSUE RESOLUTION: THE CONTRACTOR SHALL USE GOOD JUDGMENT AND FOLLOW THE CRITERIA HEREIN AND AS INDICATED ON THE PLANS IN LAYOUT AND ATTACHMENT OF THE CHAIN AND PERSONNEL GATES WITHIN THE WALKWAYS. ANY QUESTIONABLE SITUATION WHICH REQUIRES CLARIFICATION IN THE FIELD SHALL BE BROUGHT TO THE ATTENTION OF THE DEPARTMENT'S FIELD REPRESENTATIVE AND TO THE ENGINEER.

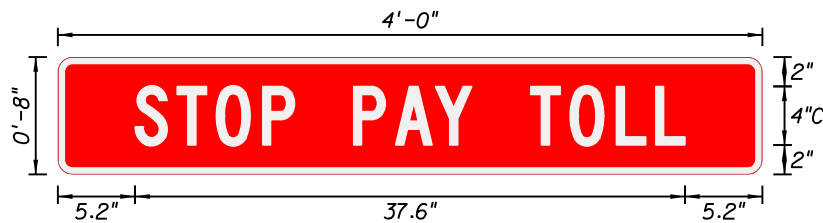
\$ DATES

REVISIONS						STATE OF FLORIDA DEPARTMENT OF TRANSPORTATION	TOLL PLAZA SPECIAL DETAILS		SHEET NO.
DATE	BY	DESCRIPTION	DATE	BY	DESCRIPTION				
						ROAD NO.	COUNTY	FINANCIAL PROJECT ID	107-5

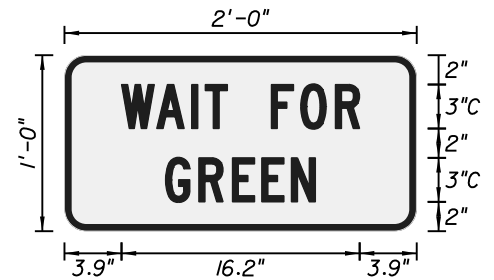
SIGN NAME		TPK-I			
QUANTITY		1			
WIDTH		1'-6"			
HEIGHT		1'-0"			
BORDER WIDTH		0.5"			
BORDER RADII		1.5"			
PANEL COLOR		Fluorescent Yellow			
LEGEND		Black			
BORDER		Black			
SYMBOL(S)	ANGLE	X	Y	WID	HT
SIGN NUMBER	CLEARANCE EDGE OF LANE	COLUMN SIZE STEEL			AVERAGE LENGTH

[illegible]

SIGN NAME	TPK-4					
QUANTITY	1					
WIDTH	4' -0"					
HEIGHT	0'-8"					
BORDER WIDTH	0.5"					
BORDER RADII	1"					
PANEL COLOR	Red					
LEGEND	White					
BORDER	White					
SYMBOL(S)	ANGLE	X	Y	WID	HT	
SIGN NUMBER	CLEARANCE EDGE OF LANE	COLUMN SIZE STEEL			AVERAGE LENGTH	

[illegible]

SIGN NAME		TPK-2			
QUANTITY		1			
WIDTH		2'-0"			
HEIGHT		1'-0"			
BORDER WIDTH		0.5"			
BORDER RADII		1.5"			
PANEL COLOR		White			
LEGEND		Black			
BORDER		Black			
SYMBOL(S)	ANGLE	X	Y	WID	HT
SIGN NUMBER	CLEARANCE EDGE OF LANE	COLUMN SIZE		AVERAGE LENGTH	

[illegible]

SIGN NAME	TPK-5					
QUANTITY	1					
WIDTH	3'-0"					
HEIGHT	1'-6"					
BORDER WIDTH	0.75"					
BORDER RADII	3"					
PANEL COLOR	Red/White					
LEGEND	White/Black					
BORDER	Black/Black					
SYMBOL(S)	ANGLE	X	Y	WID	HT	
SIGN NUMBER	CLEARANCE EDGE OF LANE	COLUMN SIZE			AVERAGE LENGTH	

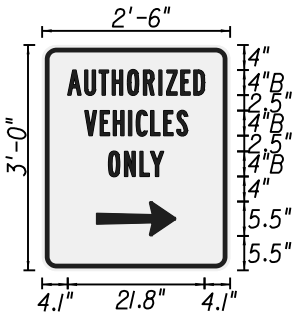
[illegible]

DATE	REVISIONS						STATE OF FLORIDA DEPARTMENT OF TRANSPORTATION	TOLL PLAZA SIGNING DETAILS PLAZA AREA SIGN PANELS	SHEET NO.			
	DATE	BY	DESCRIPTION	DATE	BY	DESCRIPTION						
									ROAD NO.	COUNTY	FINANCIAL PROJECT ID	107-6

SIGN NAME	TPK-6					
QUANTITY	1					
WIDTH	4'-6"					
HEIGHT	0'-8"					
BORDER WIDTH	0.5"					
BORDER RADII	1"					
PANEL COLOR	Fluorescent Yellow					
LEGEND	Black					
BORDER	Black					
SYMBOL(S)	ANGLE	X	Y	WID	HT	
SIGN NUMBER	CLEARANCE EDGE OF LANE	COLUMN SIZE STEEL		AVERAGE LENGTH		



SIGN NAME	TPK-8					
QUANTITY	1					
WIDTH	2'-6"					
HEIGHT	3'-0"					
BORDER WIDTH	0.75" INSET: 0.5"					
BORDER RADII	1.875"					
PANEL COLOR	White					
LEGEND	Black					
BORDER	Black					
SYMBOL(S)	ANGLE	X	Y	WID	HT	
ARLONG	0	8.7	5.5	12.6	5.5	
SIGN NUMBER	CLEARANCE EDGE OF LANE	COLUMN SIZE		AVERAGE LENGTH		

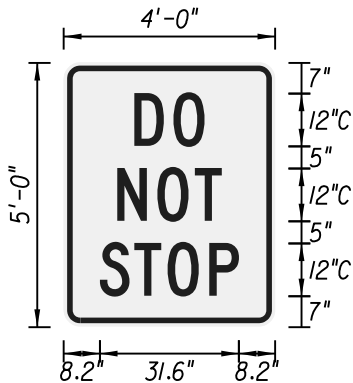


1. TO BE LOCATED AT MAINTENANCE PULL-OFF AREAS  
2. SEE CURRENT GTR FOR MOUNTING CRITERIA

COPY		W	A	T	C	H		F	O	R		P	E	D	E	S	T	R	I	A	N	S	
SPACE	2.4	2.7	2.3	2.1	2.3	1.7	4	2.1	2.6	1.7	4	2.4	2.1	2.4	2.1	2.3	2.1	2.4	1.1	2.7	2.4	1.7	2.4
COPY	L																						
SPACE	49.2																						
COPY																							
SPACE																							
COPY																							
SPACE																							
COPY																							
SPACE																							
COPY																							
SPACE																							

COPY		A	U	T	H	O	R	I	Z	E	D		L										
SPACE	4.1	2.7	2.3	2.1	2.4	2.6	2.4	1.2	2.3	2.1	1.7	4.1	21.8										
COPY		V	E	H	I	C	L	E	S		L												
SPACE	6.8	2.4	2.1	2.4	1.2	2.3	2.1	2.1	1.7	6.9	16.3												
COPY		O	N	L	Y		L																
SPACE	10.6	2.6	2.4	1.7	2.1	10.6	8.8																
COPY																							
SPACE																							
COPY																							
SPACE																							
COPY																							
SPACE																							

SIGN NAME	TPK-7					
QUANTITY	1					
WIDTH	4'-0"					
HEIGHT	5'-0"					
BORDER WIDTH	1.25"					
BORDER RADII	3" INSET: 0.75"					
PANEL COLOR	White					
LEGEND	Black					
BORDER	Black					
SYMBOL(S)	ANGLE	X	Y	WID	HT	
SIGN NUMBER	CLEARANCE EDGE OF LANE	COLUMN SIZE STEEL		AVERAGE LENGTH		



1. FOR RAMP AND MAINLINE USE  
2. SEE CURRENT GTR FOR MOUNTING CRITERIA

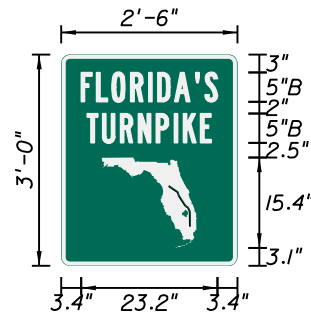
SIGN NAME						
QUANTITY						
WIDTH						
HEIGHT						
BORDER WIDTH						
BORDER RADII	INSET: 0.38"					
PANEL COLOR						
LEGEND						
BORDER						
SYMBOL(S)	ANGLE	X	Y	WID	HT	
SIGN NUMBER	CLEARANCE EDGE OF LANE	COLUMN SIZE		AVERAGE LENGTH		

COPY																						
SPACE																						
COPY																						
SPACE																						
COPY																						
SPACE																						
COPY																						
SPACE																						
COPY																						
SPACE																						
COPY																						
SPACE																						





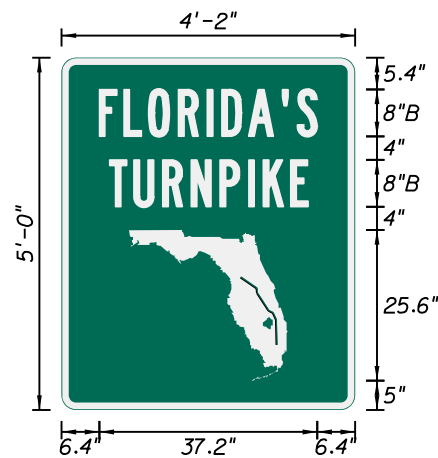
SIGN NAME		TPK-SHIELD			
QUANTITY		1			
WIDTH		2'-6"			
HEIGHT		3'-0"			
BORDER WIDTH		0.75"			
BORDER RADII		1.5"			
PANEL COLOR		Green			
LEGEND		White			
BORDER		White			
SYMBOL(S)	ANGLE	X	Y	WID	HT
FLSM	0	6.9	3.1	16.2	15.4
SIGN NUMBER	CLEARANCE EDGE OF LANE	COLUMN SIZE STEEL			AVERAGE LENGTH



TO BE USED FOR TRAILBLAZING AND ON CROSS ROADS

[illegible]

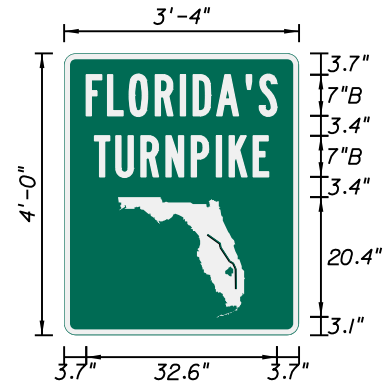
SIGN NAME		TPK-SHIELD3			
QUANTITY		1			
WIDTH		4'-2"			
HEIGHT		5'-0"			
BORDER WIDTH		1.25"			
BORDER RADII		2.5"			
PANEL COLOR		Green			
LEGEND		White			
BORDER		White			
SYMBOL(S)	ANGLE	X	Y	WID	HT
FL_LG	0	11.5	5	27	25.6
SIGN NUMBER	CLEARANCE EDGE OF LANE	COLUMN SIZE STEEL			AVERAGE LENGTH



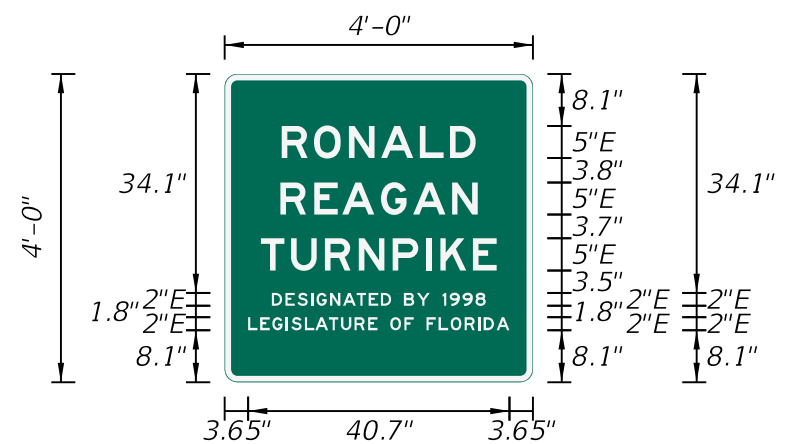
## SPECIAL APPLICATIONS

[illegible]

SIGN NAME		TPK-SHIELD2			
QUANTITY		1			
WIDTH		3'-4"			
HEIGHT		4'-0"			
BORDER WIDTH		1"			
BORDER RADII		2"			
PANEL COLOR		Green			
LEGEND		White			
BORDER		White			
SYMBOL(S)	ANGLE	X	Y	WID	HT
FL_MD	0	9.2	3.1	21.6	20.4
SIGN NUMBER	CLEARANCE EDGE OF LANE	COLUMN SIZE			AVERAGE LENGTH



TO BE USED ON GUIDE SIGN PANELS AND POST INTERCHANGE SIGNING

[illegible][illegible][illegible]SDATES

REVISIONS							STATE OF FLORIDA DEPARTMENT OF TRANSPORTATION			SPECIAL SIGN DETAILS TURNPIKE SHIELD DETAILS	SHEET NO.
DATE	BY	DESCRIPTION	DATE	BY	DESCRIPTION		ROAD NO.	COUNTY	FINANCIAL PROJECT ID		108-1

[illegible]

NOTES:

BEACHLINE EXPRESSWAY, SR 528  
FIRST COAST EXPRESSWAY, SR 23  
POLK PARKWAY, SR 570  
SAWGRASS EXPRESSWAY, SR 869  
SEMINOLE EXPRESSWAY, SR 417  
SUNCOAST PARKWAY, SR 589  
VETERANS EXPRESSWAY, SR 589  
WESTERN BELTWAY, SR 429  
WEKIVA PARKWAY, SR 429

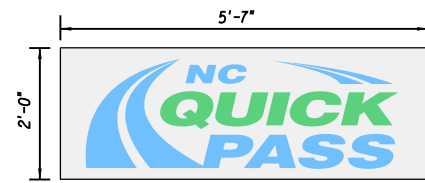
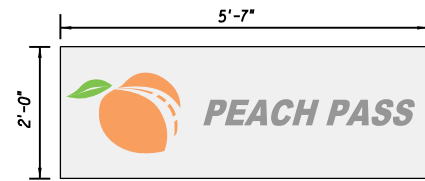
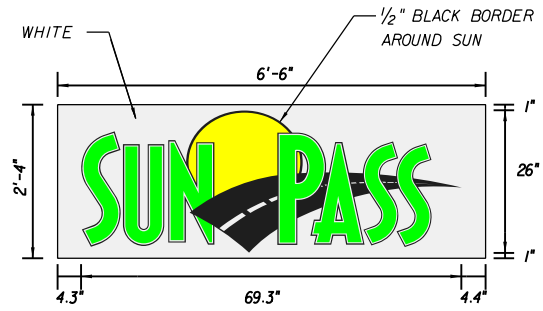
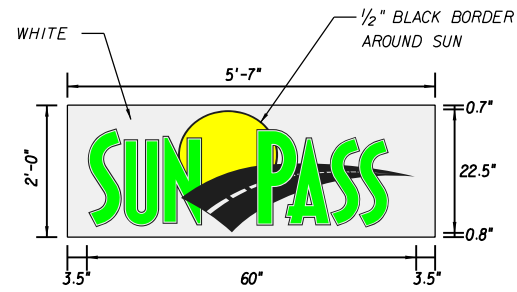
## JUNCTION ASSEMBLIES

TRAILBLAZER  
ASSEMBLIES

AET-08

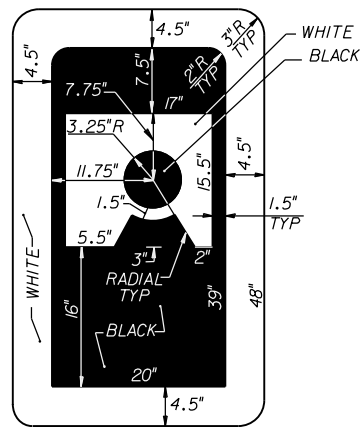
AET-09

[illegible]

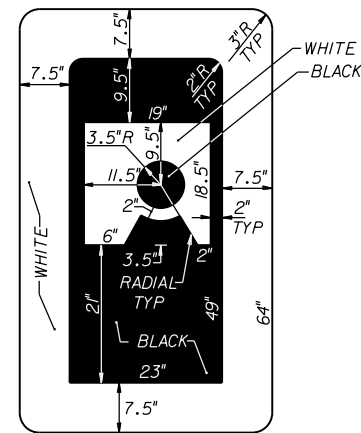


#### GENERAL NOTES FOR SUNPASS SHIELD ON MIXED-USE LANES

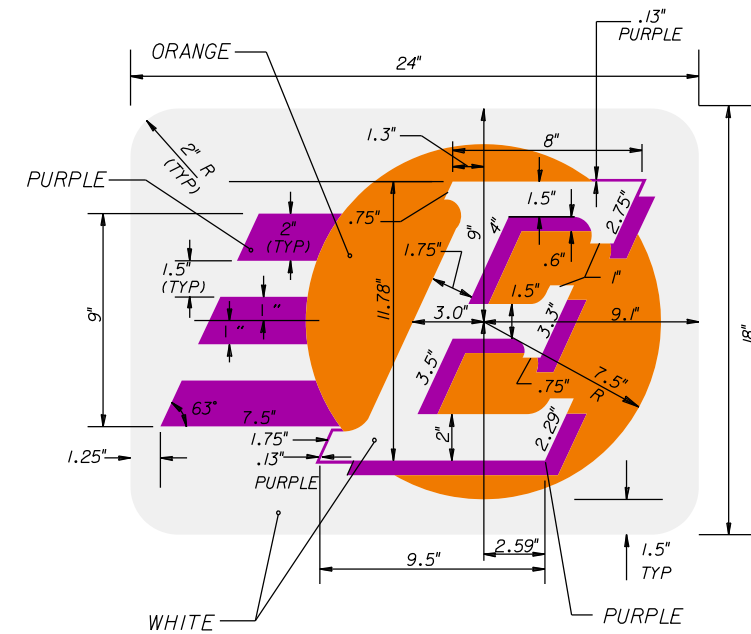
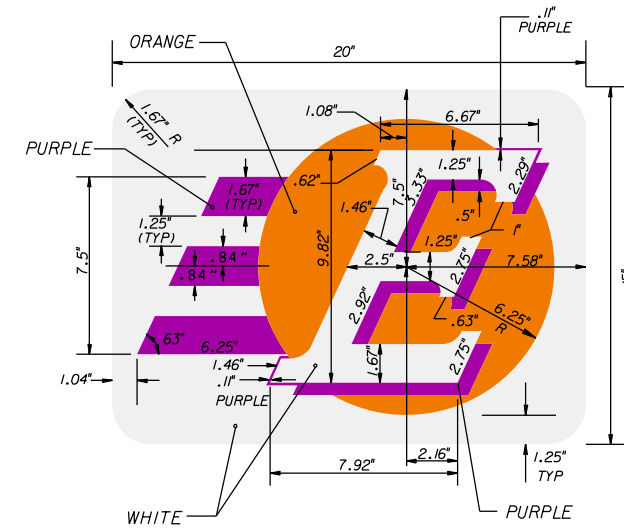
1. THE DEPARTMENT WILL PROVIDE THE LOGO IN MICROSTATION FORMAT FOR USE IN SIGN FABRICATION.
2. THE LOGO SHALL NOT BE FABRICATED BY HAND CUT OUT METHOD.
3. ALL SIGN COLORS SHALL BE STANDARD HIGHWAY COLORS AS SPECIFIED IN THE MUTCD



TOLL ATTENDANT SHIELD  
FOR CANOPY MOUNTED SIGNS  
29" X 48"



TOLL ATTENDANT SHIELD  
FOR APPROACH SIGNS  
38" X 64"



#### GENERAL NOTES FOR EPASS SHIELD:

1. EPASS LOGO COLORS:

WHITE  
PURPLE, 3M VIOLET NO. 893 OR APPROVED EQUAL.  
ORANGE, 3M ORANGE NO. 886 OR APPROVED EQUAL.

2. NARROW PORTIONS OF SPECIAL DESIGN COPY IN EPASS LOGO SHALL HAVE MINIMUM THICKNESS OF 1.00 INCH.
3. ALL DIMENSIONS ARE IN INCHES.
4. THIS SHIELD SHALL BE ATTACHED BY RIVETING METHOD ONLY. NO ADHESIVES OR OTHER MEANS ARE ALLOWED.

SDATES

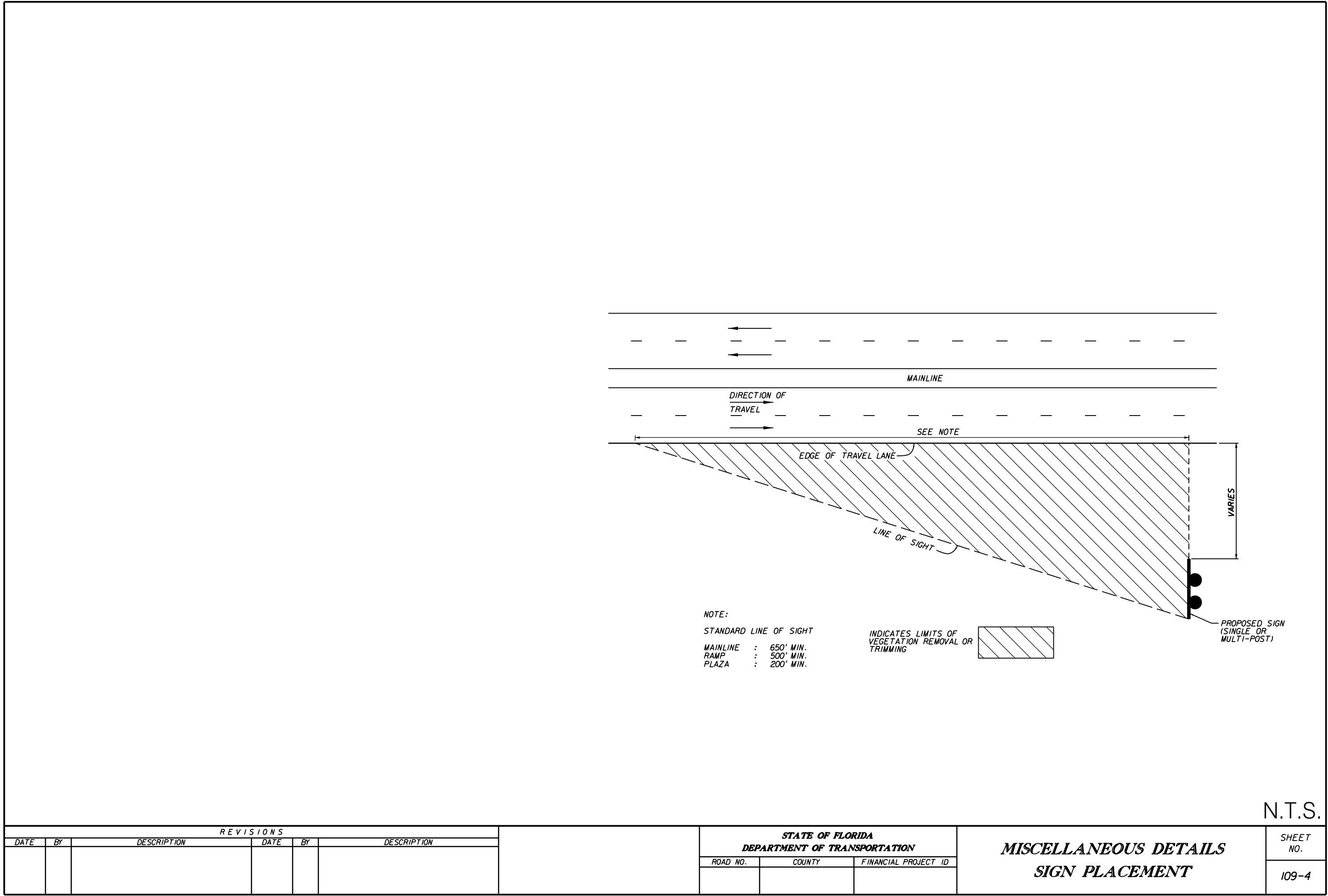
REVISIONS						STATE OF FLORIDA DEPARTMENT OF TRANSPORTATION			SPECIAL SIGN DETAILS PLAZA SHIELD DETAILS	SHEET NO.  108-3
DATE	BY	DESCRIPTION	DATE	BY	DESCRIPTION	ROAD NO.	COUNTY	FINANCIAL PROJECT ID		





[illegible][illegible]

REVISIONS							STATE OF FLORIDA DEPARTMENT OF TRANSPORTATION			SPECIAL SIGN DETAILS (CONSTRUCTION INFORMATION)	SHEET NO.
DATE	BY	DESCRIPTION	DATE	BY	DESCRIPTION		ROAD NO.	COUNTY	FINANCIAL PROJECT ID		109-3



REVISIONS						STATE OF FLORIDA DEPARTMENT OF TRANSPORTATION	MISCELLANEOUS DETAILS SIGN PLACEMENT		SHEET NO.
DATE	BY	DESCRIPTION	DATE	BY	DESCRIPTION				
									109-4