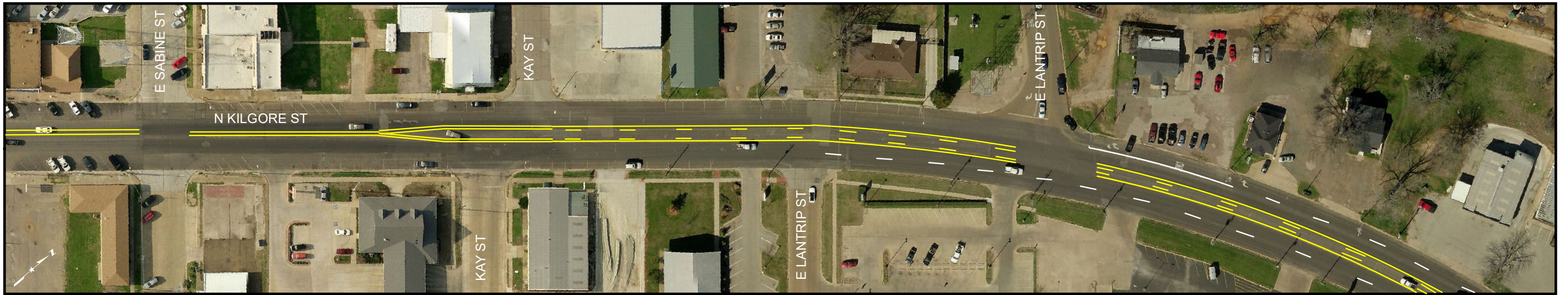


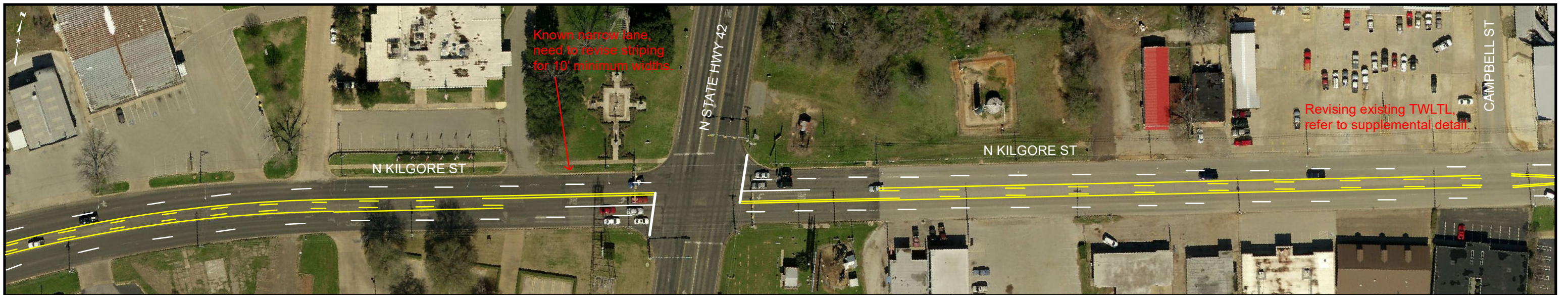
Kilgore St (Part 1)



Kilgore St (Part 2)



Kilgore St (Part 3)

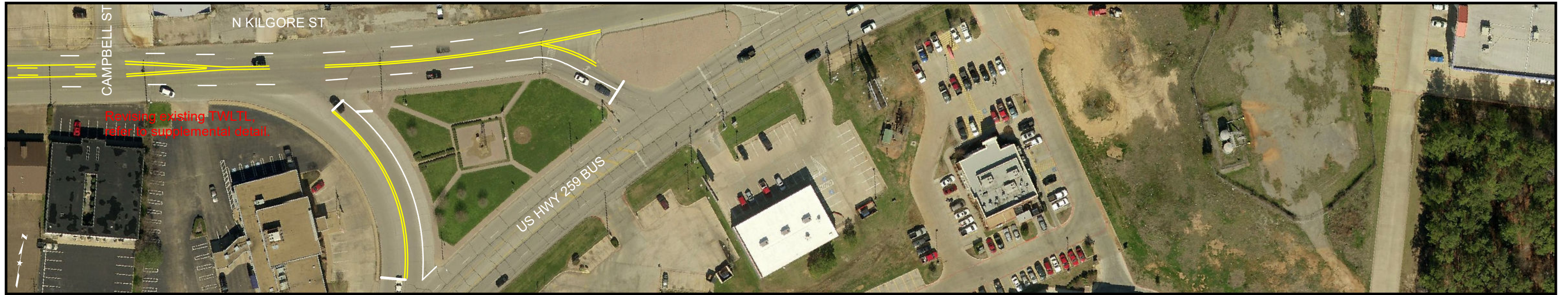


Striping patterns are for reference only and are not to scale.

All Lanes to be 10' minimum width

1 inch = 100 feet

Kilgore St (Part 4)



Pentecost Rd (North)



Pentecost Rd (South)



Willow Springs Rd



Striping patterns are for reference only and are not to scale.

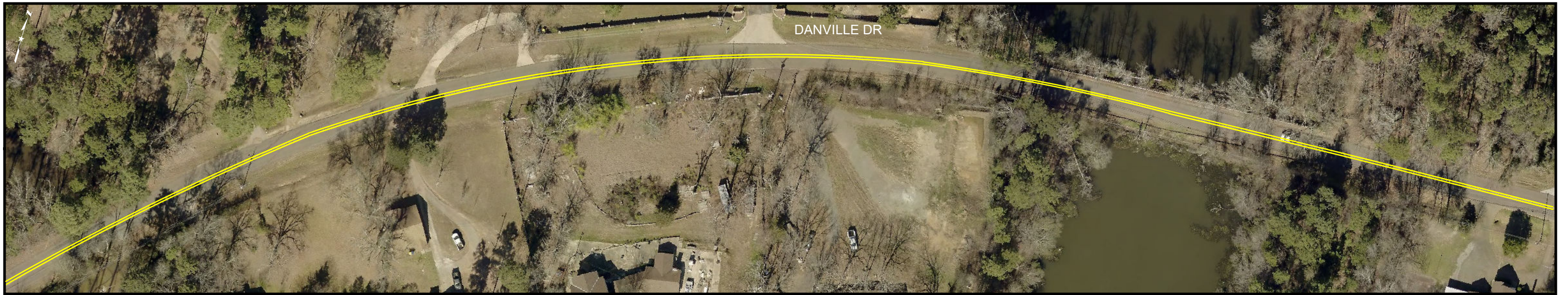
All Lanes to be 10' minimum width

1 inch = 100 feet

Danville Dr (Part 1)



Danville Dr (Part 2)



Danville Dr (Part 3)



Striping patterns are for reference only and are not to scale.

All Lanes to be 10' minimum width

1 inch = 100 feet

Southport Rd

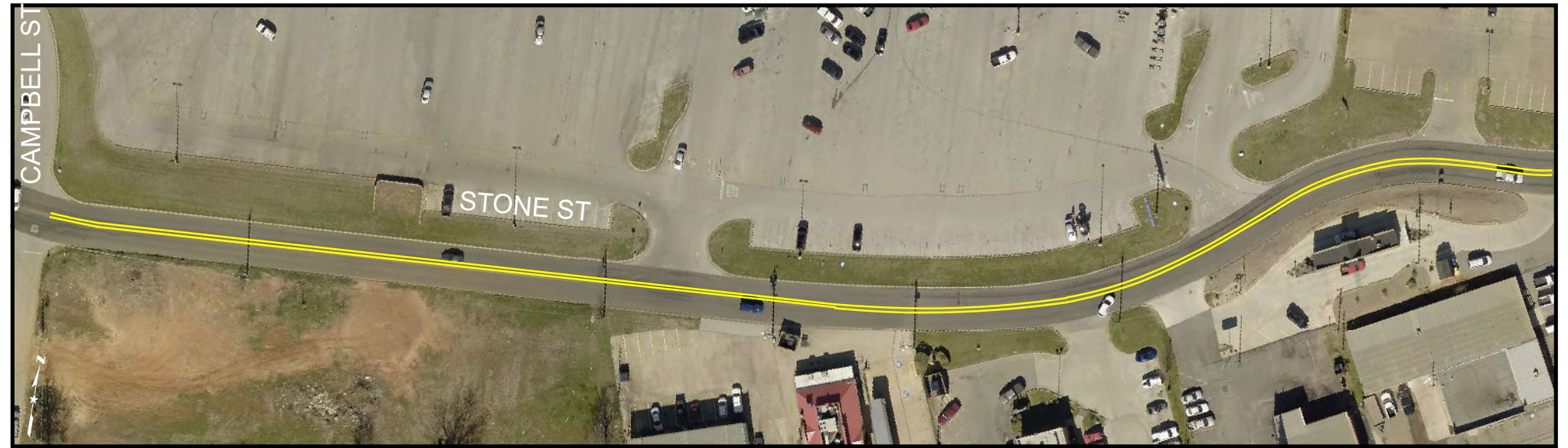


Striping patterns are for reference only and are not to scale.

Stone St (Part 1)



Stone St (Part 2)



Stone St (Part 3)



All Lanes to be 10' minimum width

1 inch = 100 feet

Supplemental Detail for Striping Revision on N Kilgore St.



Striping patterns are for reference only and are not to scale.

1 inch = 50 feet