



St. Johns River Water Management District

Ann B. Shortelle, Ph.D., Executive Director

525 Community College Parkway S.E. • Palm Bay, FL 32909 • 321-984-4940
On the internet at www.sjrwmd.com.

DATE: April 21, 2020
TO: Prospective Respondents
FROM: Amy Lucey, Procurement Specialist
SUBJECT: Addendum #4 to Quote Request 35543, Mechanical Vegetation Removal in the Upper Basin

The following clarifications/changes are provided for your information. Please make all appropriate changes to your bid / proposal documents. Note: changes are reflected with original language shown with strike-through and new language is underlined.

1. Page 1, paragraph 2 and EXHIBIT 1 – STATEMENT OF WORK I. INTRODUCTION/BACKGROUND to read as follows:

One of the challenges of maintenance is unwanted vegetation growing along levee slopes and at the toes of the internal levees. This woody vegetation impedes routine operations and maintenance activities and creates an unsafe condition due to low lying limbs. The District has identified four locations that require this vegetation be removed. These projects are in Brevard and Indian River, and Marion Counties (see attached site maps):

- ~~L 74N: is located along the flow way from the Stick Marsh west to S 96B~~
- ~~L 74E is located at the north end of the Stick Marsh and runs east from S 96B.~~
- ~~L 74W is at the north end Kenansville Lake and part of the Blue Cypress Conservation Area~~
- AP-1 is located at the north end of the Fellsmere Water Management Area
- **Fellsmere N-Levee is located at the north end of the Fellsmere Water Management Area**
- C-231 is located in Marion County and runs along the Upper Ocklawaha River.

2. Page 6, EXHIBIT 1 – STATEMENT OF WORK, Section III. SCOPE OF WORK, paragraph 1 to read as follows:

The Contractor shall provide the necessary equipment, operator(s) and associated appurtenances to remove light to heavy woody vegetation in the identified areas but not limited to levees, canals and around water control structures. The District has estimated approximately ~~25~~ **26** acres for this mechanical vegetation removal project (~~1-acre – L 74N; 6 acres – L 74E; 3 acres – L 74W; 12-acres –~~ **and 5 acres** C-231; and 3- acres – AP-1) **and 6 acres Fellsmere N. Levee.**

3. Pages 7 & 8, EXHIBIT 1 – STATEMENT OF WORK, IV. TASK IDENTIFICATION shall read as follows:



St. Johns River Water Management District

Ann B. Shortelle, Ph.D., Executive Director

525 Community College Parkway S.E. • Palm Bay, FL 32909 • 321-984-4940
On the internet at www.sjrwmd.com.

Site 1 — ~~L-74W~~ (3 acres) in the Blue Cypress Water Management Area consists of moderate density vegetation with occasional larger Brazilian Peppers and Willows. The work area is on one side of the levee starting at S-250D and running west to S-250E. This section is approximately 1 mile. Mechanical vegetation removal shall commence at the existing mowed vegetation line on the levee to 24 feet from the levee toe. The District estimates 3 acre for this site. See Map 1 and Map 2.

Site 2: — ~~L-74N~~ (1 acre) in the St. Johns Water Management Area consists of mostly of light vegetation with some moderate density vegetation. The section of levee is approximately is at the southern end of L-74N along the south toe and is approximately 1000 feet in length. This section has moderate density vegetation which requires removed from the southern toe for 24 feet or to the water's edge. Mechanical vegetation removal shall commence at the existing mowed vegetation line on the levee to 24 feet from the levee toe. See site map for approximate location, access for this work is from L74N. The District has estimated 1 acres for these two sites. See Map 1 and Map 2.

Site 3 — ~~L74E~~ (6 acres) in the northern section St. Johns Water Management Area consists of moderate density vegetation with an occasional small tree. The levee is approximately 2 miles in length with moderate density vegetation. along the south levee toe. Mechanical vegetation removal shall commence at the existing mowed vegetation line on the levee to 24 feet from the levee toe or water's edge. The District has estimated approximately 6 acres for this site. See Map 1 and Map 2.

Site 4: **AP-1** (3-acres) is in the Fellsmere Water Management Area and consist of heavy to moderate density vegetation with Brazilian Peppers, Willows and Palm Trees. The canal bank is 0.5-miles long and requires unwanted vegetation removal on one slope for approximately 40-feet from the existing mowed vegetation line. Mechanical vegetation removal shall commence at the existing mowed vegetation line on the levee to canal water line. The District has estimated 2.5-ares for this project. See Map 1 and Map 2.

Site 5: **C-231** (~~4217~~-acres) is located along the east bank of the Ocklawaha River in Marion County in the Sunnyhill Restoration Area and consist of moderate to low density vegetation with mostly herbaceous vegetation some willows, and an 3-three trees. The levee toe section being mechanically vegetated is approximately 5-miles long and requires unwanted vegetation removal on one slope along the east levee toe for approximately 20-feet from the existing mowed vegetation line. Mechanical vegetation removal shall commence at the existing mowed vegetation line and extend to the far side of the rim ditch, approximately 20-feet. The District has estimated 12-ares for this project. See Map 1 and Map 3.

Site 6: **Fellsmere N-Levee (6-acres) is located at the north end of the Fellsmere Water Management Area and consist of moderate density vegetation to with some trees. The levee is 2.5-miles long and requires unwanted vegetation removal on both slopes 10-feet from the existing mowed vegetation line. The total length of both slopes where work is to be performed is 20-feet. Remove any tree greater than 8-inch DBH that is within 10 feet on both sides. Any trees to remain will be marked by the District. Trim all limbs from trees up 15-feet from ground that**



St. Johns River

Water Management District

Ann B. Shortelle, Ph.D., Executive Director

525 Community College Parkway S.E. • Palm Bay, FL 32909 • 321-984-4940
On the internet at www.sjrwmd.com.

overhang into the 10-foot clear zone. This section is contiguous with Site-4, AP-1. The District has estimated approximately 6 acres for this mechanical vegetation removal. See Map

Attachments:

Page 1 and Statement of Work, pages 6, 7 & 8 revised Addendum 4

Quote Cost Schedule, page 11, revised Addendum 4

Map C231 Revised Addendum 4

Map Fellsmere N. Levee

NOTE: The Quote due date **has been changed** to 3:00 p.m., Thursday, April 30, 2020

Please acknowledge receipt of this Addendum on the QUOTE COST SCHEDULE provided in the quote request package.

If you have any questions, please e-mail me at alucey@sjrwmd.com



St. Johns River

Water Management District

Ann B. Shortelle, Ph.D., Executive Director

4049 Reid Street • P.O. Box 1429 • Palatka, FL 32178-1429 • (386) 329-4500
On the Internet at www.sjrwmd.com.

April 2, 2020

Interested Firms

Re: Quote Request 35543, Mechanical Vegetation Removal in the Upper Basin

The St. Johns River Water Management District (District) desires to Procure a contractor to mechanically remove woody vegetation from toe of slopes of levees in the Upper Basin.

One of the challenges of maintenance is unwanted vegetation growing along levee slopes and at the toes of the internal levees. This woody vegetation impedes routine operations and maintenance activities and creates an unsafe condition due to low lying limbs. The District has identified four locations that require this vegetation be removed. These projects are in Brevard and Indian River, and Marion Counties (see attached site maps):

- ~~L-74N: is located along the flow-way from the Stick Marsh west to S-96B~~
- ~~L-74E is located at the north end of the Stick Marsh and runs east from S-96B.~~
- ~~L-74W is at the north end Kenansville Lake and part of the Blue Cypress Conservation Area~~
- AP-1 is located at the north end of the Fellsmere Water Management Area
- **Fellsmere N-Levee is located at the north end of the Fellsmere Water Management Area**
- C-231 is located in Marion County and runs along the Upper Ocklawaha River.

If you are interested in this project, email your quote in PDF format, **after 8:00 a.m. and before 3:00 p.m. on April 23, 2020. April 30, 2020** Do not email the quote prior to or after this timeframe. It is preferred that all quotes be submitted as an attachment to an email addressed to Amy Lucey at ALucey@sjrwmd.com. Receipt will be acknowledged by 4:00 p.m. **Please contact me immediately if you do not receive an email receipt by 4:00PM.**

There will not be a site visit for this quote request.

If you need assistance or have any questions about submitting your quote, please email Amy Lucey at ALucey@sjrwmd.com. Between the release of this quote request and the posting of the notice of intended decision, Respondents to this quote request or persons acting on their behalf may not contact any employee or officer of the District concerning any aspect of this solicitation, except the procurement employee listed above. Violation of this provision is grounds for rejecting a response.

Minimum Qualifications: Respondent must use the Qualification Forms (Certificate as to Corporation, General, Similar Projects/References/Equipment Operator(s), Subcontractor, and Equipment Documentation) attached to document the minimum qualifications listed below. Failure to include these forms with the quote may be considered non-responsive.

EXHIBIT 1 — STATEMENT OF WORK
MECHANICAL VEGETATION MANAGEMENT SERVICES
L74N / L74E/L74W/AP-1/C-231

I. INTRODUCTION/BACKGROUND

The Upper St. Johns River Basin (USJRB) and U.S. Army Corps of Engineers (USACE) flood control levee systems located in Osceola, Brevard, Orange and Indian River Counties, were constructed beginning in the early 1960s. The St. Johns River Water Management District (District) maintains the levees, canals and boat access areas associated with these systems. A major portion of levee maintenance involves vegetation management and maintaining erosion control systems. The USACE and District staff jointly inspects the flood control systems (levees, structures and canals) semi-annually. Through these inspections, work plans, and recurring maintenance plans are developed to ensure long-term continuity of the flood control systems.

One of the challenges of maintenance is unwanted vegetation growing along levee slopes and at the toes of the internal levees. This woody vegetation impedes routine operations and maintenance activities and creates an unsafe condition due to low lying limbs. The District has identified four locations that require this vegetation be removed. These projects are in Brevard and Indian River, and Marion Counties (see attached site maps):

- ~~• L 74N: is located along the flow way from the Stick Marsh west to S-96B~~
- ~~• L 74E is located at the north end of the Stick Marsh and runs east from S-96B.~~
- ~~• L 74W is at the north end Kenansville Lake and part of the Blue Cypress Conservation Area~~
- AP-1 is located at the north end of the Fellsmere Water Management Area
- **Fellsmere No. Levee is located at the north end of the Fellsmere Water Management Area**
- C-231 is located in Marion County and runs along the Upper Ocklawaha River.

II. OBJECTIVE

The objective of this project is to remove all unwanted vegetation including woody vegetation, willows, Brazilian Pepper, and herbaceous vegetation from the levee toes and slope providing a safe travel for mowing equipment flood control inspections.

III. SCOPE OF WORK

The Contractor shall provide the necessary equipment, operator(s) and associated appurtenances to remove light to heavy woody vegetation in the identified areas but not limited to levees, canals and around water control structures. The District has estimated approximately ~~25~~ **26** acres for this mechanical vegetation removal project (~~1-acre L 74N; 6-acres L 74E; 3-acres L 74W; 12-acres~~ **and 5 acres C-231; and 3-acres – AP-1) and 6 acres Fellsmere N. Levee.**

Specialized equipment, tracked vehicle capable of mulching trees up to 24-inches in diameter, measured at breast-height (DBH), may be required for removal of the woody vegetation. This same specialized mulching equipment must be capable of mulching material to a size no greater than 2-inches in diameter and 12-inch long. Additionally, the equipment shall be capable of mulching the vegetation to ground level. Where standing water exists, the woody vegetation may be mulched to just below the water level.

Work shall include mulching vegetation in specified areas, leaving only those trees that have been identified and tagged by the District. The vegetation shall be mulched to below ground level. Spread mulch evenly in the work area or as directed by the District so as to not leave large piles of mulch. In some cases, the equipment used must be capable of working from the top of the levee to prevent damage to levee slopes (sod and/or riprap) and must be capable of cutting and mulching vegetation at the toe of the levee, to a minimum of 15-feet beyond the toe of slope. Where equipment cannot reach the toe of the levee from the top travel-way, the equipment may work from the slope of the levee (with the

approval of the District) but it must be equipped with low ground pressure tracks to prevent damage to levee slopes and toes. If levees are wet, work will cease until dry enough to prevent the equipment from sliding on the levees and causing damage. Damage to levee slopes shall be repaired by the Contractor within 72-hours and prior to invoice being submitted.

The vast majority of the District's properties are accessible with a regular vehicle for equipment fueling. However, the Contractor will be required to arrange other means for fueling such as walking equipment to and from staging area or utilizing an off-road vehicle with a bulk fuel tank for those properties that are not accessible via regular vehicle.

The term woody vegetation consists of vegetation that has a woody stem or trunk with a minimum diameter of two (2) inches DBH. Woody vegetation typically consists of willows, Brazilian Pepper, Wax Myrtle, etc. Vegetation with a stem or trunk greater than four inches DBH is considered a tree. Herbaceous vegetation consists of cattails, maiden cane, and other plant material that does not produce a woody stem. Herbaceous material is desirable for reducing wave attenuation along the open water portions of the levee and shall be preserved to the extent possible.

Density of Vegetation: Vegetation density, for the purpose of this contract, is classified in three categories: light, moderate and heavy.

- Light density consists of sparse willows, less than 4-inches DBH, along with maiden cane, cattails, and other herbaceous vegetation.
- Moderate density (75-300 trees per acre) is defined as vegetation less than 8-inches in DBH.
- Heavy density (more than 300 trees per acre) is defined as removal of vegetation 8-inches DBH or greater. Another factor of consideration will be the density of palm trees per acre.

It is the Contractor's responsibility to coordinate their schedule with the District. A site meeting with the District, the Contractor and the Contractor's operator shall be scheduled prior to the work commencing. The Contractor shall maintain adequate protection of his work and equipment from damage and shall protect public and privately-owned property, structures, utilities and work of any kind against damage or interruptions of service, which may result from the operations of the Contractor. Contractor shall repair and restore any such damage, injury, or loss at his expense. Contractor shall maintain a clean and safe work environment.

The Contractor shall be responsible for carefully examining the general area of the Work, the requirements of the Request and site conditions related to the Work, the time in which the Work must be completed, and any other details of the Work. The Contractor must satisfy itself from its own personal knowledge and experience or professional advice as to the character of the Work, the conditions and materials to be encountered, the character, quality, and quantities of the Work, and any other conditions affecting the Work, including surrounding land.

The District is responsible for inspecting the completed work to ensure that all requirements are met prior to payment.

IV. TASK IDENTIFICATION

Site 1 — **L-74W** (3 acres) in the Blue Cypress Water Management Area consists of moderate density vegetation with occasional larger Brazilian Peppers and Willows. The work area is on one side of the levee starting at S-250D and running west to S-250E. This section is approximately 1-mile. Mechanical vegetation removal shall commence at the existing mowed vegetation line on the levee to 24 feet from the levee toe. The District estimates 3-acre for this site. See Map 1 and Map 2.

Site 2: — **L-74N** (1-acre) in the St. Johns Water Management Area consists of mostly of light vegetation with some moderate density vegetation. The section of levee is approximately is at the southern end of L-74N along the south toe and is approximately 1000 feet in length. This section has moderate density vegetation which requires removed from the southern toe for 24 feet or to the water's edge. Mechanical vegetation removal shall commence at the existing mowed vegetation line on the levee

to 24 feet from the levee toe. See site map for approximate location, access for this work is from L74N. The District has estimated 1-acre for these two sites. See Map 1 and Map 2.

Site 3 — **L74E** (6-acres) in the northern section St. Johns Water Management Area consists of moderate density vegetation with an occasional small tree. The levee is approximately 2-miles in length with moderate density vegetation. along the south levee toe. Mechanical vegetation removal shall commence at the existing mowed vegetation line on the levee to 24 feet from the levee toe or water's edge. The District has estimated approximately 6-acres for this site. See Map 1 and Map 2.

Site 4: **AP-1** (3-acres) is in the Fellsmere Water Management Area and consist of heavy to moderate density vegetation with Brazilian Peppers, Willows and Palm Trees. The canal bank is 0.5-miles long and requires unwanted vegetation removal on one slope for approximately 40-feet from the existing mowed vegetation line. Mechanical vegetation removal shall commence at the existing mowed vegetation line on the levee to canal water line. The District has estimated 2.5-acres for this project. See Map 1 and Map 2.

Site 5: **C-231** (~~12~~**17**-acres) is located along the east bank of the Ocklawaha River in Marion County in the Sunnyhill Restoration Area and consist of moderate to low density vegetation with mostly herbaceous vegetation some willows, and an 3-three trees. The levee toe section being mechanically vegetated is approximately 5-miles long and requires unwanted vegetation removal on one slope along the east levee toe for approximately 20-feet from the existing mowed vegetation line. Mechanical vegetation removal shall commence at the existing mowed vegetation line and extend to the far side of the rim ditch, approximately 20-feet. The District has estimated 12-acres for this project. See Map 1 and Map 3.

Site 6: Fellsmere N-Levee (6-acres) is located at the north end of the Fellsmere Water Management Area and consist of moderate density vegetation to with some trees. The levee is 2.5-miles long and requires unwanted vegetation removal on both slopes 10-feet from the existing mowed vegetation line. The total length of both slopes where work is to be performed is 20-feet. Remove any tree greater than 8-inch DBH that is within 10 feet on both sides. Any trees to remain will be marked by the District. Trim all limbs from trees up 15-feet from ground that overhang into the 10-foot clear zone. This section is contiguous with Site-4, AP-1. The District has estimated approximately 6 acres for this mechanical vegetation removal. See Map

Contractor Responsibilities:

- Provide all equipment, materials, fuel, and labor to complete the work within the timeframe provided. The Contractor shall obtain permission to replace pre-approved equipment prior to mobilizing said equipment to the work site.
- Mobilization and demobilization to and from each site. The Contractor may elect to transport equipment to the next location versus walking the equipment. All equipment moves shall be approved by the District.
- Mulch vegetation as defined herein.
- If toes are too wet for equipment, Contractor may use mats or seek the District's approval to work from levee slope prior starting.
- Contractor shall spread all mulched vegetation over work area or as directed by the District.
- Perform joint inspection of completed work with District. Joint inspection must be completed prior to invoice being submitted. Partial invoices may be submitted.
- Properly maintain all equipment. District reserves the right to require Contractor to submit copies of equipment maintenance records, if requested.
- In the event of equipment failure, the Contractor shall replace the on-site equipment with similar or better equipment within 72 hours of the breakdown if the Contractor cannot repair and return the equipment to active service within the 72-hour timeframe.

EXHIBIT 2 - QUOTE COST SCHEDULE
 (Note: This page must be submitted with response.)

DUE NO LATER THAN 3:00 PM, THURSDAY April 23, 2020 - RESPONSES SHALL BE SUBMITTED TO THE PROCUREMENT SPECIALIST AS IDENTIFIED ON THE FIRST PAGE OF THIS REQUEST.

LEVEE	ACREAGE	COST PER ACRE	TOTAL COST
L-74N	N/A	N/A	N/A
L-74E	N/A	N/A	N/A
L-74W	N/A	N/A	N/A
AP-1	3	\$	\$
<u>Fellsmere N-Levee</u>	6	\$	\$
C-231	17	\$	\$
TOTALS:		\$	\$

I HEREBY ACKNOWLEDGE, as Authorized Representative for the Respondent, that I have fully read and understand all terms and conditions as set forth in this quotation, and upon award of such quotation, shall fully comply with such terms and conditions.

Acknowledgment is hereby made of the following addenda (identified by number) received:

Addendum No.	Date	Addendum No.	Date
1	_____	_____	_____
2	_____	_____	_____
3	_____	_____	_____

RESPONDENT (FIRM NAME)

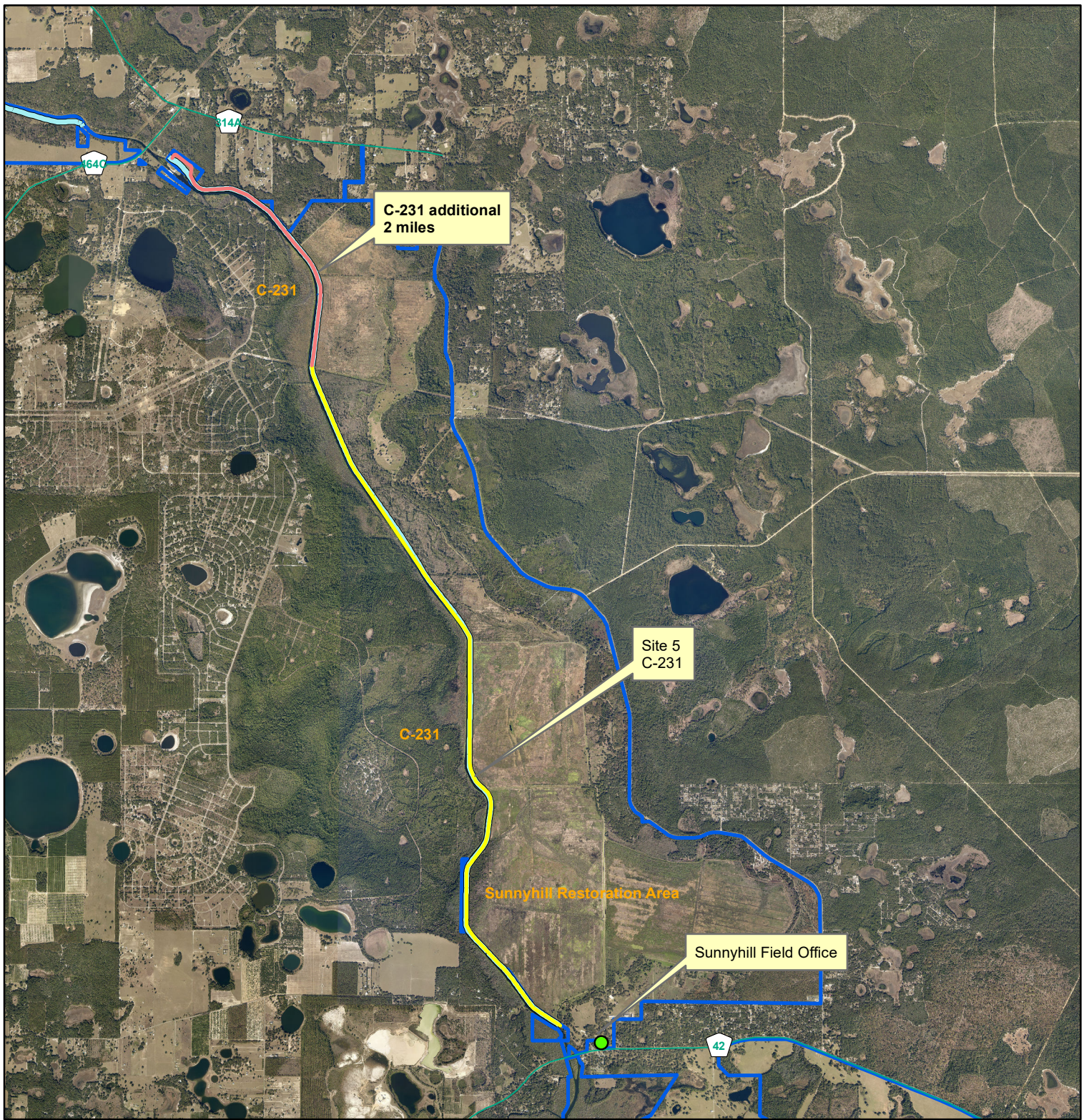
ADDRESS

SIGNATURE

TYPED NAME & TITLE

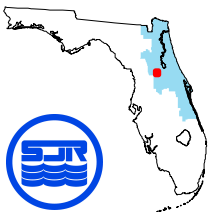
TELEPHONE NUMBER

EMAIL ADDRESS



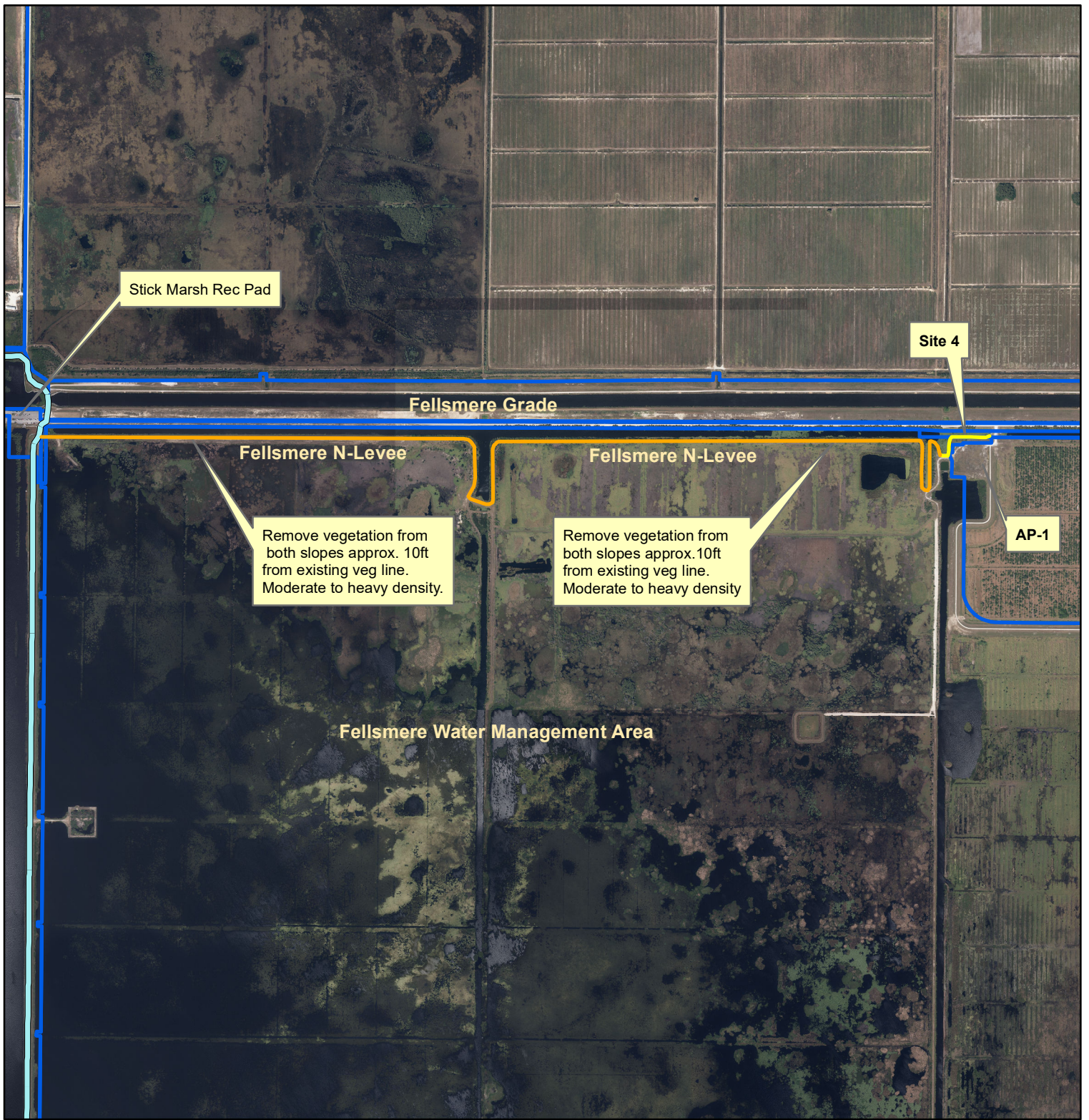
Mechanical Vegetation Project

C-231 Additional 2-Mile Section

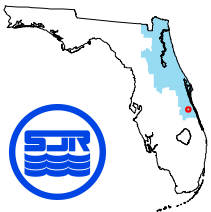


2 1 0 2 Miles

1 = 60000



MECHANICAL VEGETATION PROJECT Site 4 -- AP-1 & Fellsmere N-Levee



0.8 0.4 0 0.8 Miles



1 = 20000