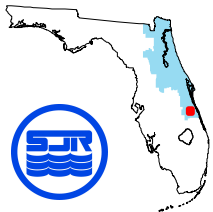


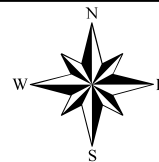
Mechanical Vegetation Removal Project Map



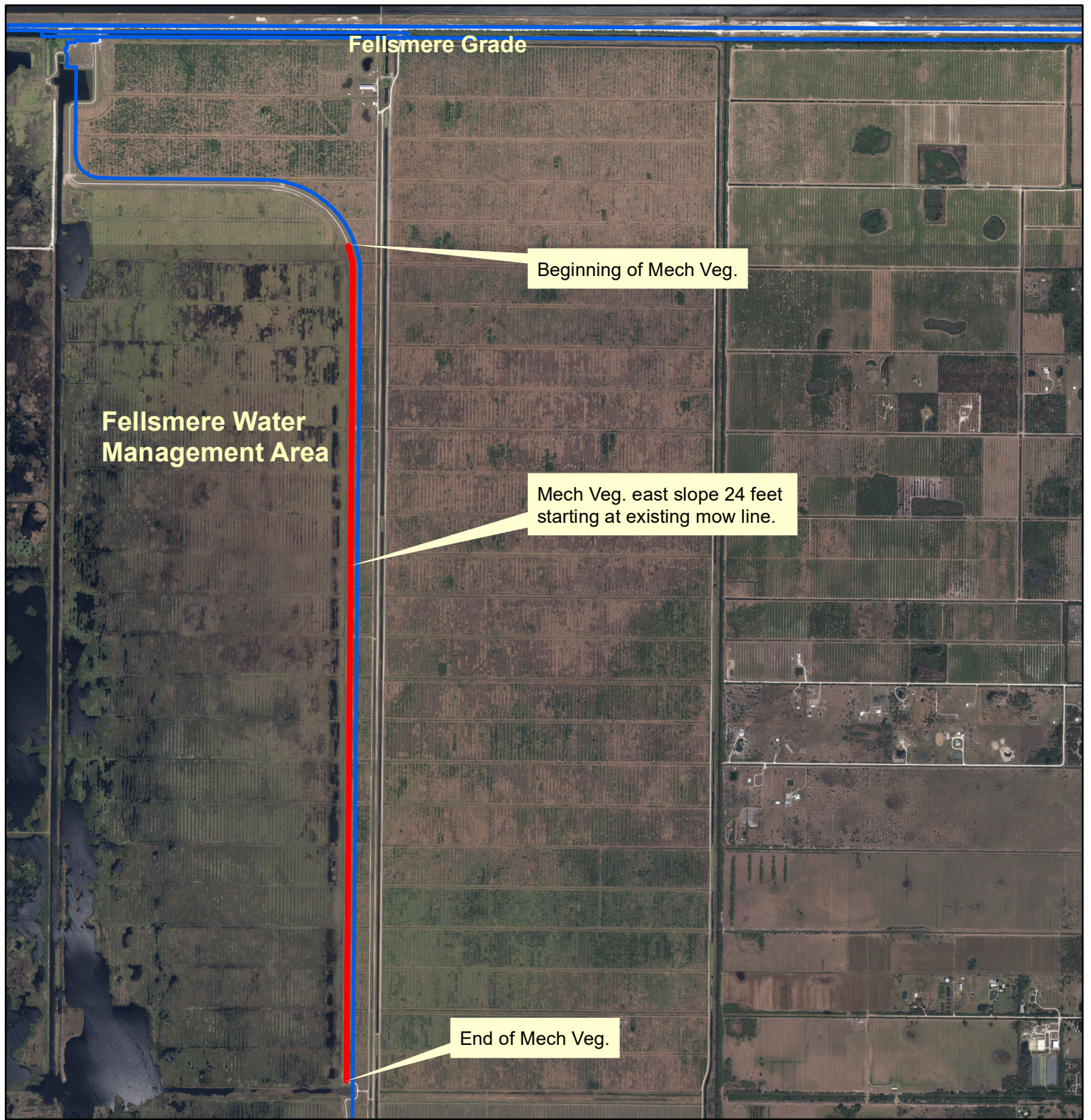
0.6 0.3 0 0.6 Miles



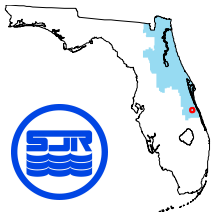
1 = 74552



The St. Johns River Water Management District prepares and uses this information for its own purposes and this information may not be suitable for other purposes. This information is provided as is. Further documentation of this data can be obtained by contacting: St. Johns River Water Management District, Geographic Information Systems, Program Management, P.O. Box 1429, 4049 Reid Street Palatka, Florida 32178-1429 Tel: (386) 329-4500.



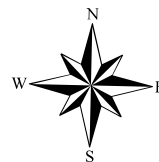
Mechanical Vegetation Removal Site 1- Fellsmere East Levee



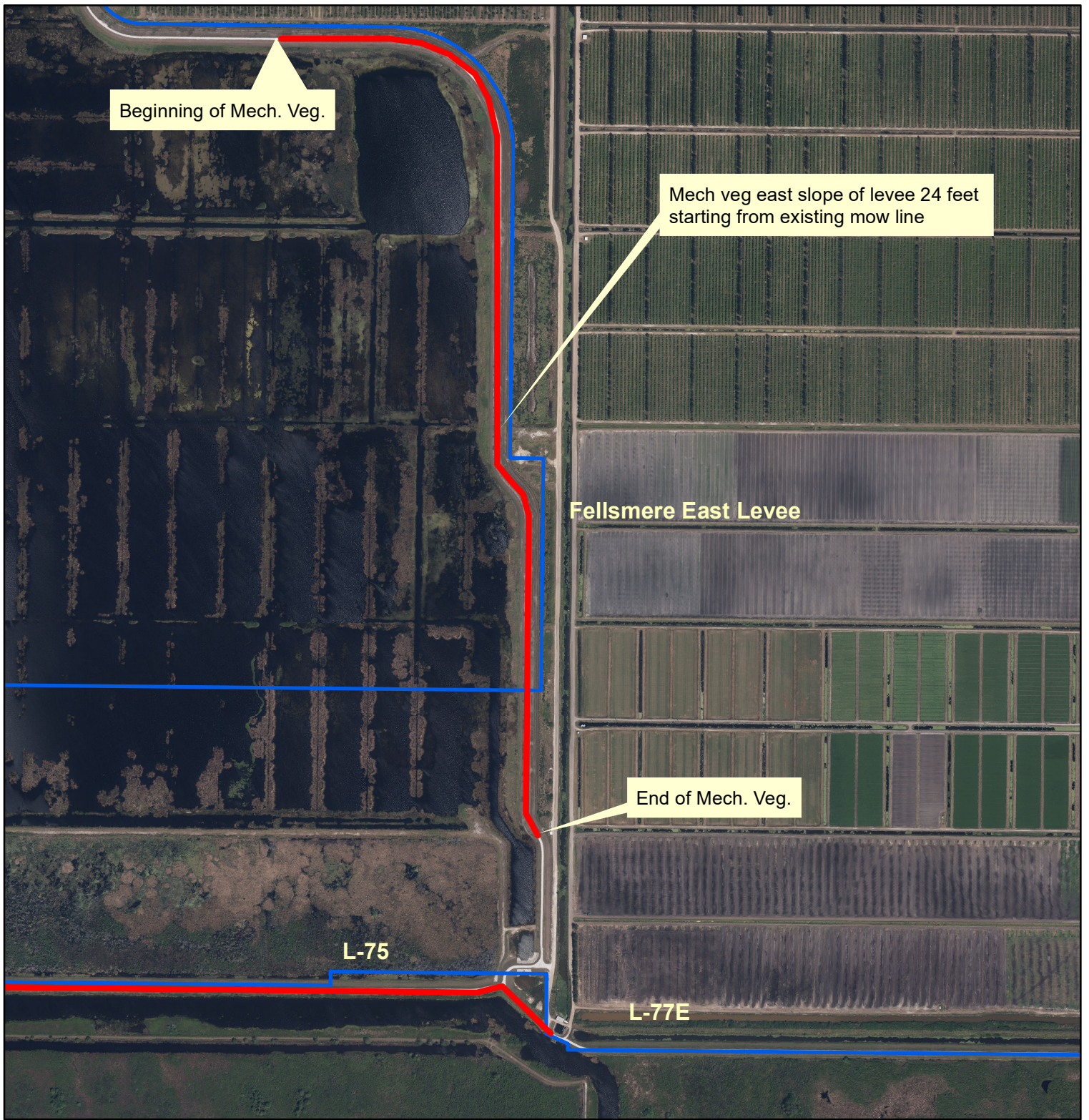
0.20.1 0 0.2 Miles



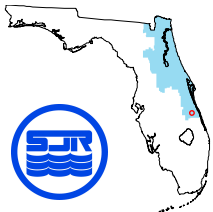
1 = 26183



The St. Johns River Water Management District prepares and uses this information for its own purposes and this information may not be suitable for other purposes. This information is provided as is. Further documentation of this data can be obtained by contacting: St. Johns River Water Management District, Geographic Information Systems, Program Management, P.O. Box 1429, 4049 Reid Street Palatka, Florida 32178-1429 Tel: (386) 329-4500.



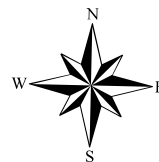
Mechanical Vegetation Removal Site 2- Fellsmere East Levee



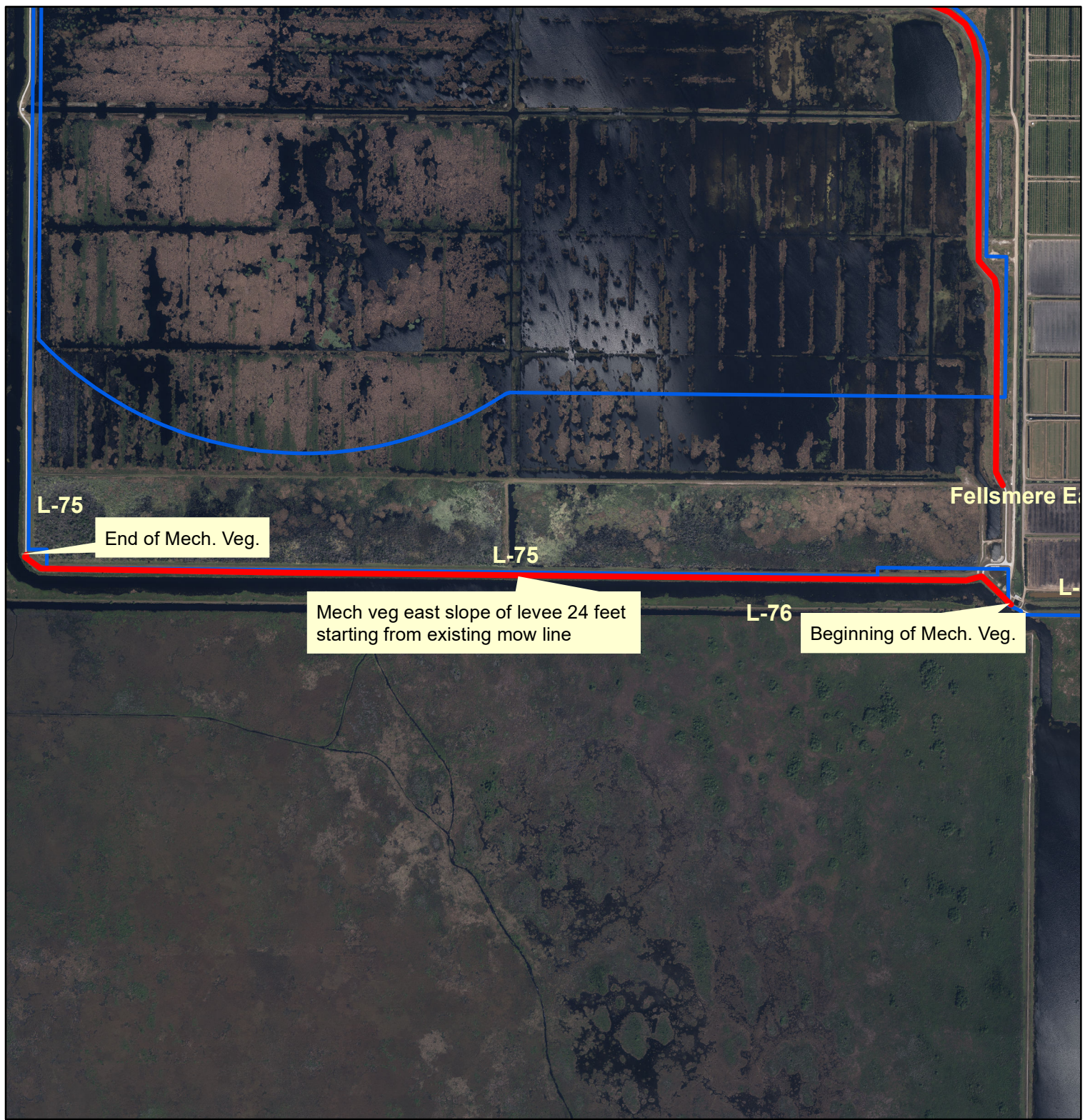
0.08.04 0 0.08 Miles



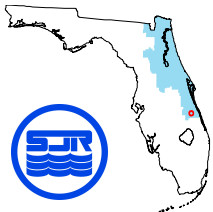
1 = 10981



The St. Johns River Water Management District prepares and uses this information for its own purposes and this information may not be suitable for other purposes. This information is provided as is. Further documentation of this data can be obtained by contacting: St. Johns River Water Management District, Geographic Information Systems, Program Management, P.O. Box 1429, 4049 Reid Street Palatka, Florida 32178-1429 Tel: (386) 329-4500.



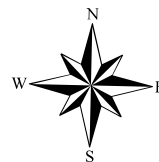
Mechanical Vegetation Removal Site 3- L-75



0.050 0.1 Miles



1 = 18110



The St. Johns River Water Management District prepares and uses this information for its own purposes and this information may not be suitable for other purposes. This information is provided as is. Further documentation of this data can be obtained by contacting: St. Johns River Water Management District, Geographic Information Systems, Program Management, P.O. Box 1429, 4049 Reid Street Palatka, Florida 32178-1429 Tel: (386) 329-4500.