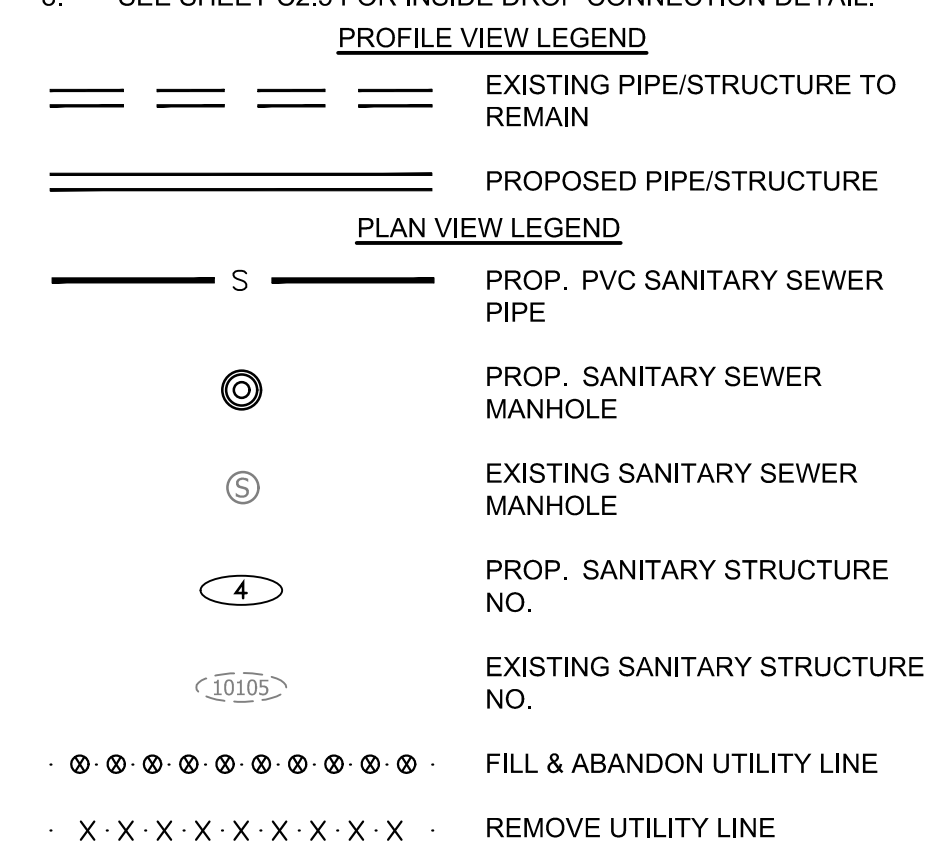


FOR SANITARY CONST. ONLY

- NOTES:**
- PROFILE STATIONING ALONG CENTERLINE OF PIPE
  - SEE SERIES 10 FOR FULL UTILITY NETWORK PLAN VIEWS.
  - CONTRACTOR TO MAINTAIN POSITIVE DRAINAGE THROUGHOUT THE PROJECT LIMITS TO THE EXTENT POSSIBLE AT ALL TIMES. STORM/SANITARY SEWER SHALL BE INSTALLED AND SEQUENCED TO MINIMIZE DOWN TIME REQUIRED FOR TIE-IN OR CUT-OVER OPERATIONS. SHOULD PUMP-AROUNDS BE REQUIRED TO COMPLETE STORM OR SANITARY SEWER INSTALLATIONS, THEY WILL BE INCIDENTAL TO THE COST OF PIPE AND STRUCTURE INSTALLATION.
  - CONTRACTOR TO FIELD VERIFY LOCATION AND ELEVATION OF EXISTING UNDERGROUND UTILITIES ADJACENT TO OR CROSSING PROPOSED STORM SEWER PIPE AND STRUCTURES PRIOR TO INSTALLATION.
  - OFFSET OF EXIST. FIBER LINE AND LIGHTING LINE MAY BE REQUIRED FOR PROPOSED IMPROVEMENTS. SEE DETAIL SHEET C2.1.
  - WHERE MINIMUM VERTICAL CLEARANCES BETWEEN UTILITIES CANNOT BE MET, CONTRACTOR TO INSTALL CONCRETE PIERS AND/OR REINFORCED CONCRETE CRADLE PER ARLINGTON COUNTY STANDARD DRAWING M-7.0.
  - DESIGN ASSUMES THAT THE PROPOSED SANITARY SYSTEM IS GENERALLY INSTALLED PRIOR TO OTHER UTILITIES TO MITIGATE CONFLICTS.
  - SEE SHEET C2.5 FOR INSIDE DROP CONNECTION DETAIL.



**ARLINGTON VIRGINIA**

DEPARTMENT OF ENVIRONMENTAL SERVICES

Facilities & Engineering Division  
Engineering Bureau  
2100 Clarendon Boulevard, Suite 813  
Arlington, VA 22201  
Phone: 703.228.3629  
Fax: 703.228.3606

**Kimley»Horn**  
Kimley-Horn and Associates, Inc.

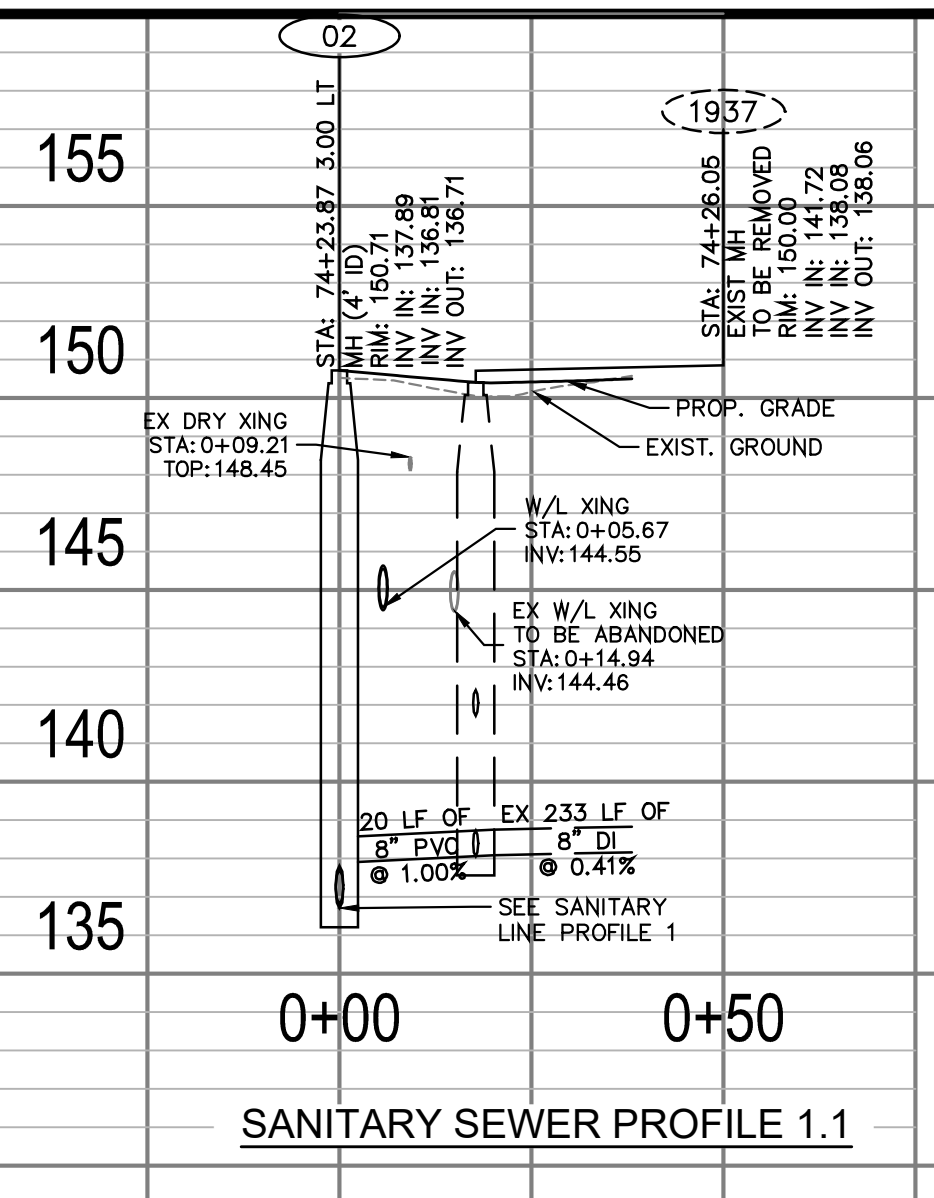
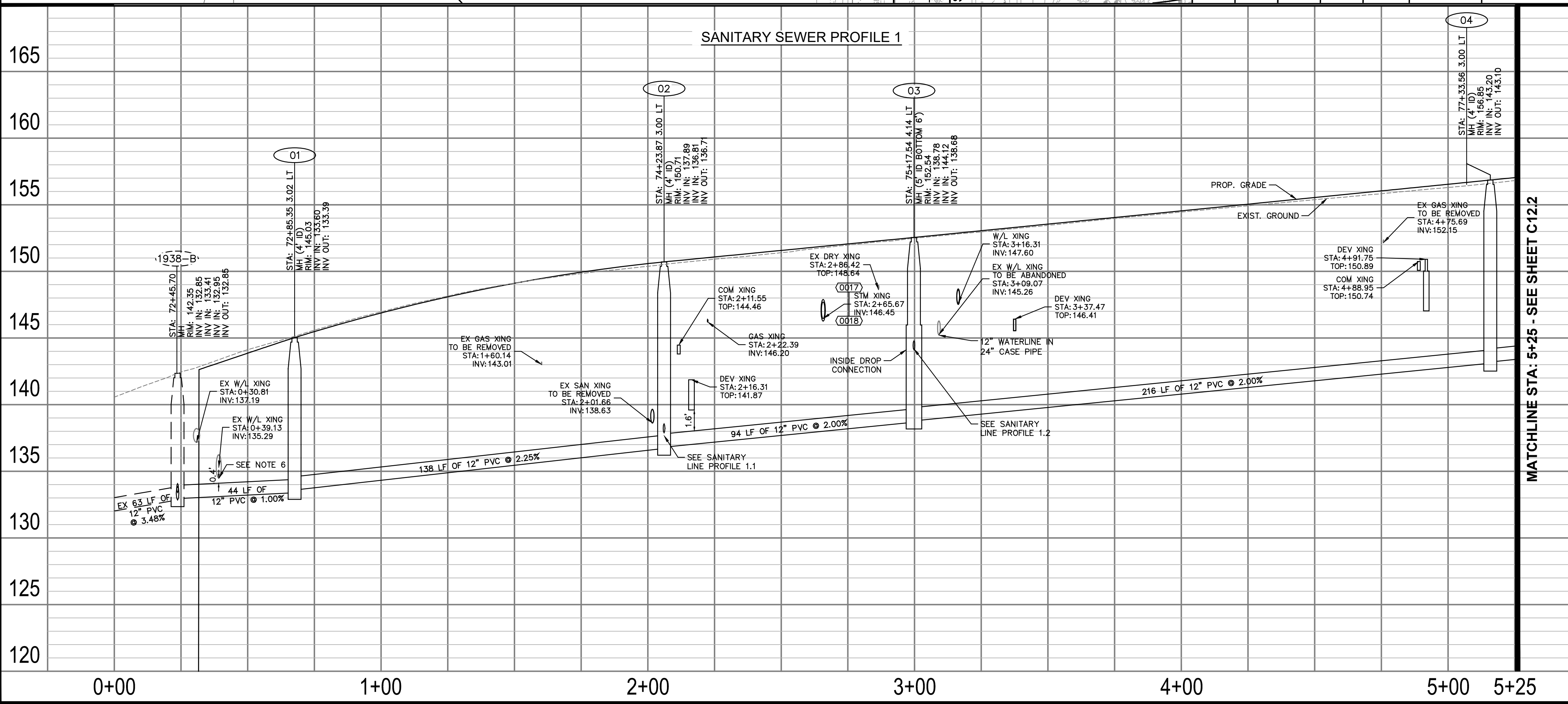
© 2022 KIMLEY-HORN AND ASSOCIATES, INC.  
11400 Commerce Park Drive, Suite 400  
Reston, Virginia 20191  
Phone: 703-874-1300  
Fax: 703-874-1300

Seal

Approvals	Date
Design Team Engineer Supervisor	
Construction Management Supervisor	
Water, Sewer, Streets Bureau Chief	
Transportation Director	
Project Manager	

Revisions	Date

Designed: MAT  
Drawn: MAT  
Checked: EJD  
Miss Utility Transmittal #:  
  
Filename: 010073-C-SSWR.dwg  
Path: S:\2022\ARLINGTON VIRGINIA\11/02/2022\Columbia Pike Multimodal\Production\Drawings\Platbooks  
Plotted: November 02, 2022  
Plotted by: Ted.DeLio



ARLINGTON COUNTY, VIRGINIA  
DEPARTMENT OF ENVIRONMENTAL SERVICES

SANITARY SEWER PLAN AND PROFILES  
COLUMBIA PIKE - ROUTE 244  
COLUMBIA PIKE - MULTIMODAL STREET IMPROVEMENTS  
SEGMENT C  
STA. 72+22 TO STA. 77+43

SCALE: HOR. 1" = 25' VERT. 1" = 5' SHEET: C12.1 of C12.4

**ARLINGTON VIRGINIA**

DEPARTMENT OF ENVIRONMENTAL SERVICES

11/15/2022  
APPROVAL DATE

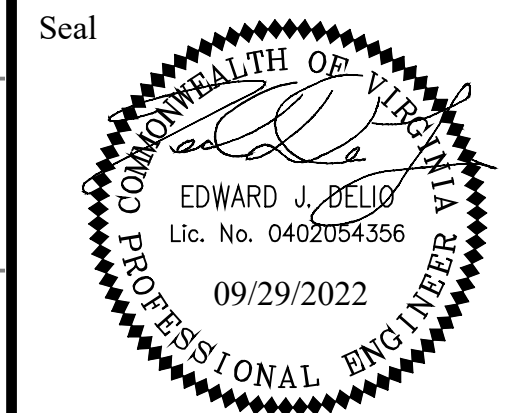












Approvals	Date
Design Team Engineer Supervisor	
Construction Management Supervisor	
Water, Sewer, Streets Bureau Chief	
Transportation Director	
Project Manager	

Revisions	Date

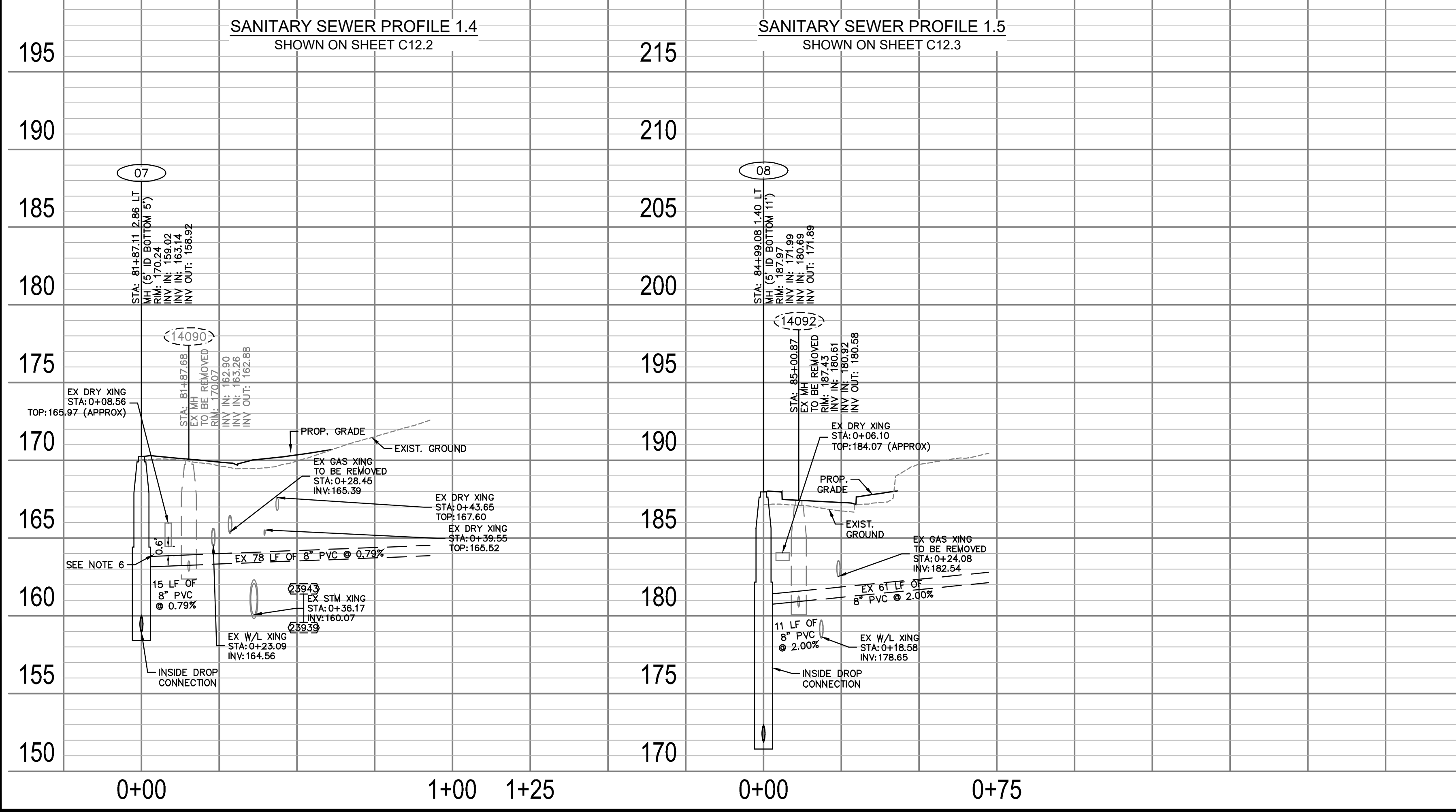
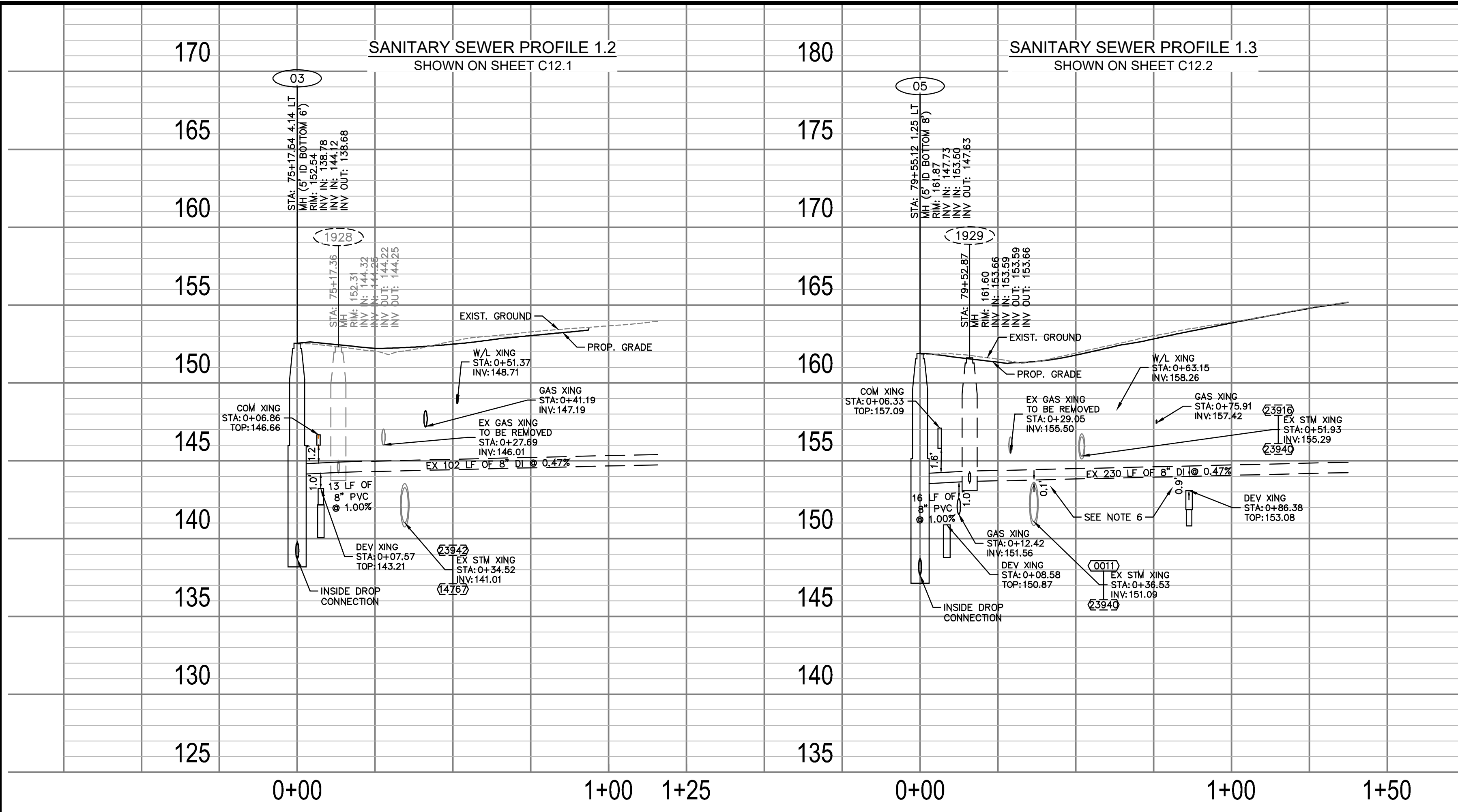
Designed: MAT  
 Drawn: MAT  
 Checked: EJD  
 Miss Utility Transmittal #:

Filename: 010073-C-SSWR.dwg  
 Path: C:\Users\jbell\OneDrive\Documents\010073-C-SSWR.dwg  
 Plotted: September 29, 2022  
 Plotted by: Miguel Tyshing

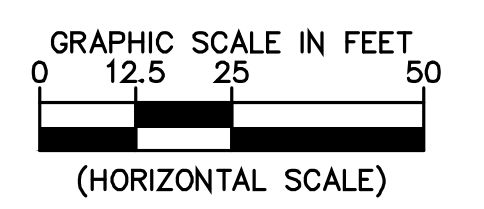
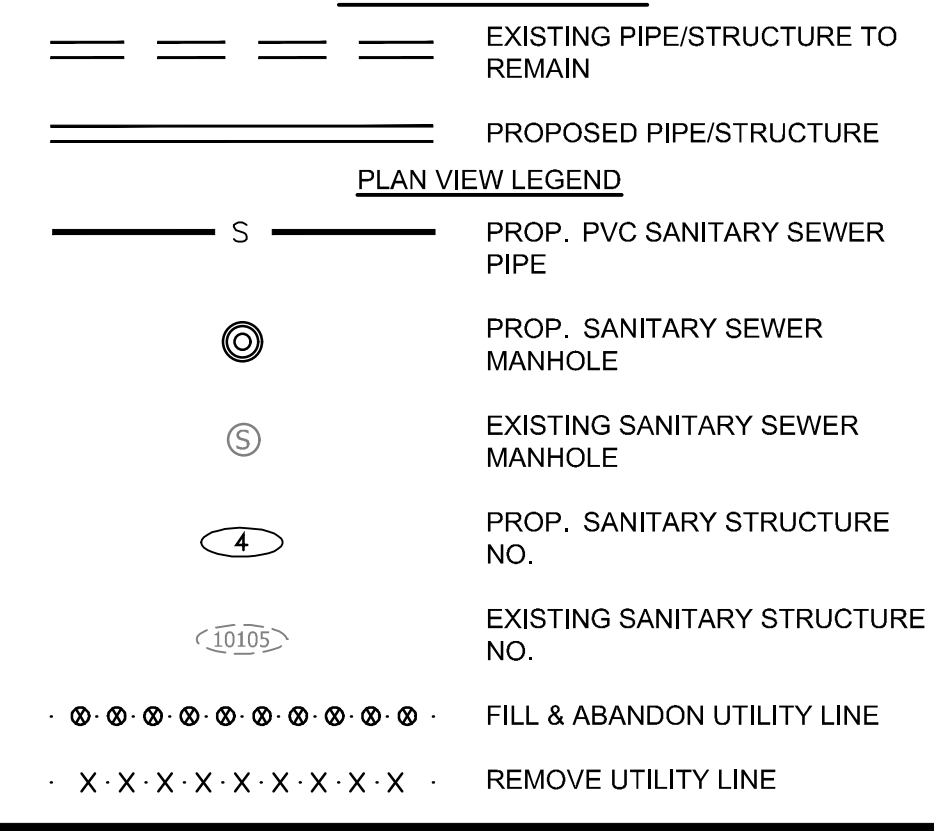
ARLINGTON COUNTY, VIRGINIA  
 DEPARTMENT OF ENVIRONMENTAL SERVICES

**SANITARY SEWER PLAN AND PROFILES**  
 COLUMBIA PIKE - ROUTE 244  
 COLUMBIA PIKE - MULTIMODAL STREET IMPROVEMENTS  
 SEGMENT C

SCALE: HOR. 1" = 25' VERT. 1" = 5'	SHEET: C12.4 of C12.4
------------------------------------	-----------------------



- NOTES:**
- PROFILE STATIONING ALONG CENTERLINE OF PIPE
  - SEE SERIES 10 FOR FULL UTILITY NETWORK PLAN VIEWS.
  - CONTRACTOR TO MAINTAIN POSITIVE DRAINAGE THROUGHOUT THE PROJECT LIMITS TO THE EXTENT POSSIBLE AT ALL TIMES. STORM/ SANITARY SEWER SHALL BE INSTALLED AND SEQUENCED TO MINIMIZE DOWN TIME REQUIRED FOR TIE-IN OR CUT-OVER OPERATIONS. SHOULD PUMP-AROUNDS BE REQUIRED TO COMPLETE STORM OR SANITARY SEWER INSTALLATIONS, THEY WILL BE INCIDENTAL TO THE COST OF PIPE AND STRUCTURE INSTALLATION.
  - CONTRACTOR TO FIELD VERIFY LOCATION AND ELEVATION OF EXISTING UNDERGROUND UTILITIES ADJACENT TO OR CROSSING PROPOSED STORM SEWER PIPE AND STRUCTURES PRIOR TO INSTALLATION.
  - OFFSET OF EXIST. FIBER LINE AND LIGHTING LINE MAY BE REQUIRED FOR PROPOSED IMPROVEMENTS. SEE DETAIL SHEET C2.1.
  - WHERE MINIMUM VERTICAL CLEARANCES BETWEEN UTILITIES CANNOT BE MET, CONTRACTOR TO INSTALL CONCRETE PIERS AND/OR REINFORCED CONCRETE CRADLE PER ARLINGTON COUNTY STANDARD DRAWING M-7.0.
  - DESIGN ASSUMES THAT THE PROPOSED SANITARY SYSTEM IS GENERALLY INSTALLED PRIOR TO OTHER UTILITIES TO MITIGATE CONFLICTS.
  - SEE SHEET C2.5 FOR INSIDE DROP CONNECTION DETAIL.



**FOR SANITARY CONST. ONLY**

























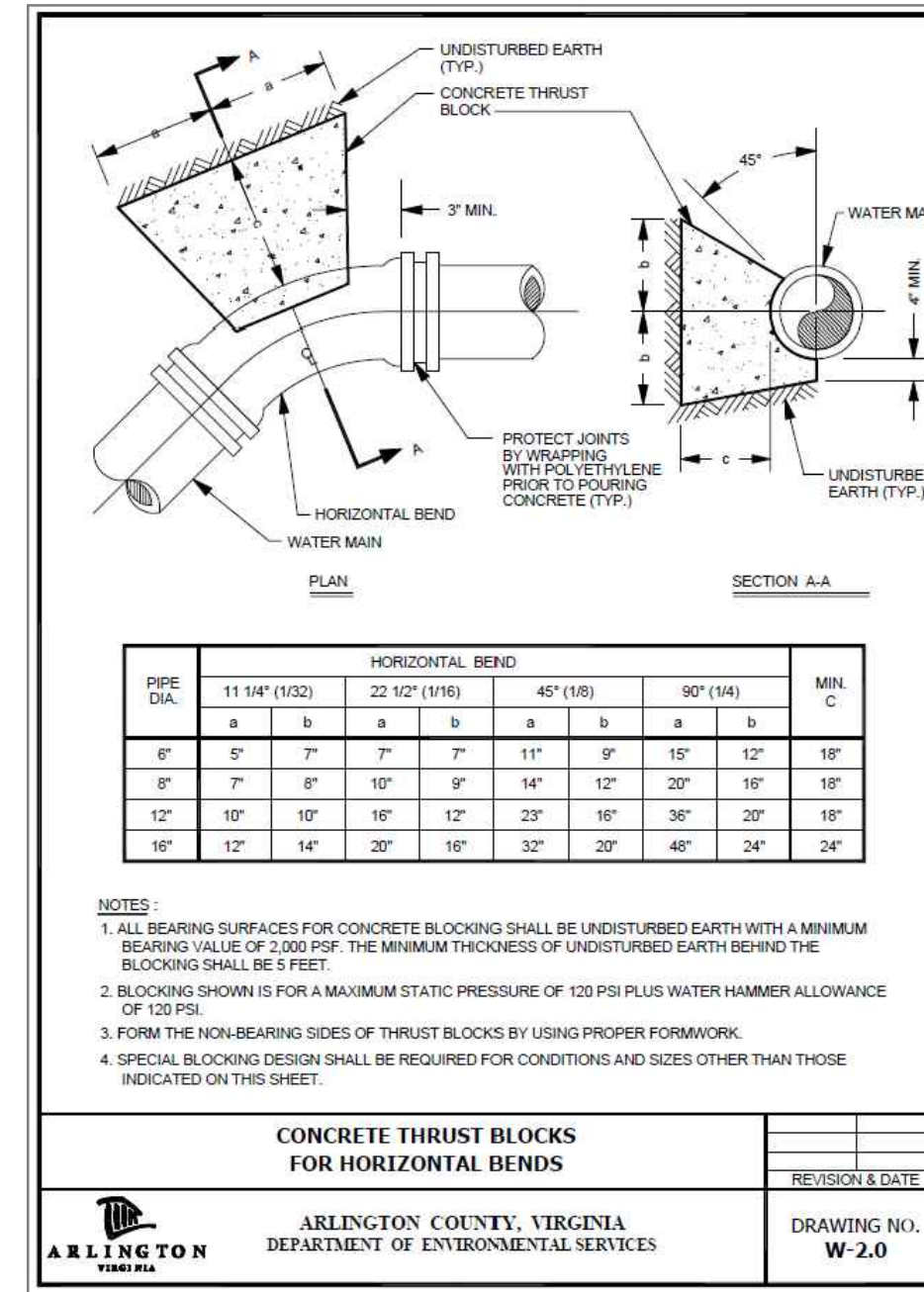






WATERLINE RESTRAINT LENGTHS

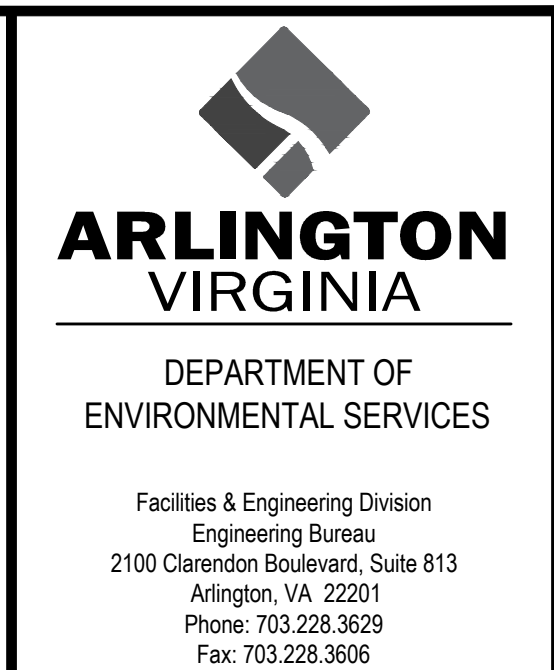
Site Name	Fitting Type	Pipe Material	Soil Type	Safety Factor	Trench Type	Depth of Bury	Test Pressure	Nominal Size	Bend Angle	Branch Size	Length Along Run	Reduced Size	Lowside Depth	Restraint Length	Restraint Length 2	Site Notes
Waterline 1																
0+23.97	Horizontal Bend	Ductile Iron	GP	1.5	5	4	250	12	45					15 ft.		
0+38.76	Horizontal Bend	Ductile Iron	GP	1.5	5	4	250	12	45					15 ft.		
1+69.16	Tee	Ductile Iron	GP	1.5	5	4	250	12		8	11					
2+34.43	Vertical Offset	Ductile Iron	GP	1.5	5	4	250	12	45					6 34 ft.	10 ft.	
2+82.27	Tee	Ductile Iron	GP	1.5	5	4	250	12		12	18			8 ft.		
4+05.79	Tee	Ductile Iron	GP	1.5	5	4	250	12		4	18			1 ft.		
4+09.02	Vertical Offset	Ductile Iron	GP	1.5	5	4	250	12	22.5					5 17 ft.	6 ft.	
4+69.31	Tee	Ductile Iron	GP	1.5	5	4	250	12		6	18			1 ft.		
6+81.37	Tee	Ductile Iron	GP	1.5	5	4	250	12		8	18			1 ft.		
6+88.11	Tee	Ductile Iron	GP	1.5	5	4	250	12		8	18			1 ft.		
7+02.62	Vertical Offset	Ductile Iron	GP	1.5	5	4	250	12	45					7 34 ft.	9 ft.	
8+23.65	Vertical Offset	Ductile Iron	GP	1.5	5	4	250	12	45					6 34 ft.	10 ft.	
8+33.73	Tee	Ductile Iron	GP	1.5	5	4	250	12		6	18			1 ft.		
9+16.79	Tee	Ductile Iron	GP	1.5	5	4	250	12		6	18			1 ft.		
9+48.51	Tee	Ductile Iron	GP	1.5	5	4	250	12		6	18			1 ft.		
11+15.68	Tee	Ductile Iron	GP	1.5	5	4	250	12		8	18			1 ft.		
11+77.22	Tee	Ductile Iron	GP	1.5	5	4	250	12		8	18			1 ft.		
14+74.83	Tee	Ductile Iron	GP	1.5	5	3	250	12		6	18			1 ft.		
Waterline 1.1																
0+00.00	Tee	Ductile Iron	GP	1.5	5	4	250	12		8	11			1 ft.		
0+12.38	Vertical Offset	Ductile Iron	GP	1.5	5	4	250	8	45					7 24 ft.	6 ft.	
0+20.53	Vertical Offset	Ductile Iron	GP	1.5	5	4	250	8	45					7 24 ft.	6 ft.	
0+47.11	Tee	Ductile Iron	GP	1.5	5	4	250	8		6 none						
Waterline 1.1.1																
0+00.00	Tee	Ductile Iron	GP	1.5	5	4	250	8		6 none						
0+21.52	Dead End	Ductile Iron	GP	1.5	5	4	250	6						44 ft.		
Waterline 1.1.2																
0+00.00	Tee	Ductile Iron	GP	1.5	5	4	250	12		6	18			1 ft.		
0+05.55	Vertical Offset	Ductile Iron	GP	1.5	5	3	250	6	22.5					4 12 ft.	4 ft.	
0+21.24	Dead End	Ductile Iron	GP	1.5	5	3	250	6						44 ft.		
Waterline 1.2																
0+00.00	Tee	Ductile Iron	GP	1.5	5	4	250	12		12	18			8 ft.		
0+55.69	Tee	Ductile Iron	GP	1.5	5	4	250	12		6	18			1 ft.		
0+83.19	Horizontal Bend	Ductile Iron	GP	1.5	5	4	250	12	45					15 ft.		
0+93.81	Horizontal Bend	Ductile Iron	GP	1.5	5	4	250	12	45					15 ft.		
Waterline 1.2.1																
0+00.00	Tee	Ductile Iron	GP	1.5	5	4	250	12		6	18			1 ft.		
0+25.36	Dead End	Ductile Iron	GP	1.5	5	4	250	6						44 ft.		
Waterline 1.3																
0+00.00	Tee	Ductile Iron	GP	1.5	5	3.5	250	12		4	18			1 ft.		
Waterline 1.4																
0+00.00	Tee	Ductile Iron	GP	1.5	5	4	250	12		8	18			1 ft.		
0+04.18	Vertical Offset	Ductile Iron	GP	1.5	5	4	250	8	22.5					7 24 ft.	6 ft.	
0+45.54	Vertical Offset	Ductile Iron	GP	1.5	5	3	250	8	22.5					4 31 ft.	11 ft.	
1+41.06	Horizontal Bend	Ductile Iron	GP	1.5	5	4	250	8	45					7 ft.		
1+61.26	Horizontal Bend	Ductile Iron	GP	1.5	5	4	250	8	45					7 ft.		
Waterline 1.6																
0+00.00	Tee	Ductile Iron	GP	1.5	5	4	250	12		8	18			1 ft.		
0+46.03	Tee	Ductile Iron	GP	1.5	5	4	250	8		6	16			1 ft.		
0+79.62	Horizontal Bend	Ductile Iron	GP	1.5	5	4	250	8	45					14 ft.		
1+04.06	Horizontal Bend	Ductile Iron	GP	1.5	5	4	250	8	45					14 ft.		
Waterline 1.6.1																
0+00.00	Tee	Ductile Iron	GP	1.5	5	4	250	8		6	16			1 ft.		
0+16.52	Dead End	Ductile Iron	GP	1.5	5	4	250	6						44 ft.		
Waterline 1.7																
0+00.00	Tee	Ductile Iron	GP	1.5	5	4	250	12		6	18			1 ft.		
0+38.03	Dead End	Ductile Iron	GP	1.5	5	4	250	6						44 ft.		
Waterline 1.8																
0+00.00	Tee	Ductile Iron	GP	1.5	5	5	250	12		6	18			1 ft.		
0+09.98	Vertical Offset	Ductile Iron	GP	1.5	5	5	250	6	45					8 15 ft.	4 ft.	
0+28.68	Vertical Offset	Ductile Iron	GP	1.5	5	5	250	6	45					8 15 ft.	4 ft.	
Waterline 1.9																
0+00.00	Tee	Ductile Iron	GP	1.5	5	4	250	12		8	18			1 ft.		
0+07.77	Vertical Offset	Ductile Iron	GP	1.5	5	4	250	8	22.5					6 24 ft.	7 ft.	
0+27.65	Vertical Offset	Ductile Iron	GP	1.5	5	5	250	8	22.5					6 20 ft.	7 ft.	
Waterline 1.10																
0+00.00	Tee	Ductile Iron	GP	1.5	5	4	250	12		8	18			1 ft.		
Waterline 1.11																
0+00.00	Tee	Ductile Iron	GP	1.5	5	3	250	12		6	18			1 ft.		
0+23.88	Vertical Offset	Ductile Iron	GP	1.5	5	3	250	6	22.5					4 12 ft.	4 ft.	
Waterline 1.12																
0+00.00	Tee	Ductile Iron	GP	1.5	5	4	250	12		8	18			1 ft.		
0+26.45	Horizontal Bend	Ductile Iron	GP	1.5	5	4	250	8	45					8 ft.		



NOTES: ARLINGTON COUNTY PREFERS TIE RODS TO BE INSTALLED FROM THE TEE TO THE FITTING THAT TURNS UP TO THE FIRE HYDRANT REGARDLESS OF LENGTH PER ARLINGTON COUNTY STANDARDS. AN ACCEPTABLE ALTERNATIVE IS TO INSTALL TIE RODS BETWEEN THE TEE ON THE MAIN AND THE VALVE, THEN INSTALL MEGA-LUGS BETWEEN THE VALVE AND THE FITTING THAT TURNS UP TO THE FIRE HYDRANT. IF THIS ALTERNATE METHOD IS USED FOR FIRE HYDRANT INSTALLATIONS, THRUST BLOCKS ARE REQUIRED 1) BEHIND THE TEE AT THE MAIN, AND 2) BEHIND THE FITTING TURNING UP AT THE HYDRANT PER ARLINGTON STANDARDS.

DETAIL: THRUST BLOCKS

Local Review Program – Project Report			
Project Name:	Columbia Pike, Segment C		
Building Type:	N/A		
Office	N/A	sq. ft.	
Retail	N/A	sq. ft.	
Residential	N/A	number of units	
Hotel	N/A	number of units	
Other (type: )	N/A	sq. ft.	
<b>Water Main</b>			
New pipe information (excluding Fireline length)			
Length of water main by size	Size:	6	Length: 175'
	Size:	8	Length: 428'
	Size:	12	Length: 1694'
New Fire Hydrants	Number:	6	
Blow-offs	Number:	n/a	
<b>Abandoned pipe and appurtenance information</b>			
Length of water main by size	Size:	6	Length: 255'
	Size:	8	Length: 115'
	Size:	12	Length: 2415'
Fire Hydrants	Number:	5	
Blow-offs	Number:	n/a	
<b>Water Meters and Connections</b>			
Residential (sfd)	Number:		Size:
Multi-family	Number:		Size:
Commercial	Number:		Size:
Institutional	Number:		Size:
Industrial	Number:		Size:
Irrigation	Number:		Size:
Fireline (Connections)	Number:		Size:
Other (type: )	Number:		Size:
<b>Sanitary Sewer Main</b>			
New pipe information			
Length of sanitary sewer by size	Size:	8"	Length: 25'
	Size:	8"	Length: 72'
	Size:	12"	Length: 1298'
Number of MHs	Number:	9	
<b>Abandoned pipe information</b>			
Length of sanitary sewer by size	Size:	8"	Length: 16'
	Size:	8"	Length: 1600'
	Size:	12"	Length: 190'
Number of MHs	Number:	10	
<b>Interceptor Information</b>			
Type:	Grease		Sand/oil:
			Both:
Location:	Inside:		Outside:
Size:	Size:		
New Bldg:	Yes		No
Retrofit:	Yes		No



Facilities & Engineering Division  
 Engineering Bureau  
 2100 Clarendon Boulevard, Suite 813  
 Arlington, VA 22201  
 Phone: 703.228.3629  
 Fax: 703.228.3606

