

ARLINGTON VIRGINIA

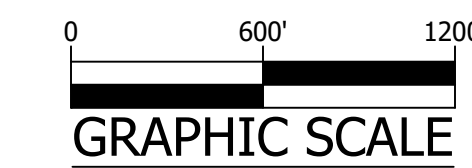
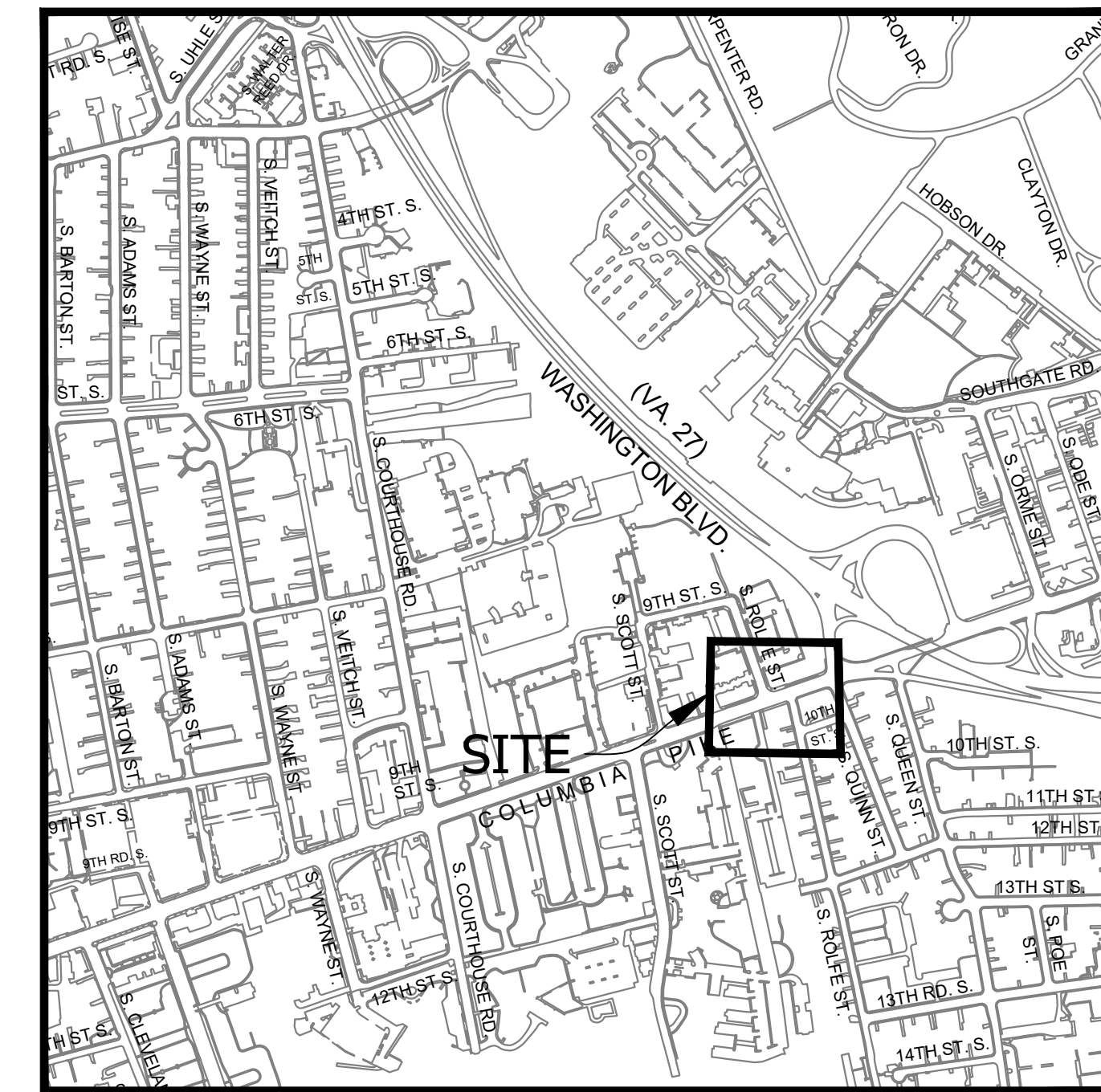
ENGINEER
DEPARTMENT OF ENVIRONMENTAL SERVICES

FACILITIES & ENGINEERING DIVISION
ENGINEERING BUREAU
2100 CLARENDON BOULEVARD, SUITE 813
ARLINGTON, VA 22201
PHONE: 703.228.3629 FAX: 703.228.3606
WWW.ARLINGTONVA.US

OWNER
DES/DTD/PLAN

CONTRACTOR
TO BE DETERMINED

LOCATION MAP



30% Design Plan

CONSTRUCTION DRAWINGS FOR:

COLUMBIA PIKE AND S ROLFE ST INTERSECTION REALIGNMENT

PROJECT NUMBER: DS41

GENERAL NOTES:

GENERAL CONSTRUCTION NOTES

- ALL CONSTRUCTION WORK FOR THIS PROJECT SHALL CONFORM TO THE ARLINGTON COUNTY DEPARTMENT OF ENVIRONMENTAL SERVICES, CONSTRUCTION STANDARDS AND SPECIFICATIONS, AND WHERE APPLICABLE THE VIRGINIA DEPARTMENT OF TRANSPORTATION (VDOT) ROAD AND BRIDGE SPECIFICATIONS, AND ROAD AND BRIDGE STANDARDS. THE LATEST EDITIONS OF EACH RELEVANT MANUAL SHALL BE USED.
- ALL CONSTRUCTION AND WORK ACTIVITIES SHALL COMPLY WITH THE VIRGINIA WORK AREA PROTECTION MANUAL AND ALL OTHER RELEVANT WORK SAFETY REQUIREMENTS, LATEST EDITIONS.
- THE CONTRACTOR SHALL IMMEDIATELY NOTIFY THE PROJECT OFFICER OF ANY DISCREPANCIES BETWEEN ACTUAL FIELD CONDITIONS AND THE APPROVED PLANS.
- THE CONTRACTOR SHALL CONTACT "MISS UTILITY" AT 811 FOR MARKING THE LOCATIONS OF EXISTING UNDERGROUND UTILITIES (i.e. WATER, SEWER, GAS, TELEPHONE, ELECTRIC, AND CABLE TV) AT LEAST 72 HOURS PRIOR TO ANY EXCAVATION OR CONSTRUCTION. THE CONTRACTOR IS REQUIRED TO IDENTIFY AND PROTECT ALL OTHER UTILITY LINES FOUND IN THE WORK SITE AREA BELONGING TO OTHER OWNERS THAT ARE NOT MEMBERS OF "MISS UTILITY". PRIVATE WATER, SEWER AND GAS LATERALS WILL NOT BE MARKED BY MISS UTILITY OR THE COUNTY. THE CONTRACTOR SHALL LOCATE AND PROTECT THESE SERVICES DURING CONSTRUCTION.
- THE CONTRACTOR SHALL BE RESPONSIBLE FOR LAYING OUT THE WORK AND SHALL RETAIN A PROFESSIONAL LAND SURVEYOR LICENSED IN THE COMMONWEALTH OF VIRGINIA TO PROVIDE ALL NECESSARY CONSTRUCTION LAYOUTS AND ESTABLISH ALL CONTROL LINES, GRADES, AND ELEVATION DURING CONSTRUCTION. THE CONTRACTOR SHALL SUBMIT A COPY OF ALL CUT SHEETS FOR REVIEW, PER THE SPECIFICATIONS. THE COST OF ALL NECESSARY SURVEYING SERVICES SHALL BE CONSIDERED INCIDENTAL TO THE WORK AND, UNLESS OTHERWISE SPECIFIED, THE COST SHALL BE INCORPORATED INTO THE COSTS FOR RELEVANT ITEMS.
- THE LOCATION OF ALL EXISTING UTILITIES SHOWN ON THESE PLANS ARE FROM BEST AVAILABLE RECORDS AND SHALL BE CONSIDERED TO BE APPROXIMATE. WHEN CONSTRUCTION ACTIVITY REACHES IN PROXIMITY TO EXISTING UTILITIES, THE TRENCH(ES) SHALL BE OPENED A SUFFICIENT DISTANCE AHEAD OF THE WORK OR TEST PITS SHALL BE MADE TO VERIFY THE EXACT LOCATION AND INVERTS OF THE UTILITY TO ALLOW FOR POSSIBLE CHANGES IN THE LINE OR GRADE AS DIRECTED BY OFFICER. THE CONTRACTOR SHALL BE RESPONSIBLE FOR ANY DAMAGE TO THE EXISTING UTILITIES AND THE RELATED STRUCTURES. ALL EXISTING UTILITY SYSTEMS SHALL BE PROTECTED TO PREVENT DAMAGE DURING THE CONTRACTOR'S OPERATIONS. ANY SYSTEM DAMAGED SHALL BE PROMPTLY REPAIRED AT NO COST TO THE OWNER.
- EXISTING MANHOLE FRAMES, COVERS, VALVE BOXES, AND OTHER APPURTENANCES SHALL BE ADJUSTED TO THE FINAL GRADE OR REPLACED, AS NECESSARY. UNLESS OTHERWISE SPECIFIED, THE COST FOR THIS SHALL BE CONSIDERED INCIDENTAL TO THE WORK, AND SHALL BE INCORPORATED INTO THE COSTS FOR RELEVANT ITEMS.
- THE CONTRACTOR SHALL PROVIDE ADA COMPLIANT ACCESS THROUGH OR AROUND THE SITE AT ALL TIMES AND SHALL ENSURE THE SAFETY OF ALL THOSE PASSING THROUGH OR ADJACENT TO THE SITE.
- ALL SIDEWALK AND CURB AND GUTTER DEMOLITION SHALL BEGIN AND END AT THE CONSTRUCTION JOINT NEAREST TO THE DEPICTED DEMOLITION EXTENTS WITH A NEAT SAWCUT LINE TO FULL DEPTH OF PAVEMENT SECTION.

STORMWATER AND ENVIRONMENTAL PROTECTION

- THE CONTRACTOR SHALL CONFINE ALL ACTIVITIES AT THE SITE ASSOCIATED WITH CONSTRUCTION ACTIVITIES, TO INCLUDE STORAGE OF EQUIPMENT AND OR MATERIALS, ACCESS TO THE WORK, FORMWORK, ETC. TO WITHIN THE DESIGNATED LIMITS OF DISTURBANCE (LOD).

TREE PROTECTION

- TREES SHALL BE PROTECTED PER THE REQUIREMENTS OF ARLINGTON PARKS & RECREATION STANDARD.

TRAFFIC CONTROL

- CONTRACTOR SHALL NOTIFY THE PROJECT OFFICER AT LEAST 3 WORKING DAYS PRIOR TO DISTURBING ANY EXISTING, OR INSTALLING ANY NEW, TRAFFIC SIGNS, SIGNALS, OR OTHER TRAFFIC CONTROL DEVICES.
- THE CONTRACTOR SHALL PREMARK THE LAYOUT OF ANY PERMANENT TRAFFIC CONTROL STRIPING, INDICATING THE PROPOSED LOCATION AND TYPE OF MARKING TO BE INSTALLED. THE PREMARKING MAY CONSIST OF TYPE D TAPE, CHALK, OR LUMBER CRAYONS. THE CONTRACTOR SHALL ALLOW 3 WORKING DAYS FOR THE INSPECTION AND APPROVAL OF THE PREMARKINGS PRIOR TO PLACING THE PERMANENT MARKINGS.
- THE CONTRACTOR SHALL SUBMIT ANY REQUESTS FOR TEMPORARY "NO PARKING" RESTRICTIONS TO THE PROJECT OFFICER AT LEAST 5 BUSINESS DAYS PRIOR TO THE DESIRED ONSET OF RESTRICTIONS. PRIOR TO A REQUEST FOR THE REMOVAL OF ACCESS TO ANY ADA PARKING SPACE THE CONTRACTOR MUST HAVE MADE PROVISION FOR ALTERNATIVE ADA PARKING AS INDICATED ON THE APPROVED PLAN OR AS DIRECTED BY THE PROJECT OFFICER.
- WHEN THE APPROVED PLAN CALLS FOR THE REMOVAL OF ANY PARKING METER THE CONTRACTOR MUST MAKE A REQUEST TO THE PROJECT OFFICER AT LEAST ONE WEEK IN ADVANCE OF THE DESIRED REMOVAL. THE PROJECT OFFICER WILL THEN COORDINATE THE PARKING METER REMOVAL WITH TRAFFIC ENGINEERING AND OPERATIONS.
- THE CONTRACTOR SHALL PRESERVE ALL BUS STOPS, INCLUDING MAINTAINING ADEQUATE ACCESSIBILITY THROUGH AND ADJACENT TO THE CONSTRUCTION FOR BUSES AND THEIR PASSENGERS. THE CONTRACTOR SHALL NOT CLOSE, RELOCATE, OR OTHERWISE MODIFY A BUS STOP WITHOUT PRIOR REQUEST OF THE PROJECT OFFICER. ANY RELOCATION OR CLOSURE OF A BUS STOP SHALL REQUIRE AT LEAST FOUR WEEKS ADVANCE NOTICE FOR COORDINATION WITH THE COUNTY'S BUS STOP COORDINATOR - 703-228-3049.
- WHEN CONDITIONS WARRANT DUE TO TRAFFIC VOLUMES, PATTERNS, OR SPECIAL EVENTS, THE COUNTY MAY SUSPEND OR OTHERWISE DIRECT THE CONTRACTOR'S ACTIVITIES TO PROTECT THE PUBLIC AND OR THE COUNTY'S TRANSPORTATION NETWORK.

WATER DISTRIBUTION, STORM AND SANITARY SEWER SYSTEMS

- UNLESS OTHERWISE DIRECTED, CONTRACTORS ARE EXPRESSLY PROHIBITED FROM OPERATING ANY WATER VALVES OR APPURTENANCES. CONTRACTORS SHALL SUBMIT ALL REQUESTS FOR VALVE OPERATIONS TO THE PROJECT OFFICER AT LEAST 1 WEEK IN ADVANCE OF THE REQUIRED OPERATION.
- IN THE EVENT OF A WATER OR SEWER EMERGENCY, THE CONTRACTOR SHALL IMMEDIATELY NOTIFY THE COUNTY'S WATER CONTROL CENTER AT 703-228-6555 AND THE PROJECT OFFICER.
- THE CONTRACTOR SHALL COORDINATE ALL UTILITY SHUTOFFS, DISCONNECTS, AND/OR ABANDONMENT WITH UTILITY OWNER AND PROJECT OFFICER AT LEAST 1 WEEK IN ADVANCE OF THE REQUIRED INTERRUPTION.

FIRE DEPARTMENT NOTES:

- ALL EXISTING FIRE HYDRANTS AND FIRE DEPARTMENT CONNECTIONS SHALL BE MAINTAINED UNOBSTRUCTED AND ACCESSIBLE AT ALL TIMES IN ACCORDANCE WITH SECTIONS 508.5.4 AND 508.5.5 OF THE ARLINGTON COUNTY FIRE PREVENTION CODE.
- ACCESS TO BUILDINGS FOR FIREFIGHTING SHALL BE MAINTAINED AT ALL TIMES. EXISTING FIRE APPARATUS ACCESS ROADS (FIRE LANES) SHALL BE KEPT CLEAR OF OBSTRUCTIONS IN ACCORDANCE WITH SECTION 503.4 OF THE ARLINGTON COUNTY FIRE PREVENTION CODE. ACCESS TO CONSTRUCTION SITES SHALL BE PROVIDED AND MAINTAINED IN ACCORDANCE WITH SECTION 1410 OF THE ARLINGTON COUNTY FIRE PREVENTION CODE.
- IN THE EVENT THAT EXISTING FIRE DEPARTMENT CONNECTIONS OR FIRE APPARATUS ACCESS ROADS (FIRE LANES) MUST BE OBSTRUCTED TO FACILITATE CONSTRUCTION ACTIVITIES, CONTACT THE ARLINGTON COUNTY FIRE DEPARTMENT FIRE PREVENTION OFFICE AT 703-228-4644 TO COORDINATE REVIEW AND APPROVAL OF TEMPORARY FIRE DEPARTMENT CONNECTIONS AND/OR FIRE APPARATUS ACCESS ROADS PRIOR TO CREATING THE OBSTRUCTION.

Sheet List Table

Sheet Number	Sheet Title
C000.1	COVER SHEET
C004.1	TYPICAL SECTIONS
C006.1	LEGEND
C011.1	EXISTING CONDITIONS PLAN
C035.1	PRE & POST DEVELOPMENT MAP
C041.1	PLAN
C041.2	PROFILE
C101.1	SIGNAGE AND STRIPING PLAN
C200.1	TURNING MOVEMENT EXHIBIT I
C200.2	TURNING MOVEMENT EXHIBIT II
C201.1	SIGHT DISTANCE EXHIBIT I
C201.2	SIGHT DISTANCE EXHIBIT II

SWM#

ADT
22000 - COLUMBIA PIKE - 2021 - VDOT
XXXX - S ROLFE ST - XXXX - ARLINGTON

STREET CLASSIFICATION

COLUMBIA PIKE - PRINCIPAL ARTERIAL
S ROLFE ST - XXXX

POSTED SPEED

COLUMBIA PIKE - 30 MPH
ROLFE ST N - 25 MPH



DEPARTMENT OF ENVIRONMENTAL SERVICES
FACILITIES & ENGINEERING DIVISION
ENGINEERING BUREAU
2100 CLARENDON BOULEVARD, SUITE 813
ARLINGTON, VA 22201
PHONE: 703.228.3629
FAX: 703.228.3606

COPYRIGHT © 2023 ARLINGTON COUNTY VIRGINIA - ALL RIGHTS RESERVED

SEAL

REVISIONS DATE

REVISIONS	DATE

COLUMBIA PIKE AND S ROLFE ST INTERSECTION REALIGNMENT DS41

COVER SHEET

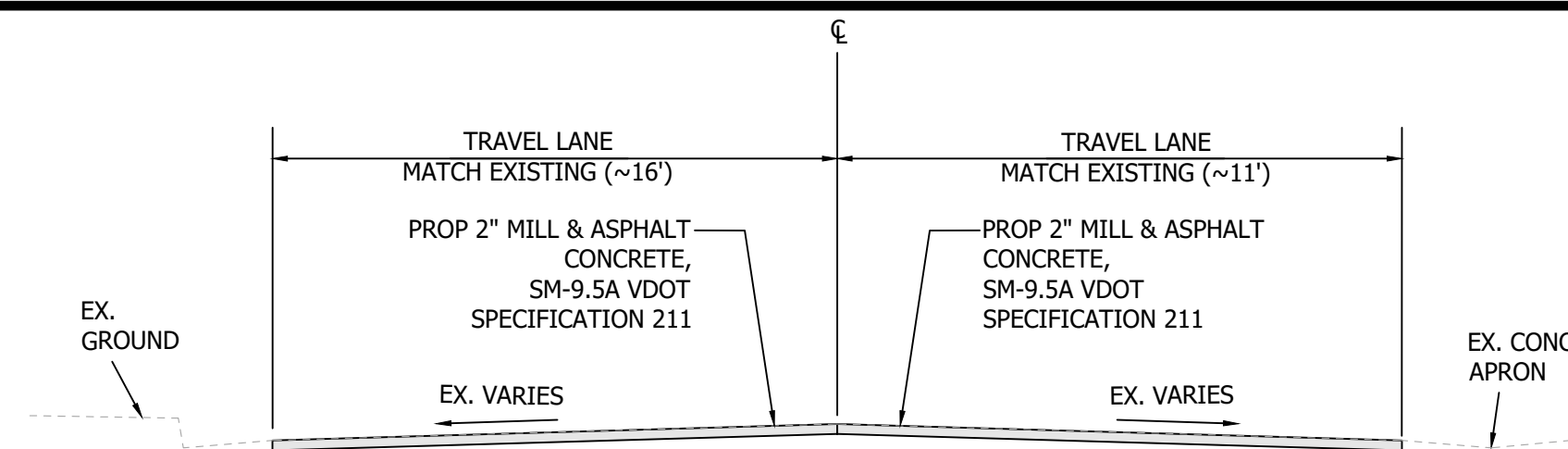
DESIGNED: TN
DRAWN: MS
CHECKED: BG

PLOTTED: MARCH 21 2023

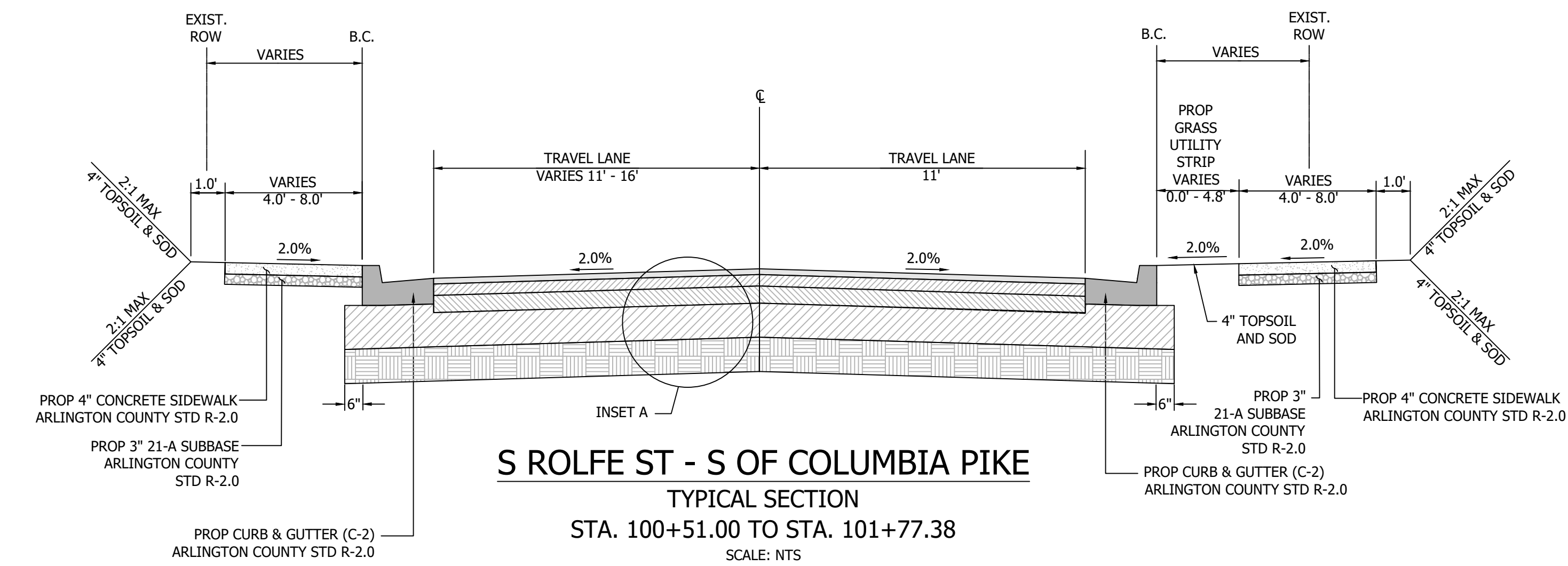
SCALE:

AS SHOWN

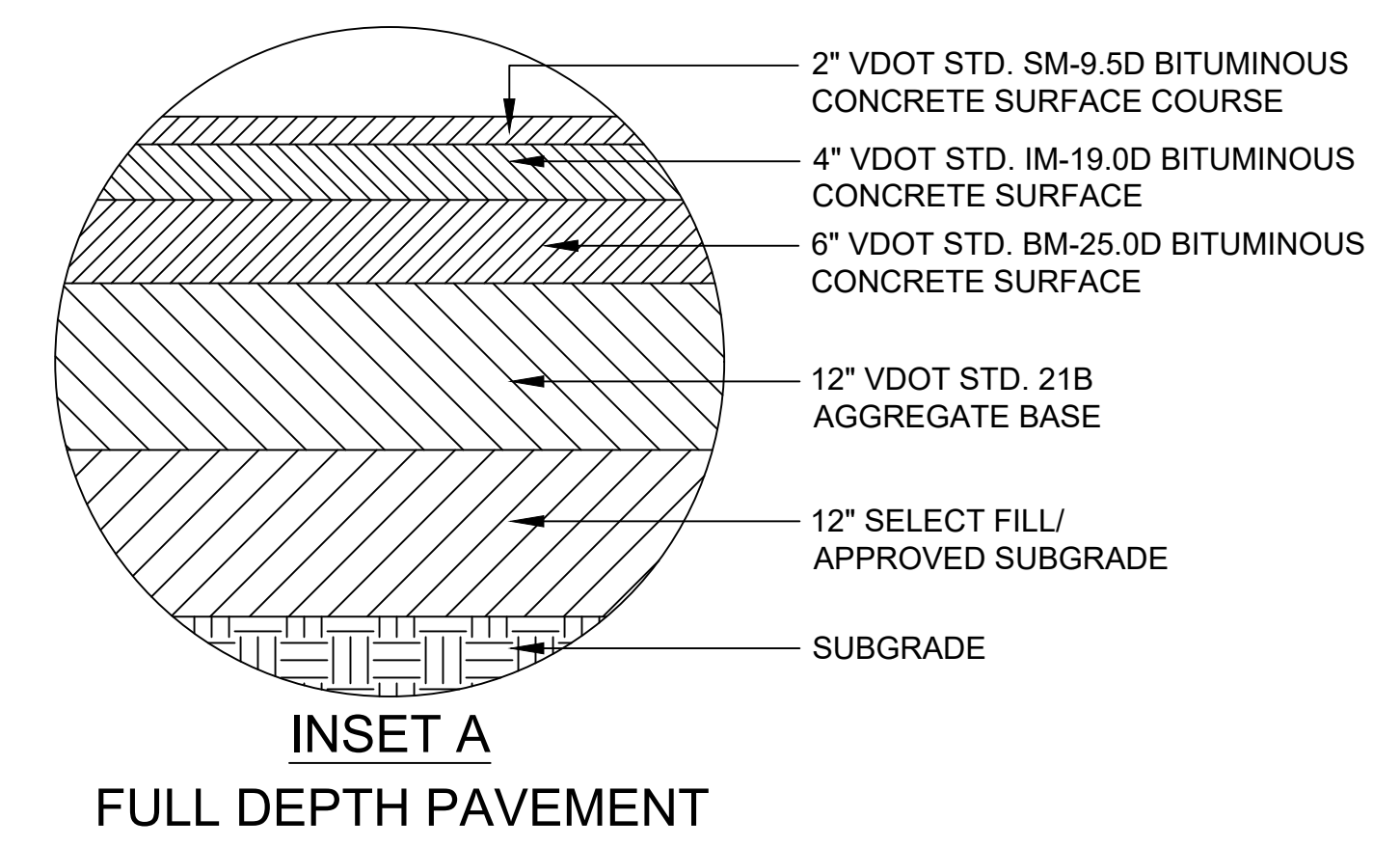
C000.1



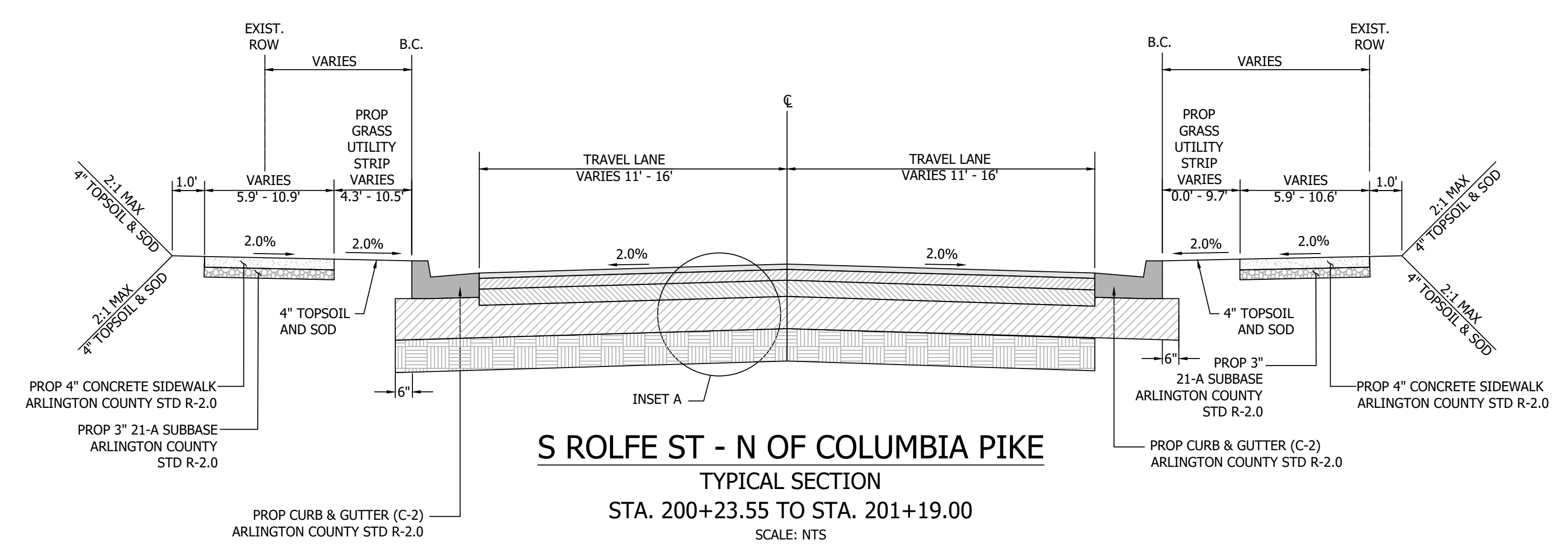
S ROLFE ST - MILL AND OVERLAY SECTION
TYPICAL SECTION
STA. 100+26.00 TO STA. 100+51.00
SCALE: NTS



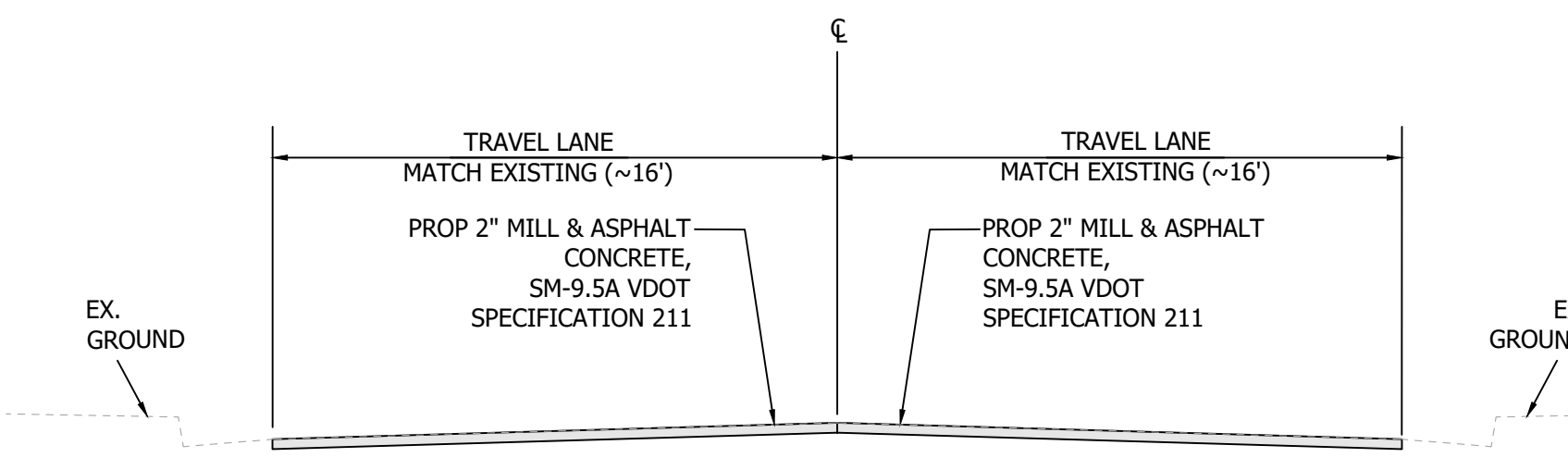
S ROLFE ST - S OF COLUMBIA PIKE
TYPICAL SECTION
STA. 100+51.00 TO STA. 101+77.38
SCALE: NTS



S ROLFE ST & COLUMBIA PIKE INTERSECTION
STA. 101+77.38 TO 102+00.89
STA. 200+00.00 TO 200+23.55



S ROLFE ST - N OF COLUMBIA PIKE
TYPICAL SECTION
STA. 200+23.55 TO STA. 201+19.00
SCALE: NTS



S ROLFE ST - MILL AND OVERLAY SECTION
TYPICAL SECTION
STA. 201+19.00 TO STA. 201+44.00
SCALE: NTS

SEAL

REVISIONS	DATE

COLUMBIA PIKE AND S ROLFE ST INTERSECTION REALIGNMENT DS41

TYPICAL SECTIONS

DESIGNED: TN
DRAWN: MS
CHECKED: BG
PLOTTED: MARCH 21 2023

SCALE:
NOT TO SCALE

LINETYPE LEGEND

FEATURE	EXISTING	PROPOSED
BUILDING	— — — — —	— — — — —
CENTERLINE / BASELINE	— — — — —	— — — — —
COMMUNICATIONS CABLE	— COM — COM —	— COM — COM —
CONTOURS - MAJOR, MINOR	--- 250 --- 250 ---	— 250 —
CRITICAL ROOT ZONE	— CRZ — CRZ —	— CRZ — CRZ —
EASEMENT	— — — — —	— — — — —
ELECTRIC (UNDERGROUND)	— UGE — UGE —	— UGE — UGE —
FENCE (MATERIAL NOTED)	— — — — —	-X-X-X-X-X-
FIBER OPTIC	— FO — FO —	— FO — FO —
GAS LINE	— GAS — GAS —	— GAS — GAS —
X" GAS LINE (SIZE INCLUDED IF AVAILABLE)	- X" G - X" G - X" G -	- #" G - #" G -
GUARDRAIL	. o o o o o o o o .	. o o o o o o o o .
HARDSCAPE FEATURE (MATERIAL NOTED)	— — — — —	— — — — —
LIMITS OF DISTURBANCE	— LOD — LOD —	— LOD — LOD —
LIMITS OF WORK	— LOW — LOW —	— LOW — LOW —
OVERHEAD WIRES		
PAVEMENT MINI SKIP LINE	— — — — —	— — — — —
PAVEMENT SKIP LINE	— — — — —	— — — — —
PROPERTY LINE	— — — — —	— — — — —
RIGHT-OF-WAY LINE	— — — — —	— — — — —
ROOT PRUNING	— RP — RP —	— RP — RP —
SANITARY SEWER	— SAN —	— SAN —
SANITARY SEWER UNDER 20" (SIZE INCLUDED IF AVAILABLE)	- #" s - #" s -	— — — — —
SANITARY SEWER OVER 20"	= = = = =	= = = = =
SILT FENCE	-X-X-X-X-X-	-X-X-X-X-X-
STORM (SIZE NOTED)	— STM — STM —	— — — — —
STREAM	— — — — —	— — — — —
STREET LIGHT CONDUIT	— SL — SL —	— SL — SL —
TELEPHONE (UNDERGROUND)	— UGT — UGT —	— UGT — UGT —
TREE LINE	~ ~ ~ ~ ~	~ ~ ~ ~ ~
TREE PROTECTION FENCE	— TP — TP —	— TP — TP —
WALL	— — — — —	— — — — —
WATERLINE UNDER 20" (SIZE INCLUDED IF AVAILABLE)	- #" w - #" w -	— — — — —
WATERLINE OVER 20"	= = = = =	= = = = =

SYMBOL LEGEND

EXISTING FEATURE	PROPOSED FEATURE
EX CABLE PEDESTAL	□
EX ELECTRIC BOX	ⓔ
EX FIRE HYDRANT	⊕
EX GAS VALVE	●
EX GROUND LIGHT	⚡
EX GUY WIRES	Y
EX IRON PIPE OR PIN	●
EX LIGHT POLE	●
EX MAILBOX	✉
EX MONUMENT	⊠
EX PARKING METER	Ⓜ
EX PAY STATION	Ⓟ
EX SANITARY MANHOLE	⊙
EX STORM BASIN	Ⓛ
EX STORM MANHOLE	Ⓢ
EX TELEPHONE PEDESTAL	Ⓣ
EX TRAFFIC CONTROL BOX	Ⓛ
EX TRAFFIC SIGN	Ⓣ
EX TRASH CAN	Ⓢ
EX TRAVERSE	⚡
EX TREES, WOODED AREA	⊕
EX UTILITY MANHOLE (TYPE INDICATED ELEC, TELE, ETC)	Ⓢ
EX UTILITY POLE	Ⓢ
EX WATER MANHOLE	⊙
EX WATER METER	Ⓢ
EX WATER VALVE	⊙
EX YARD INLET	Ⓢ
EX BENCHMARK	Ⓢ
	CONSTRUCTION NOTES (LEADER TO AREA AFFECTED) ⚠
	DETAIL NUMBER (SEE NOTE) Ⓢ
	CURVE NUMBER (SEE CURVE TABLE) Ⓢ
	LINE NUMBER (SEE LINE TABLE) Ⓢ
	TEST HOLE Ⓢ
	NORTH ARROW Ⓢ

LABEL LEGEND

EXISTING	PROPOSED
EXISTING SANITARY STRUCTURE NUMBER	PROPOSED SANITARY SEWER STRUCTURE NUMBER
EXISTING STORM SEWER STRUCTURE NUMBER	PROPOSED STORM SEWER STRUCTURE NUMBER

HATCH LEGEND

PROP MILL & OVERLAY (SEE TYPICAL SECTION FOR DETAILS)	▨
PROP FULL DEPTH ASPHALT (SEE TYPICAL SECTION FOR DETAILS)	▨
PROP CONCRETE	▨
REPLACE & MATCH EXISTING DRIVEWAY OR LEADWALK. (SEE CONSTRUCTION NOTES)	▨
DEMOLITION AREA	▨
TEMPORARY CONSTRUCTION EASEMENT	▨

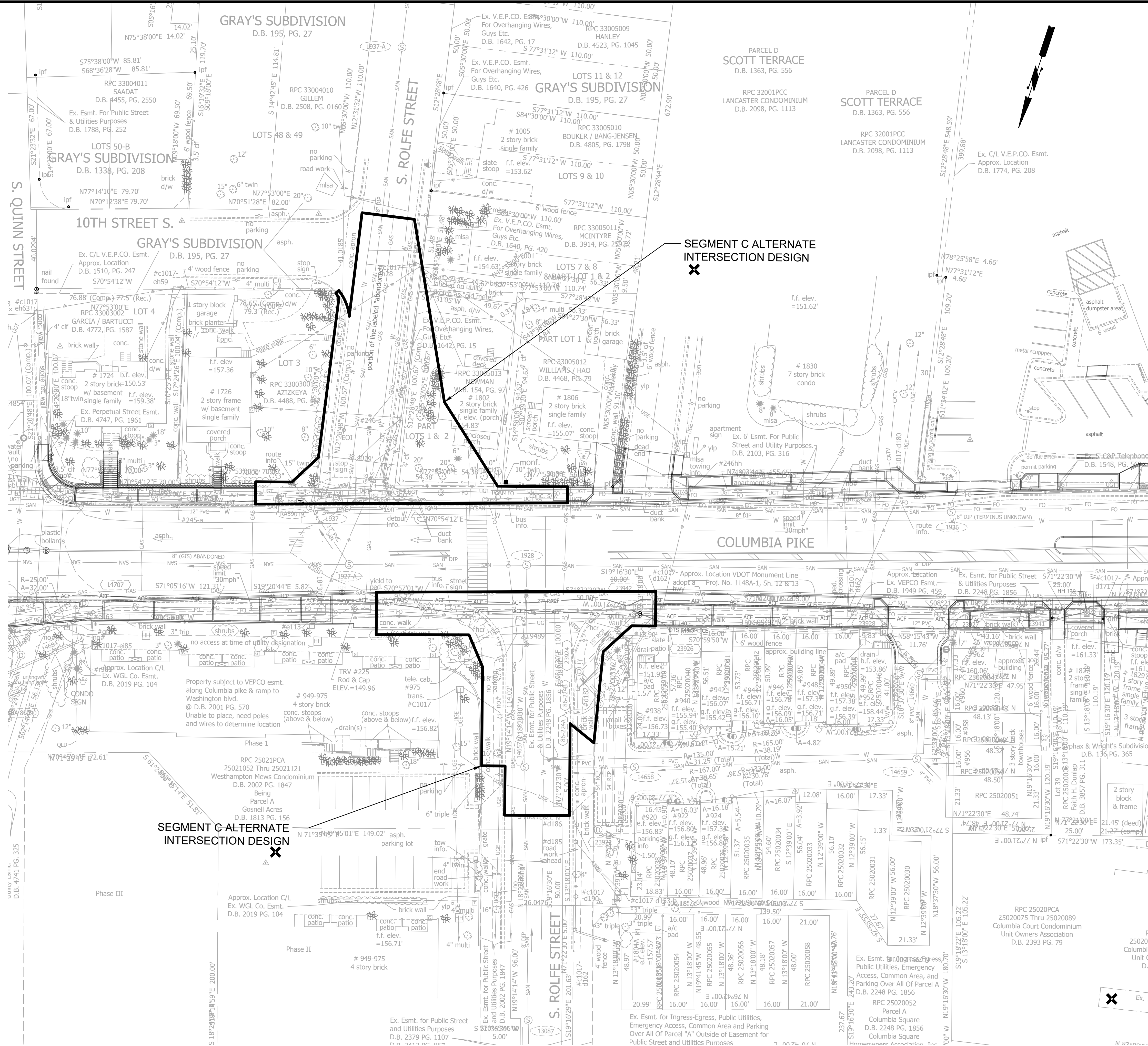
SEAL

REVISIONS	DATE

COLUMBIA PIKE AND S ROLFE ST INTERSECTION
 REALIGNMENT
 DS41
 LEGEND

DESIGNED: TN
 DRAWN: MS
 CHECKED: BG
 PLOTTED: MARCH 21 2023

SCALE:
 N/A



ARLINGTON VIRGINIA
 DEPARTMENT OF ENVIRONMENTAL SERVICES
 FACILITIES & ENGINEERING DIVISION
 ENGINEERING BUREAU
 2100 CLARENDON BOULEVARD, SUITE 813
 ARLINGTON, VA 22201
 PHONE: 703.228.3629
 FAX: 703.228.3606

COPYRIGHT © 2023 ARLINGTON COUNTY VIRGINIA - ALL RIGHTS RESERVED

SEAL

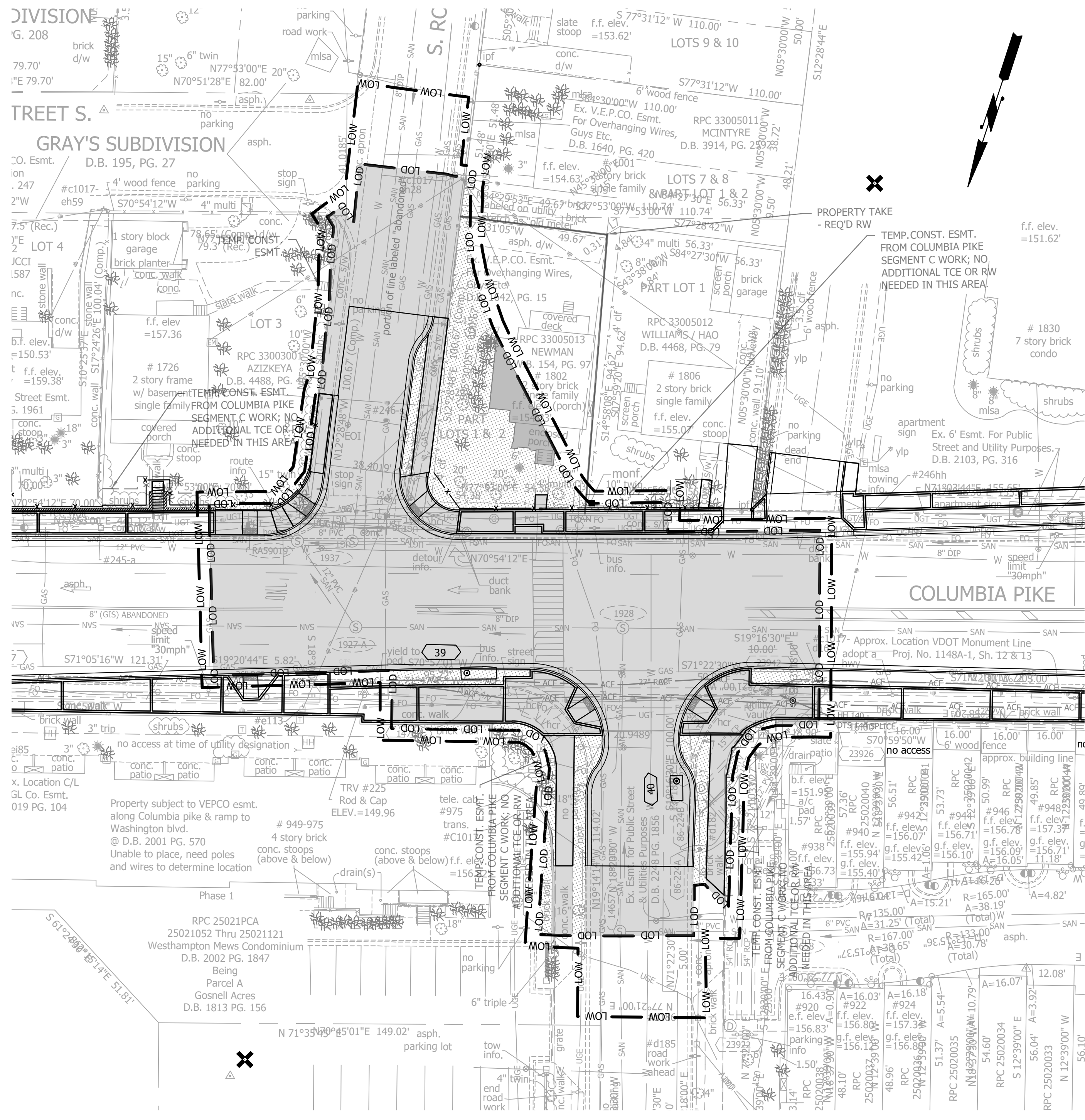
REVISIONS	DATE

COLUMBIA PIKE AND S ROLFE ST INTERSECTION REALIGNMENT
 DS41
 EXISTING CONDITIONS PLAN

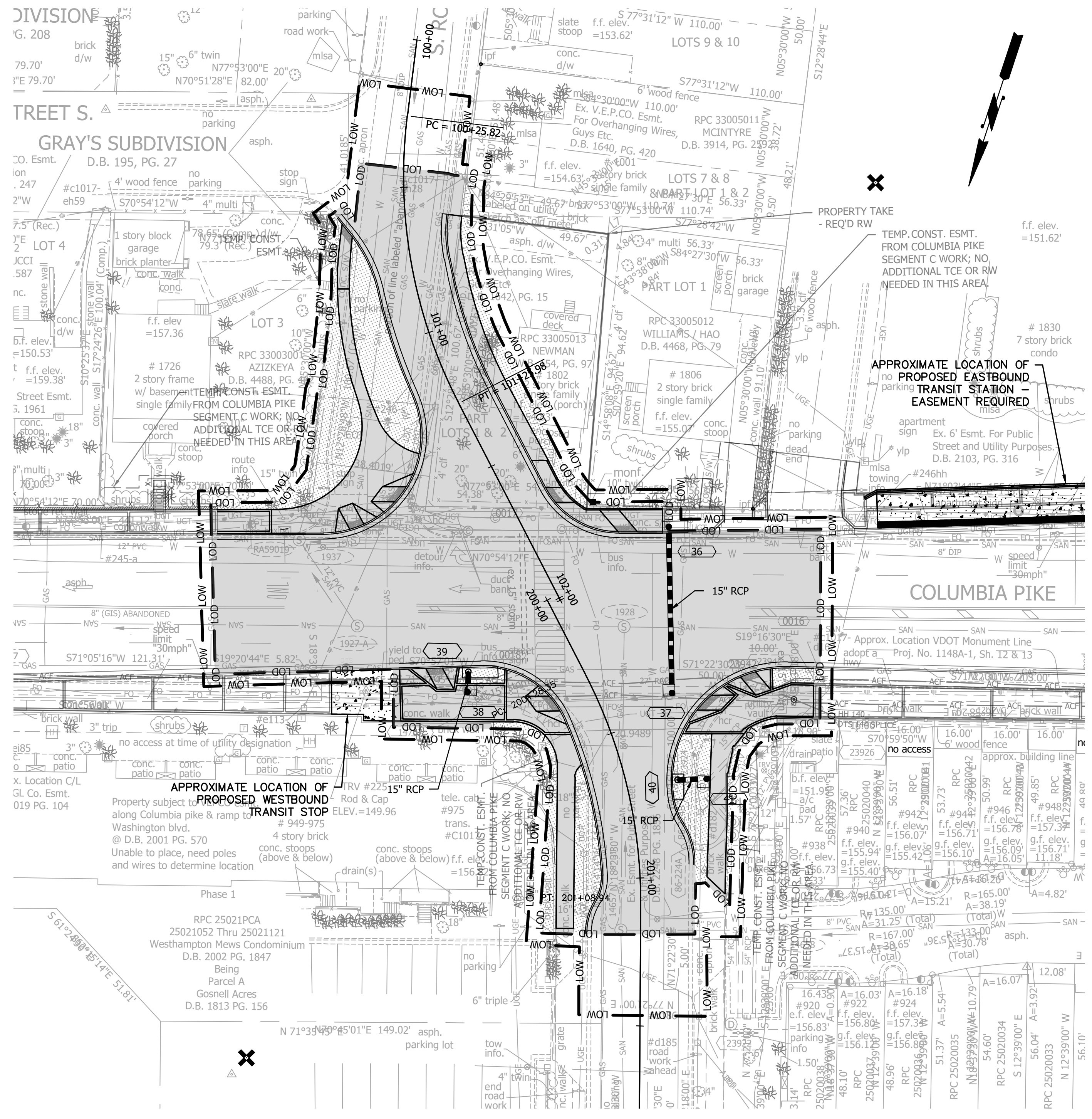
DESIGNED: TN
 DRAWN: MS
 CHECKED: BG

PLOTTED: MARCH 22 2023

SCALE:







PRE-DEVELOPMENT CONDITIONS



POST-DEVELOPMENT CONDITIONS

	TOTAL PROJECT AREA			
	PRE-DEV.		POST-DEV.	
	SF	AC	SF	AC
PERVIOUS AREA	3,802	0.09	3,613	0.08
IMPERVIOUS AREA	21,494	0.49	21,683	0.50
TOTAL LIMIT OF DISTURBANCE	25,296 SF (0.58 AC)			
CHANGE IN IMPERVIOUS	+189 SF			

LEGEND

-  GRASSED AREA (WITHIN LOD)
-  IMPERVIOUS AREA (WITHIN LOD)
-  LIMIT OF DISTURBANCE
-  LIMIT OF WORK

NOTE:
THE LIMIT OF DISTURBANCE (LOD) IS LESS THAN 1 ACRE; THEREFORE, A STORMWATER MANAGEMENT PLAN IS NOT REQUIRED.

ARLINGTON VIRGINIA
DEPARTMENT OF ENVIRONMENTAL SERVICES
FACILITIES & ENGINEERING DIVISION
ENGINEERING BUREAU
2100 CLARENDON BOULEVARD, SUITE 813
ARLINGTON, VA 22201
PHONE: 703.228.3629
FAX: 703.228.3606

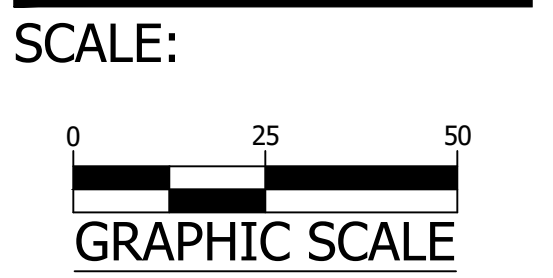
SEAL

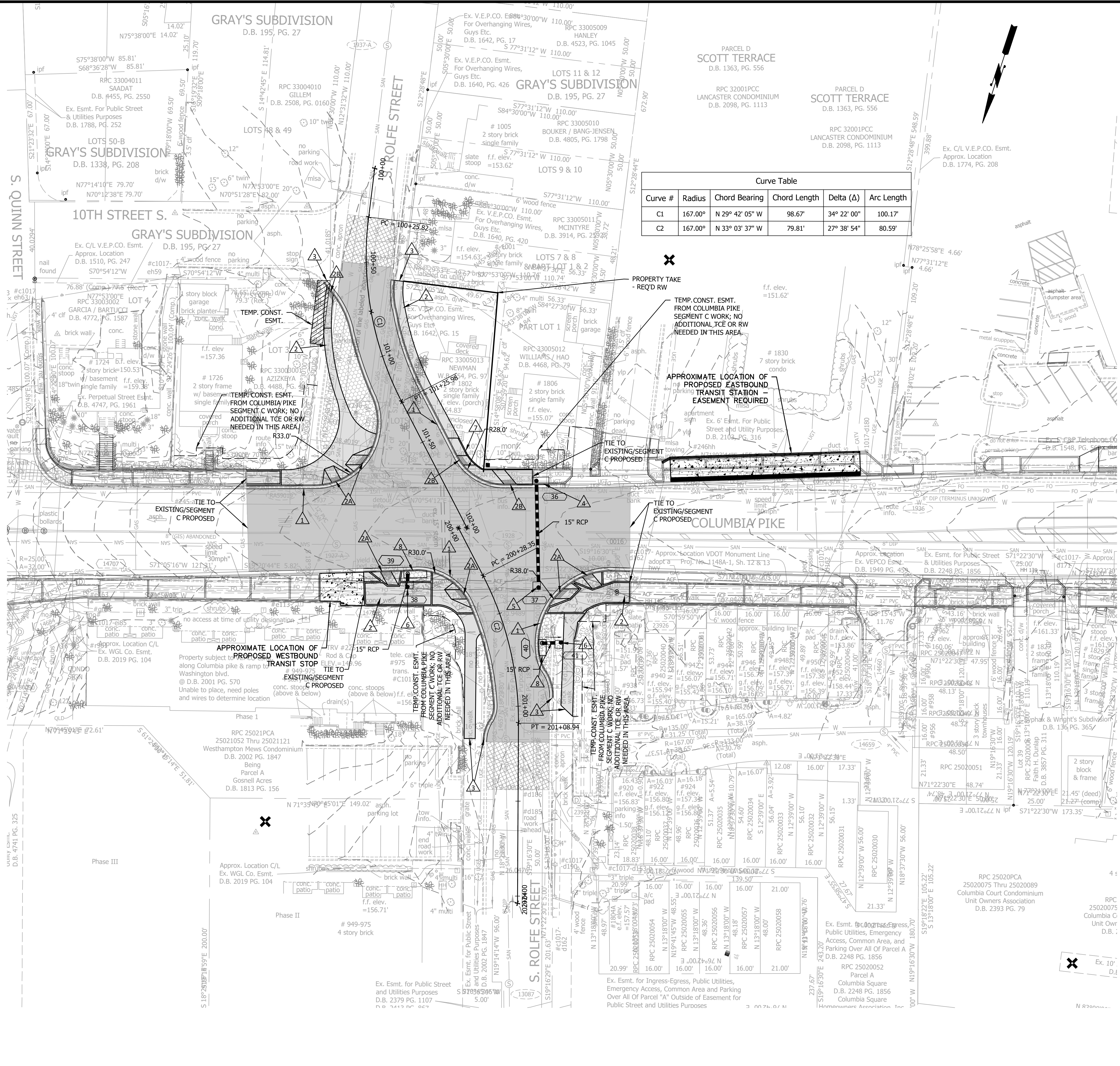
REVISIONS	DATE

COLUMBIA PIKE AND S ROLFE ST INTERSECTION REALIGNMENT DS41
PRE & POST-DEVELOPMENT MAP

DESIGNED: BB
DRAWN: MS
CHECKED: BG

PLOTTED: MARCH 22 2023





Curve Table

Curve #	Radius	Chord Bearing	Chord Length	Delta (Δ)	Arc Length
C1	167.00'	N 29° 42' 05" W	98.67'	34° 22' 00"	100.17'
C2	167.00'	N 33° 03' 37" W	79.81'	27° 38' 54"	80.59'

CONSTRUCTION NOTES

- 1 PROP CURB AND GUTTER (C-2) ARL STD (R-2.0)
- 2 PROP SIDEWALK ARL STD (R-2.0)
- 2A PROP RAMP (CG-12-MOD) VDOT ROAD & BRIDGE STANDARDS (204.02)
- 2B PROP RAMP (CG-12, TYPE B-MOD) VDOT ROAD & BRIDGE STANDARDS (204.03)
- 3 MATCH EXISTING CURB & GUTTER AND/OR SIDEWALK
- 4 PROP STANDARD CATCH BASIN, CB-2 PER ARL STD (D-1.2)
- 5 PROP STANDARD STORM SEWER MANHOLE MH-1 PER ARL STD (D-3.2)
- 6 CONVERT CATCH BASIN TO MANHOLE
- 7 PROP HEADER CURB (C-3) ARL STD (R-2.0)
- 8 PROP STANDARD CATCH BASIN (MODIFIED), CB-2 PER ARL STD (D-1.2)

ARLINGTON VIRGINIA
 DEPARTMENT OF ENVIRONMENTAL SERVICES
 FACILITIES & ENGINEERING DIVISION
 ENGINEERING BUREAU
 2100 CLARENDON BOULEVARD, SUITE 813
 ARLINGTON, VA 22201
 PHONE: 703.228.3629
 FAX: 703.228.3606

COPYRIGHT © 2023 ARLINGTON COUNTY VIRGINIA - ALL RIGHTS RESERVED

SEAL

REVISIONS DATE

NO.	DESCRIPTION	DATE

COLUMBIA PIKE AND S ROLFE ST INTERSECTION REALIGNMENT
 DS41
 PLAN

LEGEND

- PROP MILL & OVERLAY SEE TYPICAL SECTION FOR DETAILS
- PROP FULL DEPTH ASPHALT SEE TYPICAL SECTION FOR DETAILS
- PROP CONCRETE
- DEMOLITION AREA
- TEMPORARY CONSTRUCTION EASEMENT

DESIGNED: TN
 DRAWN: MS
 CHECKED: BG

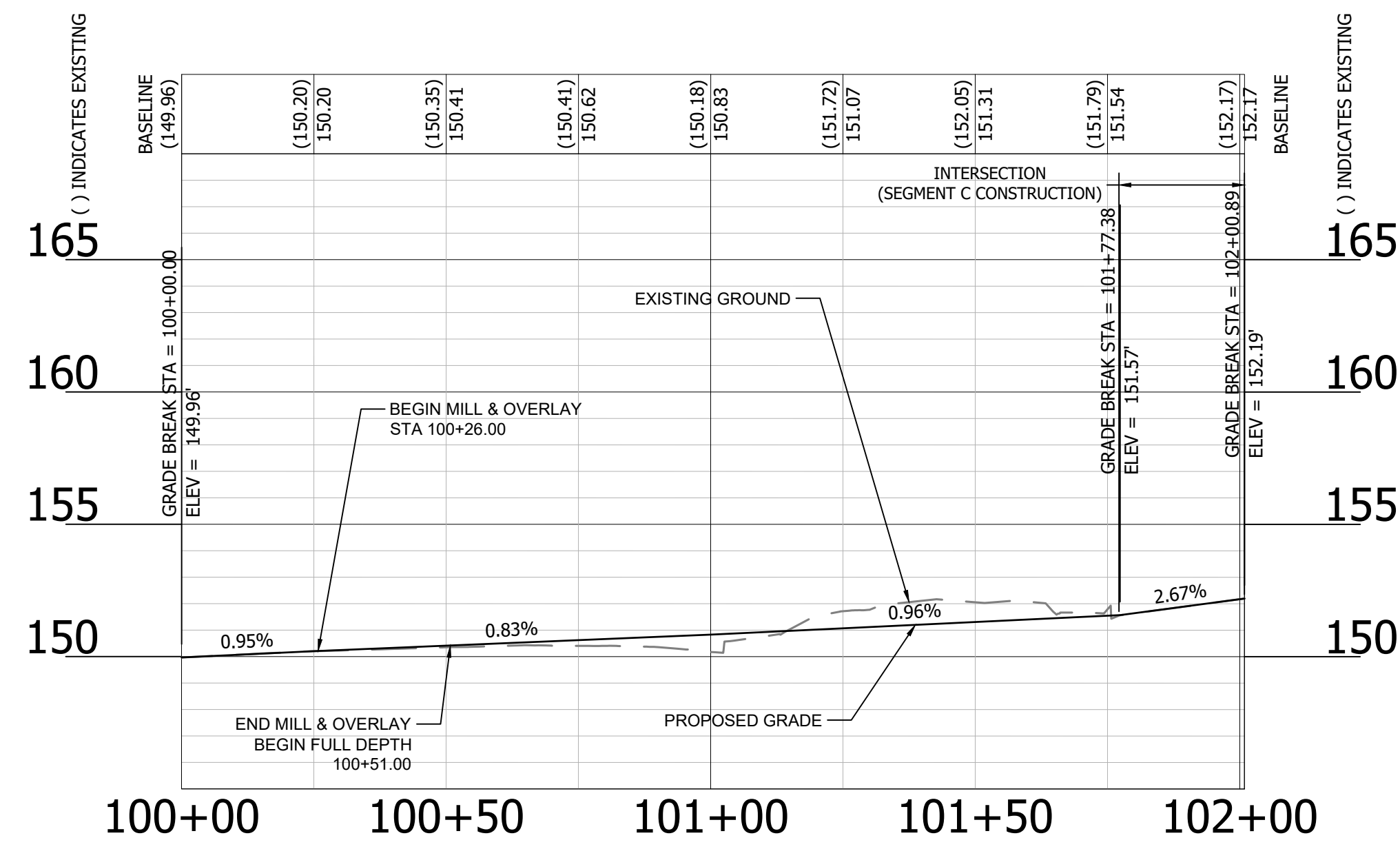
PLOTTED: MARCH 22 2023

SCALE:



SEAL

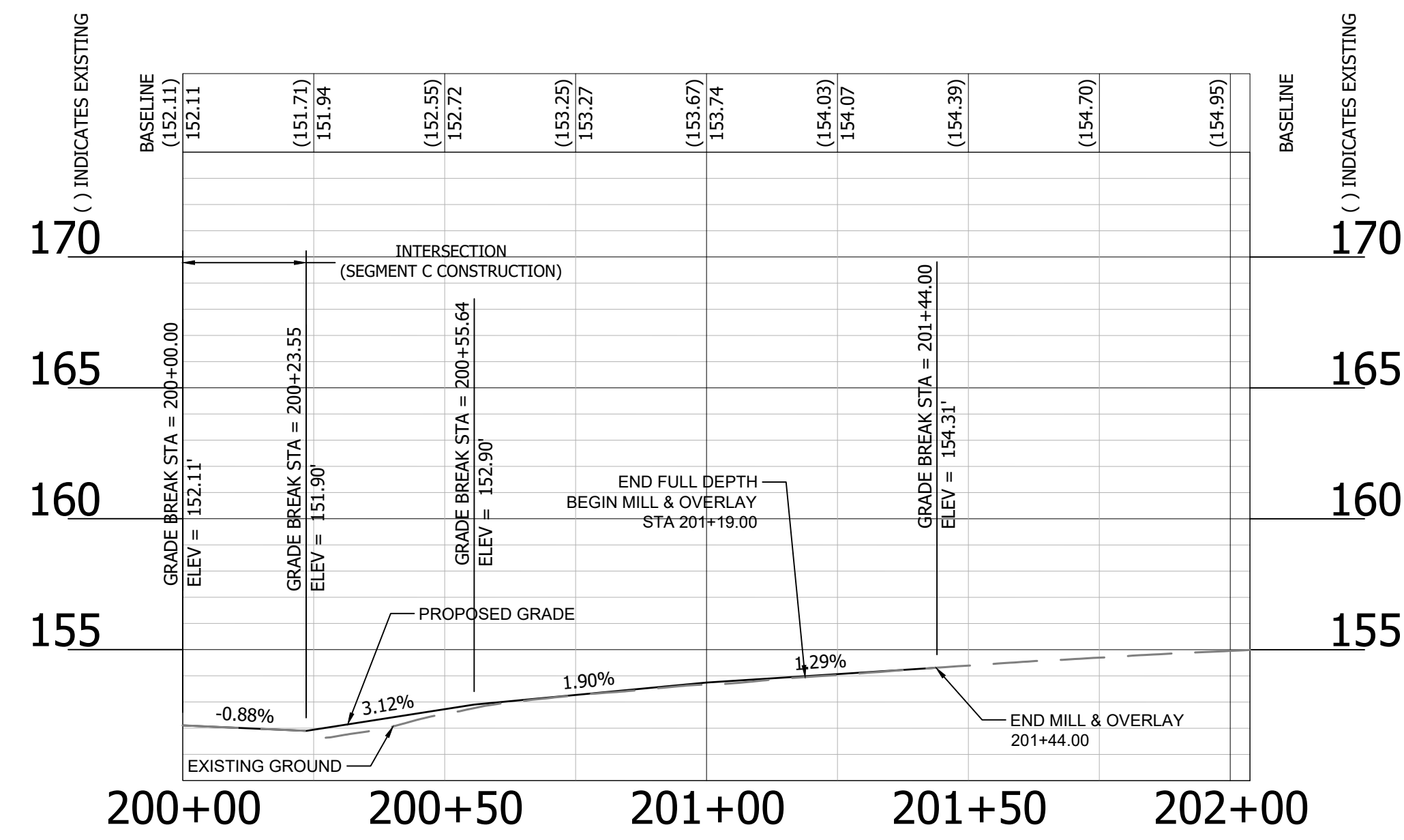
REVISIONS	DATE



S ROLFE ST PROFILE

SOUTH OF INTERSECTION

HOR. SCALE: 1" = 25'
VER. SCALE: 1" = 5'



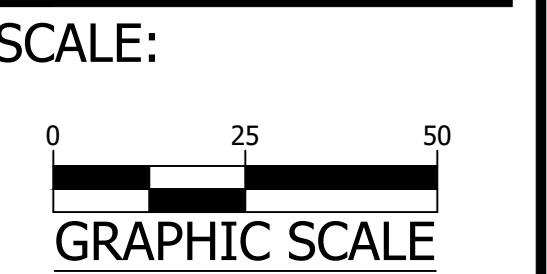
S ROLFE ST PROFILE

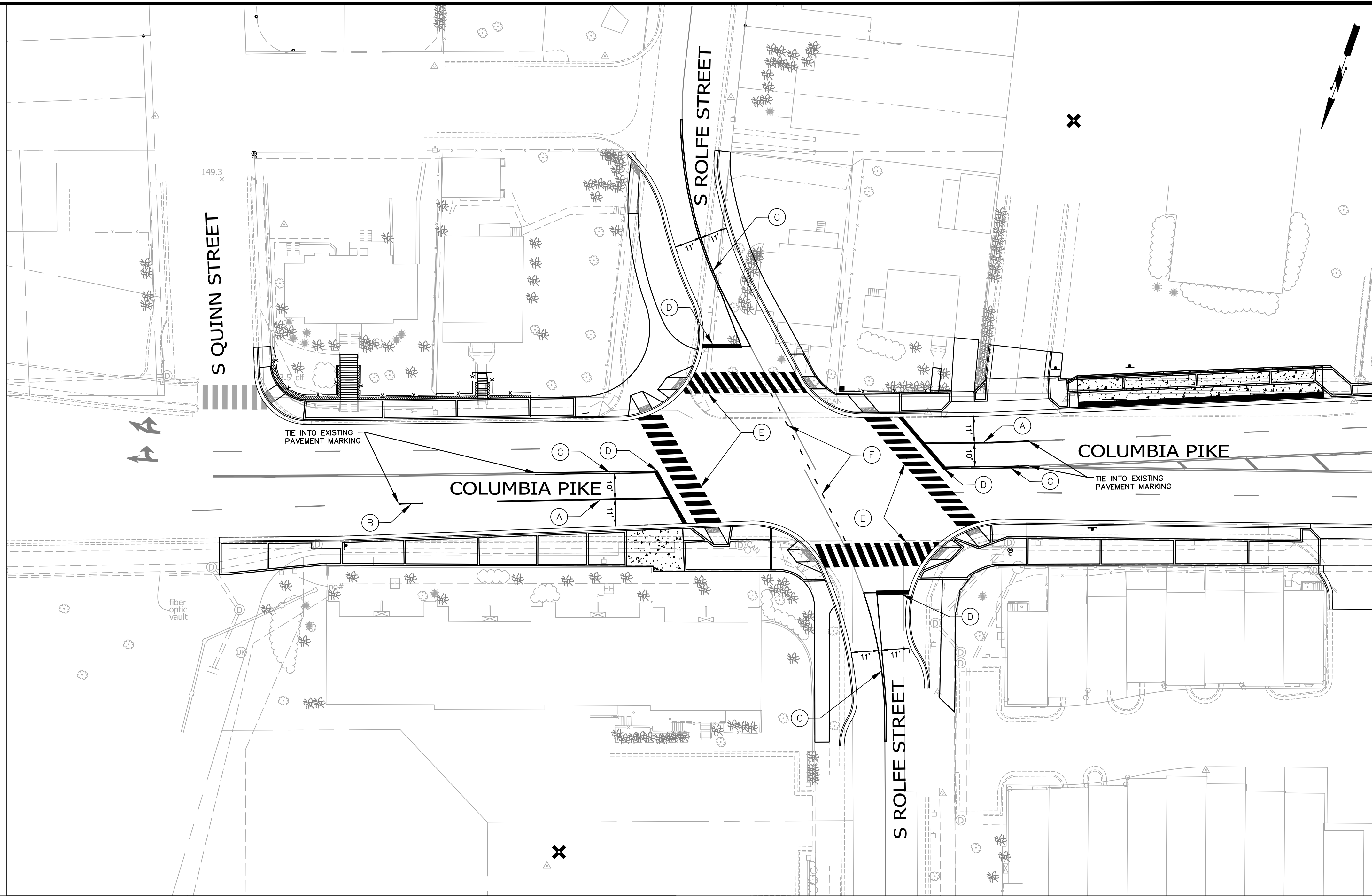
NORTH OF INTERSECTION

HOR. SCALE: 1" = 25'
VER. SCALE: 1" = 5'

COLUMBIA PIKE AND S ROLFE ST INTERSECTION
 REALIGNMENT
 DS41
 PROFILE

DESIGNED: TN
 DRAWN: MS
 CHECKED: BG
 PLOTTED: MARCH 21 2023





PAVEMENT MARKING NOTES:

- STREET WIDTH MEASUREMENTS ARE FROM FACE OF CURB TO FACE OF CURB. LANES ARE MEASURED FROM CENTER OF MARKING TO CENTER OF MARKING .
- CONTACT T&O CONSTRUCTION MANAGER OR HIS DESIGNEE AT 703-228-6598 OR 571-437-1077 TO APPROVE MARKING LAYOUT 48 HRS PRIOR TO INSTALLATION OF MARKING.
- PAVEMENT MARKINGS TO BE IN ACCORDANCE WITH THE FOLLOWING AND ANY REVISIONS HERE TO:
 - THE MANUAL ON UNIFORM TRAFFIC CONTROL DEVICES.
 - ARLINGTON COUNTY MARKING SPECIFICATIONS.
- ALL MARKINGS SHALL BE THERMOPLASTIC UNLESS OTHERWISE NOTED.
- STOP BARS SHALL BE A MINIMUM OF 4' IN ADVANCE OF A MARKED CROSSWALK. IF THERE IS NO MARKED CROSSWALK, STOP BAR SHALL BE NO MORE THAN 30' FROM THE NEAREST EDGE OF THE INTERSECTED TRAVELED WAY.
- CROSSWALKS SHALL BE 10' WIDE UNLESS OTHERWISE NOTED.
- FOR DETAILS SEE ARLINGTON COUNTY PAVEMENT MARKING SPECIFICATIONS, DETAILS MK-1 TO MK-12.

STANDARD PAVEMENT MARKING LEGEND:

- | | |
|---|-----------------------------------|
| (A) TYPE B CLASS I..... WHITE 4" WIDTH | LANE LINES |
| (B) TYPE B CLASS I..... WHITE 4" WIDTH, 10' LONG, 30' SPACING | DASHED LANE LINES |
| (C) TYPE B CLASS I..... YELLOW 4" WIDTH, DOUBLE LINE | CENTERLINES |
| (D) TYPE B CLASS I..... WHITE 18" WIDTH | STOP BARS |
| (E) TYPE B CLASS I..... WHITE 24" WIDTH | CONTINENTAL CROSS WALKS |
| (F) TYPE B CLASS I..... YELLOW 4" WIDTH, 2' LONG, 4' SPACING | LANE TRANSITIONS, TURN LANE SKIPS |

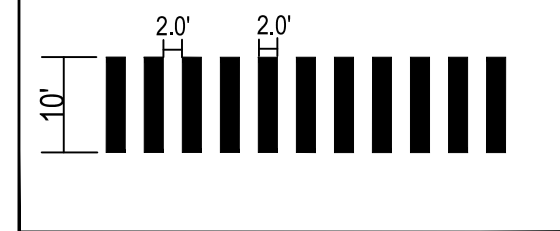
STRIPING LEGEND

- (A) EXISTING STRIPING
- (A) PROPOSED STRIPING

LEGEND

- | | |
|--|--|
| | |
| | |
| | |
| | |

HIGH INTENSITY CROSSWALK



SEAL

REVISIONS	DATE

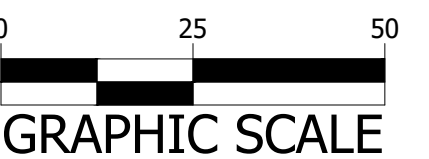
COLUMBIA PIKE AND S ROLFE ST INTERSECTION REALIGNMENT DS41

SIGNING AND PAVEMENT MARKING PLAN

DESIGNED: DY
 DRAWN: DY
 CHECKED: SF

PLOTTED: MARCH 29 2023

SCALE:



General Notes:

A. GENERAL

- ALL WORK FOR TRAFFIC SIGNALS, TRAFFIC SIGNS, AND PAVEMENT MARKINGS SHALL BE IN ACCORDANCE WITH THE 2009 MANUAL ON UNIFORM TRAFFIC CONTROL DEVICES (MUTCD), THE LATEST EDITION OF THE ARLINGTON COUNTY TRAFFIC SIGNAL & STREETLIGHT SPECIFICATIONS, 2020 VIRGINIA ROAD AND BRIDGE STANDARDS, 2011 VIRGINIA SUPPLEMENT TO THE MUTCD, 2011 VIRGINIA WORK AREA PROTECTION MANUAL, AND SPECIAL PROVISIONS IN EFFECT AT THE TIME OF ADVERTISEMENT.
- FIVE WORKING DAYS PRIOR TO COMMENCING SIGNAL INSTALLATION/MODIFICATION WORK AT ANY LOCATION IN ARLINGTON COUNTY, VIRGINIA, SIGNAL CONTRACTORS MUST NOTIFY THE COUNTY ENGINEER IN WRITING WITH THE NAME, DAYTIME PHONE NUMBER, AND EMERGENCY PHONE NUMBERS OF THE CONTRACTOR. THIS NOTIFICATION IS TO INCLUDE LOCATION, ROUTE NUMBERS, TYPE, AND DETAILS OF CONSTRUCTION AND SCHEDULE OF WORK.
- THE TRAFFIC SIGNAL CONSTRUCTION SHALL NOT BEGIN WITHOUT PRIOR NOTIFICATION AND APPROVAL FROM ARLINGTON COUNTY.
- THE COUNTY ENGINEER, PRIOR TO CONSTRUCTION, SHALL VERIFY POLE(S) AND CONTROLLER CABINET LOCATIONS.
- ALL CATALOG CUTS, POLE CALCULATIONS, FOUNDATION DESIGNS, SHOP DRAWINGS, ETC. SHALL BE SUBMITTED TO, AND APPROVED BY, ARLINGTON COUNTY PRIOR TO CONSTRUCTION.
- OPERATION OF THE SIGNALIZED INTERSECTION IS THE RESPONSIBILITY OF THE CONTRACTOR UNTIL THE TRAFFIC SIGNAL IS ACCEPTED BY ARLINGTON COUNTY.
- ANY NOTES NOT MENTIONED IN THE NOTES SECTION OF THIS SIGNAL PLAN WILL REVERT TO THE ARLINGTON COUNTY STANDARDS.
- CONTRACTOR WILL BE RESPONSIBLE FOR MAINTAINING TRAFFIC SIGNAL COMMUNICATION THROUGHOUT THE PROJECT.
- ALL NEW CONTROLLER CABINETS MUST BE FURNISHED WITH A BACKUP POWER BATTERY.
- THE CONTRACTOR SHALL CONTACT "MISS UTILITY" AT 811 FOR MARKING THE LOCATIONS OF EXISTING UNDERGROUND UTILITIES (i.e. WATER, SEWER, GAS, TELEPHONE, ELECTRIC, AND CABLE TV) AT LEAST 72 HOURS PRIOR TO ANY EXCAVATION OR CONSTRUCTION. THE CONTRACTOR IS REQUIRED TO IDENTIFY AND PROTECT ALL OTHER UTILITY LINES FOUND IN THE WORK SITE AREA BELONGING TO OTHER OWNERS THAT ARE NOT MEMBERS OF "MISS UTILITY". IF THE CONTRACTOR PERCEIVES THAT A CONFLICT BETWEEN THE UTILITIES AND THE TRAFFIC SIGNAL WILL OCCUR, THE CONTRACTOR SHALL NOTIFY THE PROJECT ENGINEER IMMEDIATELY SO THAT THE CONFLICT MAY BE RESOLVED.
- THE CONTRACTOR SHALL BE RESPONSIBLE FOR REPLACING WITH MATCHING MATERIALS ANY PAVEMENT, PAVEMENT MARKINGS, CURB AND GUTTER, SIDEWALK, ETC. THAT ARE DAMAGED DURING CONSTRUCTION.
- THE CONTRACTOR SHALL BE RESPONSIBLE FOR ALL WORK ZONE SIGNING, DELINEATION, PAVEMENT MARKINGS AND ANY OTHER TRAFFIC CONTROL DEVICES NECESSARY TO PERFORM THE WORK IN ACCORDANCE WITH THE VIRGINIA WORK AREA PROTECTION MANUAL. UPON COMPLETION ON THE WORK, THE CONTRACTOR SHALL IMMEDIATELY REMOVE ALL TEMPORARY DEVICES.
- THE CONTRACTOR SHALL SUBMIT "AS-BUILT" DRAWINGS TO ARLINGTON COUNTY UPON JOB COMPLETION AND FINAL INSPECTION.
- EXISTING CONTROLLER AND CABINETS SPECIFIED TO BE REMOVED SHALL BE RETURNED TO ARLINGTON COUNTY.
- CCTV LOCATIONS AND QUANTITIES ARE FOR PLANNING PURPOSES ONLY. THE FINAL LOCATIONS SHALL BE FIELD LOCATED.
- CONTRACTOR SHALL SEQUENCE INSTALLATION OF NEW MAST ARM SIGNAL POLE TO MINIMIZE DOWNTIME. CONTRACTOR IS REQUIRED TO COORDINATE WITH POLICE TO OBTAIN TRAFFIC CONTROL ASSISTANCE DURING ANY SIGNAL OUTAGE.
- EXISTING OR PROPOSED SIGNAL CONDUIT MAY NEED TO BE OFFSET TO ACCOMMODATE PROPOSED STORM PIPE INSTALLATION OR OTHER PROPOSED UTILITY INSTALLATIONS.

Signal Notes:

A. POLES AND FOUNDATIONS

- MAST ARM LENGTH IS TO BE AS SHOWN ON PLAN AND ALL MAST ARMS ARE TO BE FIELD DRILLED ONLY.
- MAST ARM POLES SHALL BE DESIGNED TO THE PROPER HEIGHT TO ACCOMMODATE A STREET LIGHT LUMINAIRE AND INSTALLED IN ACCORDANCE WITH ARLINGTON COUNTY TRAFFIC SIGNAL & STREETLIGHT SPECIFICATIONS.
- MAST ARM POLE FOUNDATIONS SHALL BE INSTALLED IN ACCORDANCE WITH ARLINGTON COUNTY STANDARDS AND SPECIFICATIONS. ALL POLES SHALL HAVE A MINIMUM 6-BOLT PATTERN.
- AT THE COUNTY'S REQUEST, THE CONTRACTOR SHALL DIG TEST PITS TO VERIFY THAT SIGNAL POLE FOUNDATIONS WILL NOT CONFLICT WITH UNDERGROUND UTILITIES AND THAT FOUNDATIONS WILL FIT WITHIN THE EXISTING RIGHT-OF-WAY.
- SIGNAL POLES AND MAST ARMS SHALL BE NON-ORNAMENTAL. COBRA LIGHTING SHALL BE LED.
- THE CONTRACTOR IS RESPONSIBLE FOR OBTAINING POLE FOUNDATION DESIGNS FOR ANY MAST ARM POLES. THE CONTRACTOR SHALL SUBMIT REQUIRED STRUCTURAL DRAWINGS AND CALCULATIONS FOR REVIEW PRIOR TO STARTING FORM WORK FOR THE FOUNDATIONS.

B. CONTROLLER AND FOUNDATION

- NEW CONTROLLER CABINETS SHALL INCLUDE BATTERY BACKUP PER ARLINGTON COUNTY REQUIREMENTS.
- CONTROLLER SHALL BE INTELIGHT X-3 AND SHALL BE INSTALLED AND SET AS FOLLOWS:
2.1 TO REST IN PHASE 2 & 6 GREEN INTERVAL
2.2 TO START/RESTART IN PHASE 2 & 6 YELLOW CHANGE INTERVAL
- THE CONTROLLER CABINET AND FOUNDATION SHALL BE INSTALLED IN ACCORDANCE WITH ARLINGTON COUNTY TRAFFIC SIGNAL & STREETLIGHT SPECIFICATIONS 66-01, 66-02, AND 70-01.
- THE COUNTY WILL PROVIDE SIGNAL TIMINGS TO THE CONTRACTOR FOR THE CONTROLLER WHEN THE INTERSECTION IS TOTALLY PREPARED FOR OPERATION. THE CONTRACTOR SHALL NOTIFY THE COUNTY IN WRITING 10 DAYS IN ADVANCE OF REQUIRING FINAL TIMINGS.

C. TRAFFIC SIGNAL HEADS

- ALL NEW VEHICULAR SIGNAL SECTIONS SHALL BE 12 INCHES IN DIAMETER CAST ALUMINUM WITH LED DISPLAYS.
- PEDESTRIAN SIGNAL HEAD SECTIONS SHALL BE CAST ALUMINUM WITH LED DISPLAYS (COUNTDOWN).
- ALL SIGNAL HEADS SHALL BE YELLOW IN COLOR.
- ALL SIGNAL HEADS SHALL BE INSTALLED WITH RETROREFLECTIVE BACKPLATES PER VDOT STANDARDS AND SPECIFICATIONS.

D. DETECTORS

- ALL NEW PEDESTRIAN PUSH BUTTON STATIONS SHALL CONFORM TO ARLINGTON COUNTY'S SPECIFICATIONS FOR ACCESSIBLE SIGNAL DESIGN AND SHALL USE POLARA VIBRO-TACTILE/AUDIO PUSH BUTTON ASSEMBLIES UNLESS OTHERWISE SPECIFIED. THE CONTRACTOR SHALL PROVIDE EXTENDER BRACKETS IF NEEDED TO MAKE PUSHBUTTONS ACCESSIBLE BY WHEELCHAIR. THE PUSHBUTTON ASSEMBLY SHALL CONTAIN A MOUNTING BRACKET TO ALLOW THE R10-3E SIGN TO BE MOUNTED DIRECTLY TO THE PUSHBUTTON.
- NEW OVERHEAD VIDEO DETECTION SHALL BE INSTALLED IN ACCORDANCE WITH COUNTY REQUIREMENTS.
- EMERGENCY VEHICLE PRE-EMPTION (EVP) EQUIPMENT (GTT MODEL M711 OR M721), OR APPROVED SUBSTITUTE, SHALL BE INSTALLED COMPLETE WITH DISCRIMINATOR CARDS, WIRING, ETC. IN ACCORDANCE WITH ARLINGTON COUNTY STANDARDS.
- EVP TO BE MOUNTED ON VEHICLE HEAD MOUNTING BRACKET OR AS APPROVED BY THE ENGINEER IN THE FIELD. EVP SHALL INCLUDE CONFIRMATION LIGHTS.

E. CONDUIT, CONDUCTORS, AND ELECTRICAL

- ALL JUNCTION BOXES SHALL HAVE THE WORDS "ARLINGTON COUNTY TRANSPORTATION" CAST IN THE LID. ALL JUNCTION BOXES SHALL BE INSTALLED PER STANDARDS 61-02, 61-03, AND 61-04.
- METER PEDESTAL SHALL BE INSTALLED PER COUNTY STANDARDS. UNDERGROUND SERVICE SHALL BE OBTAINED FROM THE NEAREST UTILITY POLE OR SERVICE POINT. CONTRACTOR IS RESPONSIBLE FOR OBTAINING APPROVAL AND COORDINATING WITH POWER SERVICE COMPANY FOR CONNECTION.
- CONDUIT SYSTEM SHALL BE ADDED TO CONNECT EXISTING COMMUNICATION CABLE PLANT TO THE NEW CONTROLLER CABINET LOCATION AS DIRECTED BY THE COUNTY ENGINEER.
- ALL CONDUIT ENTERING INTO JUNCTION BOXES SHALL NOT EXTEND OVER 3" MAXIMUM NOR 2" MINIMUM INSIDE THE JUNCTION BOXES, AND SHALL BE FITTED WITH BELL ENDS OR BUSHING.
- ALL JUNCTION BOXES SHALL HAVE A GROUND ROD INSTALLED. ALL JUNCTION BOXES SHALL BE PROPERLY CONNECTED TO THE INTERSECTION GROUNDING SYSTEM. METAL LIDS SHALL BE BONDED TO THE GROUNDING SYSTEM.
- CONTRACTOR IS TO VERIFY DEPTHS OF UTILITIES AT PROPOSED CONDUIT CROSSINGS PRIOR TO EXCAVATING CONDUIT TRENCHES OR BORING.
- ALL CONDUITS BENEATH ROADWAYS SHALL BE DIRECTIONAL DRILLED UNLESS DIRECTED OTHERWISE BY THE COUNTY CONSTRUCTION MANAGER. WHERE DIRECTED ON THE PLANS OR BY THE CONSTRUCTION MANAGER, THE CONTRACTOR SHALL INSTALL SPARE CONDUITS WITH PULL TAPE AND TRACER WIRE FOR ROAD CROSSINGS.
- ALL EXISTING CONDUIT AND CABLES ARE BASED ON RECORD DRAWINGS OR WERE ESTIMATED. CONTRACTOR SHALL VERIFY CONDUIT FILL CAPACITY IN EXISTING CONDUITS PRIOR TO BEGINNING CONSTRUCTION. THE CONTRACTOR SHALL NOTIFY ARLINGTON COUNTY IF CONDUIT CAPACITY IS NOT AVAILABLE IN EXISTING CONDUIT FOR NEW CABLES.
- NEW CCTV CAMERAS SHALL BE INSTALLED IN ACCORDANCE WITH ARLINGTON COUNTY REQUIREMENTS. CONTRACTOR SHALL CONFIRM MOUNTING LOCATION OF CCTV CAMERA WITH COUNTY PRIOR TO INSTALLATION.

E. CONDUIT, CONDUCTORS, AND ELECTRICAL (CONT.)

- CONTRACTOR TO VERIFY THE CONDUIT AND % FILL. IF THERE IS NOT ENOUGH CAPACITY IN CONDUIT, THEN THE CONTRACTOR SHALL INSTALL NEW CONDUIT.
- ALL PROPOSED CONDUIT SHALL HAVE #6 AWG (EGC) & TRACER WIRE FOR GROUNDING SYSTEM.
- REMOVE ALL EXISTING UNUSED RISERS, JUNCTION BOXES, AND CABLES.

F. SIGNS

- ALL MAST ARM SIGNS SHALL BE MOUNTED IN ACCORDANCE WITH ARLINGTON COUNTY STANDARDS. SIGNS SHALL BE FURNISHED AND INSTALLED BY THE CONTRACTOR UNLESS DIRECTED OTHERWISE.
- STREET NAME SIGNS SHALL HAVE A WHITE LEGEND ON GREEN BACKGROUND. CONTRACTOR SHALL SUBMIT SIGN DETAILS TO COUNTY TO REVIEW. THE DIMENSIONS PROVIDED ON PLANS ARE ESTIMATED.

G. DEMOLITION/SALVAGE

- ALL EXISTING SIGNAL EQUIPMENT IS TO BE REMOVED & RETURNED TO ARLINGTON COUNTY DEPARTMENT OF ENVIRONMENTAL SERVICES LOCATED AT 4300 29TH ST S., ARLINGTON, VA 22206.
- ALL EXISTING SIGNAL POLE FOUNDATIONS SHALL BE DEMOLISHED IN ACCORDANCE WITH ARLINGTON COUNTY SPECIFICATIONS. ANY REQUIRED RESTORATION RESULTING FROM THE REMOVAL OF EXISTING SIGNAL INFRASTRUCTURE SHALL BE THE CONTRACTOR'S RESPONSIBILITY TO REMEDY AND SHALL BE INCIDENTAL TO THE WORK.

H. COMMUNICATIONS

- EXISTING COUNTY FIBER JUNCTION BOXES AND CONDUITS CONTAIN LIVE FIBER OPTIC CABLES. THE CONTRACTOR SHALL NOT CUT OR DAMAGE THE COUNTY'S EXISTING FIBER CABLES.
- ALL FIBER OPTIC CABLE INSTALLATION, REMOVAL, SPLICING, AND TESTING SHALL BE PERFORMED BY THE COUNTY AT THE CONTRACTOR'S EXPENSE. CONTRACTOR MAY CONTACT DIRECTLY WITH THE COUNTY'S FIBER CONTRACTORS. UPON REQUEST 703-228-7726, THE COUNTY WILL PROVIDE THE CONTACT INFORMATION FOR CURRENT QUALIFIED COUNTY FIBER CONTRACTORS.
- CONTACT ARLINGTON COUNTY DTS FOR FIBER OPTIC CABLE REMOVAL OR INSTALLATION AT LEAST 10 BUSINESS DAYS IN ADVANCE.
- CONTRACTOR SHALL FURNISH FIBER PATCH PANEL FOR INSTALLATION BY THE COUNTY. FIBER PIGTAIL SHALL BE APPROPRIATE LENGTH TO ALLOW FOR 50 FEET OF SLACK IN EACH INTERMEDIATE JUNCTION BOX. CONTRACTOR SHALL SUBMIT A SHOP DRAWING OF THE PATCH PANEL (INDICATING THE TAIL LENGTH) FOR COUNTY REVIEW PRIOR TO ORDERING.
- THE CONTRACTOR SHALL BE RESPONSIBLE FOR THE INSTALLATION OF PROPOSED JUNCTION BOXES AND CONDUITS INCLUDING ALL APPURTENANCES SUCH AS GROUND RODS, TRACER WIRE, PULL TAPE, ETC.
- ALL NEW CONDUITS SHALL HAVE PULL TAPE INSTALLED BETWEEN JUNCTION BOXES AND TRACER WIRE INSTALLED WITHIN OR BESIDE AT LEAST ONE OF THE CONDUITS. TRACER WIRE SHALL BE CONNECTED TO THE GROUND RODS INSTALLED IN THE ADJACENT JUNCTION BOXES.
- DO NOT SPLICE TRACER WIRE.

I. INSPECTIONS

- THE CONTRACTOR SHALL CONTACT THE COUNTY CONSTRUCTION MANAGER FOR INSPECTIONS THROUGHOUT CONSTRUCTION AS REQUIRED BY THE CONSTRUCTION MANAGER.
- THE COUNTY SHALL VERIFY POLE LOCATIONS PRIOR TO EXCAVATION. THE CONTRACTOR SHALL NOTIFY MR. SHAHID MOHIUDDIN, 703-228-7555 TO SCHEDULE INSPECTION PRIOR TO EXCAVATION, AND AGAIN PRIOR TO POURING CONCRETE. STAKEOUT IS THE RESPONSIBILITY OF THE CONTRACTOR UNLESS DIRECTED OTHERWISE.
- THE CONTRACTOR SHALL CONTACT THE COUNTY CONSTRUCTION MANAGER WITHIN 7 BUSINESS DAYS OF SIGNAL ACTIVATION. ALL POWER AND COMMUNICATIONS SHALL BE IN OPERATION AT THE TIME OF ACTIVATION UNLESS APPROVED BY THE COUNTY CONSTRUCTION MANAGER.



DEPARTMENT OF ENVIRONMENTAL SERVICES
FACILITIES & ENGINEERING DIVISION
ENGINEERING BUREAU
2100 CLARENDON BOULEVARD, SUITE 813
ARLINGTON, VA 22201
PHONE: 703.228.3629
FAX: 703.228.3606

COPYRIGHT © 2023 ARLINGTON COUNTY VIRGINIA - ALL RIGHTS RESERVED

SEAL

REVISIONS DATE

REVISIONS	DATE

Project Name and Location

Columbia Pike and S. Rolfe Street
Intersection Realignment

Signals Notes

ID # 357

Project Number: DS41

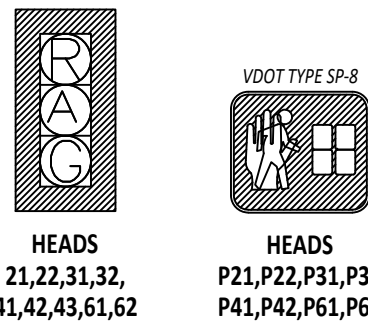
DESIGNED: JTM
DRAWN: JTM
CHECKED: JEL

PLOTTED: MARCH 29 2023

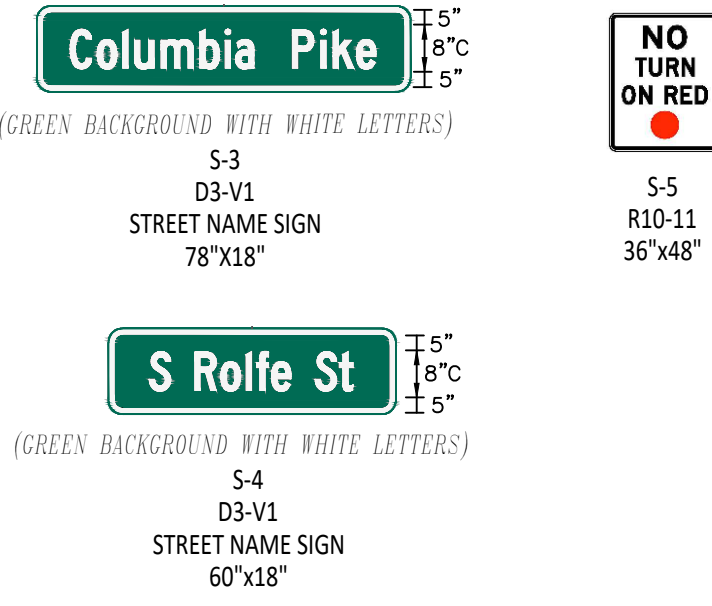
SCALE:

N.T.S.

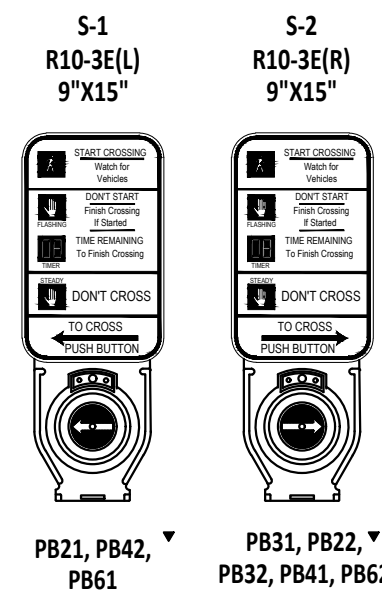
PROPOSED SIGNALS



PROPOSED SIGNS



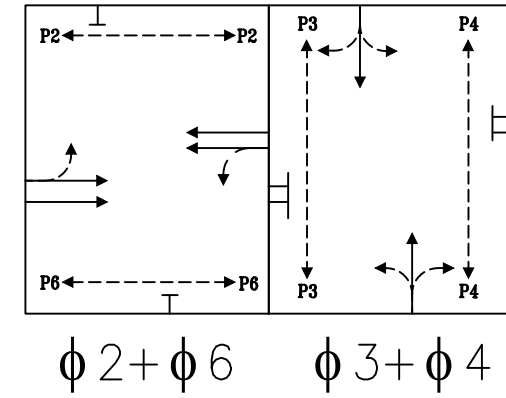
ACCESSIBLE PEDESTRIAN PUSHBUTTON



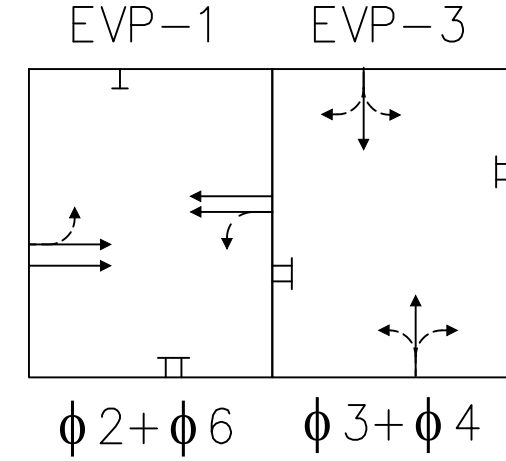
PUSHBUTTON	WALK MESSAGE
PB31, PB32 PB41, PB42	"COLUMBIA PIKE, WALK SIGN IS ON TO CROSS COLUMBIA PIKE."
PB21, PB22 PB61, PB62	"ROLFE STREET, WALK SIGN IS ON TO CROSS ROLFE STREET."

* ACCESSIBLE PUSHBUTTON SYSTEM SHALL BE POLARA SYSTEM CONFORMING TO ARLINGTON COUNTY SPECIFICATIONS AND SHALL INCLUDE A POLARA CENTRAL CONTROL UNIT.

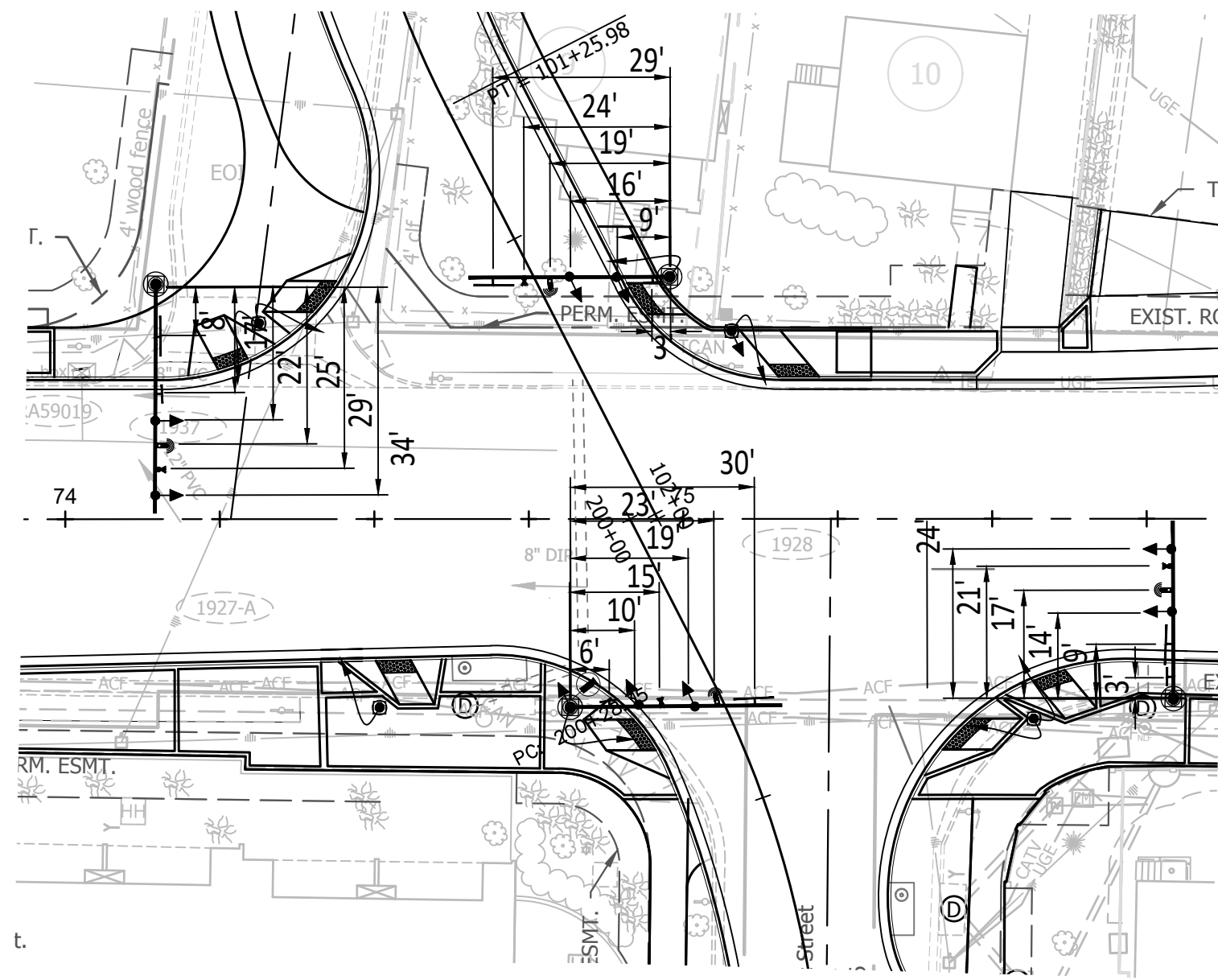
PROPOSED PHASING DIAGRAM



PREEMPTION PHASING DIAGRAM

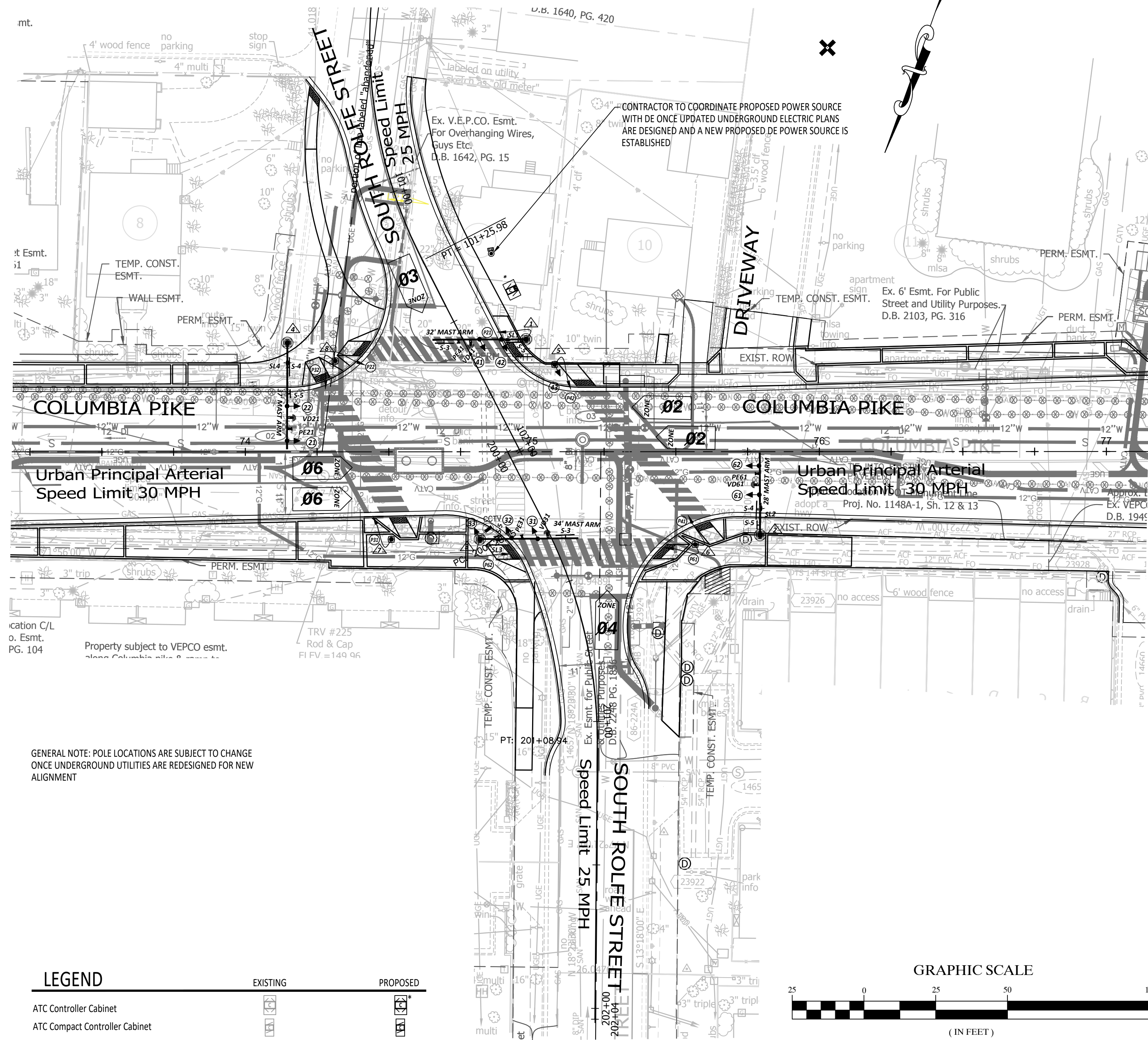


POLE EQUIPMENT DETAIL
(SCALE: 1"=25')



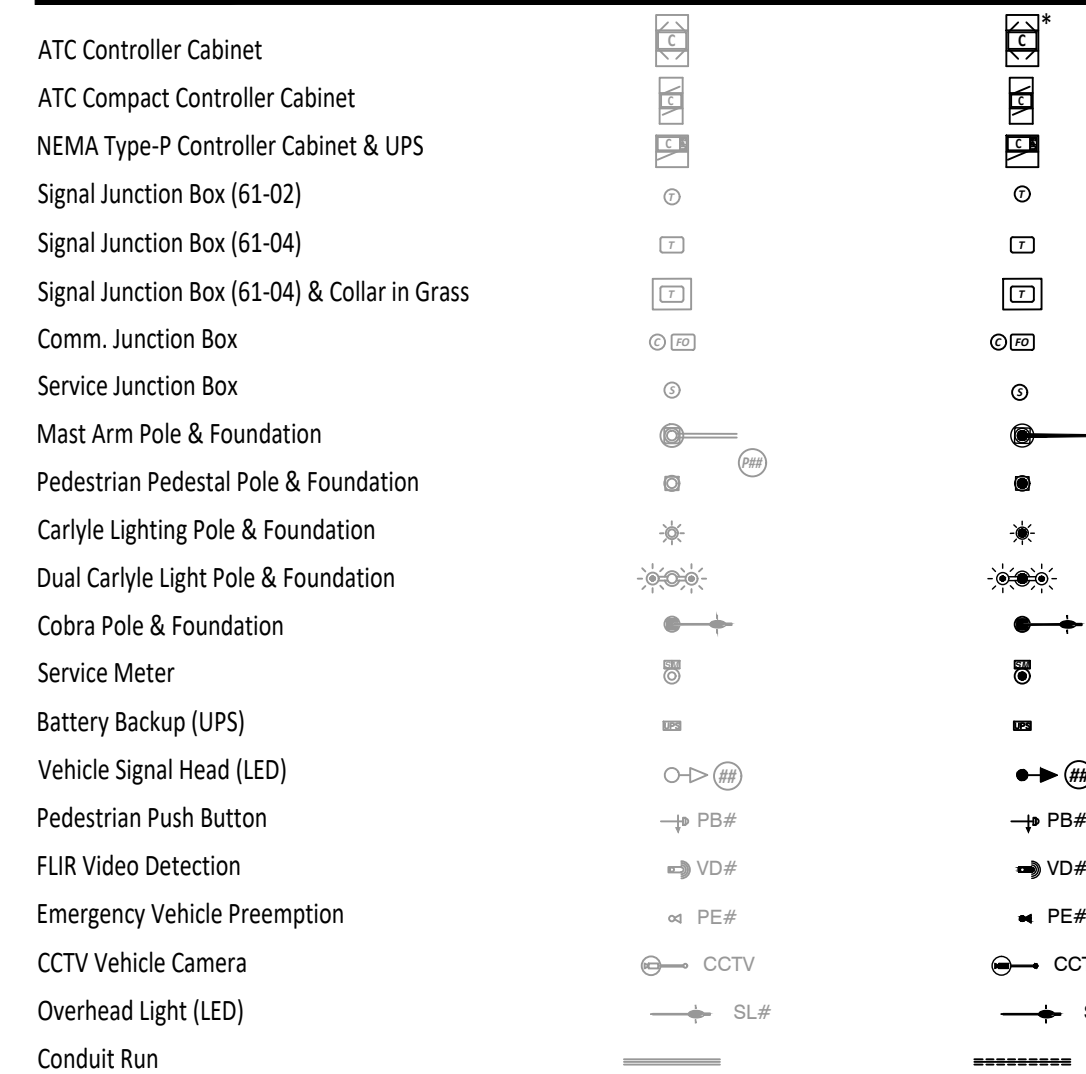
No.	POLE IDENTIFICATION	STANDARD TYPE (POLE HEIGHT)	STANDARD				LUM. LED (4)	POLE SIGNAL MOUNTING				STREET NAME SIGN
			SIG. M.A. ORIENT.	SIG. M.A.	LUM. M.A. ORIENT.	LUM. M.A.		VEHICLE & PEDESTRIAN HEADS	PED. PUSH BUTTONS	SIGNS	VIDEO DETECTOR PREEMPTION & CCTV	
△	357-MA-01-SW	MAST ARM POLE (22')	STD. (180°)	32'	STD. (180°)	6'	69W	41, 42, P21	PB21	S-5, S-1	VD41, PE41	S-3
△	357-MA-01-NW	MAST ARM POLE (22')	STD. (180°)	28'	STD. (180°)	6'	69W	61, 62	-	S-5	VD61, PE61	S-4
△	357-MA-01-NE	MAST ARM POLE (22')	STD. (180°)	34'	STD. (180°)	6'	69W	31, 32, 33, P62	PB62	S-5, S-2	CCTV, VD31, PE31	S-3
△	357-MA-01-SE	MAST ARM POLE (22')	STD. (180°)	37'	STD. (180°)	6'	69W	21, 22	-	S-5	VD21, PE21	S-4
△	357-PP-01-SW	PEDESTAL POLE (12')	-	-	-	-	-	43, P42	PB42	S-1	-	-
△	357-PP-01-NW	PEDESTAL POLE (12')	-	-	-	-	-	P41, P61	PB41, PB61	S-1, S-2	-	-
△	357-PP-01-NE	PEDESTAL POLE (12')	-	-	-	-	-	P31	PB31	S-2	-	-
△	357-PP-01-SE	PEDESTAL POLE (12')	-	-	-	-	-	P22, P32	PB22, PB32	(2)S-2	-	-

TRAFFIC SIGNAL PLAN DETAIL
(SCALE: 1"=25')

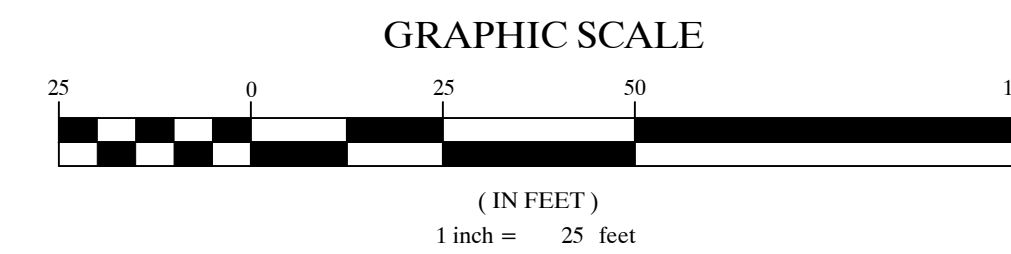


GENERAL NOTE: POLE LOCATIONS ARE SUBJECT TO CHANGE ONCE UNDERGROUND UTILITIES ARE REDESIGNED FOR NEW ALIGNMENT

LEGEND



* denotes front of the cabinet



SEAL

REVISIONS DATE

Project Name and Location
Columbia Pike and S. Rolfe Street Intersection Realignment

Signals Plans
ID # 357
Project Number: DS41

DESIGNED: JTM
DRAWN: JTM
CHECKED: JEL

PLOTTED: MARCH 29 2023

SCALE:

1" = 25'