

Finance Department  
Fifty Raupp Blvd.  
Buffalo Grove, IL 60089-2198  
Phone 847-459-2500  
Fax 847-459-7906

**Bernard Drive Contract 1 Project Addendum #2**

---

**TO:** Prospective Respondents and Other Interested Parties  
**FROM:** The Village of Buffalo Grove Finance Department  
**ISSUE DATE:** November 8, 2023  
**SUBJECT:** ADDENDUM #2

Note: This Addendum is hereby declared a part of the original bid and contract documents and in case of conflict, the provisions in the following Addendum shall govern.

---

The following changes and clarifications shall be made to the Bid Documents for the Bernard Drive Contract 1 Project.

**Item #1**

The Cook County Division of Transportation and Highways (CCDOTH) will require a bond and insurance for work within County right-of-way. Information is below.

Bond

Please see bond and insurance \$20,000 directions (pages 1-2) on our web site at <https://www.cookcountyil.gov/service/construction-permits-online-payment> to help the contractor navigate the process.

Insurance

Please see bond and insurance \$20,000 directions (pages 3-5) on our web site at <https://www.cookcountyil.gov/service/construction-permits-online-payment> to help the contractor navigate the process. Attached is a copy of our sample COI. The contractor must meet the minimums.

The insurance certificate can be emailed to [hwy.permits@cookcountyil.gov](mailto:hwy.permits@cookcountyil.gov) . Title the email 2023-02614 Insurance.

This work will not be paid for separately but shall be included in the cost of the project.

**Item #2**

Additional information is being provided regarding the proposed sanitary sewer manhole to be constructed at the intersection of Bernard Drive at Navajo Trail (Sta. 82+28.63, 13.74' Rt). The attached plan sheet (28 of 97) shall replace the plan sheet that was included in the bid plans. The cost of completing the work, as shown on the revised sheet, shall be included in the cost of MANHOLES, SANITARY, 5'-DIAMETER, TYPE 1 FRAME, CLOSED LID.

**Item #3**

The quantity for INLET FILTERS (Item 7) has increased from 43 Each to 45 Each. A new pay item has been added for CATCH BASINS TO BE ADJUSTED (Item 40). The quantity for this work is 2 Each. This additional work is required because the limits of reconstruction on Melinda Lane have been extended north. Attached to this addendum are the following:

Base Bid Schedule of Prices – Replace the original bid schedule of prices, in its entirety, with the attached.

Replace plan sheets 3 and 4 (Summary of Quantities), 10 (Existing Conditions and Removal Items), 14 (Roadway Plan and Profile), 20 (Erosion Control and Landscaping Plan), and 36 (ADA Ramp Details) with the attached plan sheets.

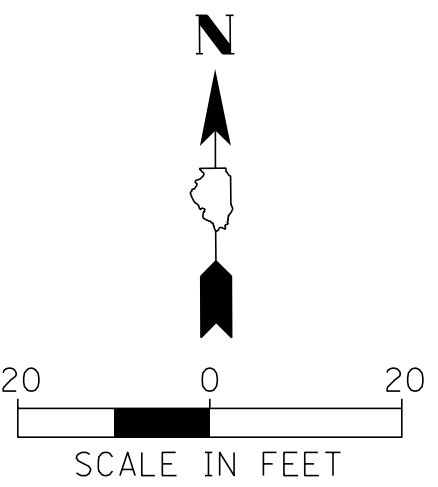
PROSPECTIVE RESPONDENTS ARE TO ACKNOWLEDGE RECEIPT OF ADDENDUM #2. AND SHALL INCLUDE AND NOTE THIS ADDENDUM IN YOUR RESPONSE.

RESPONDENT: \_\_\_\_\_

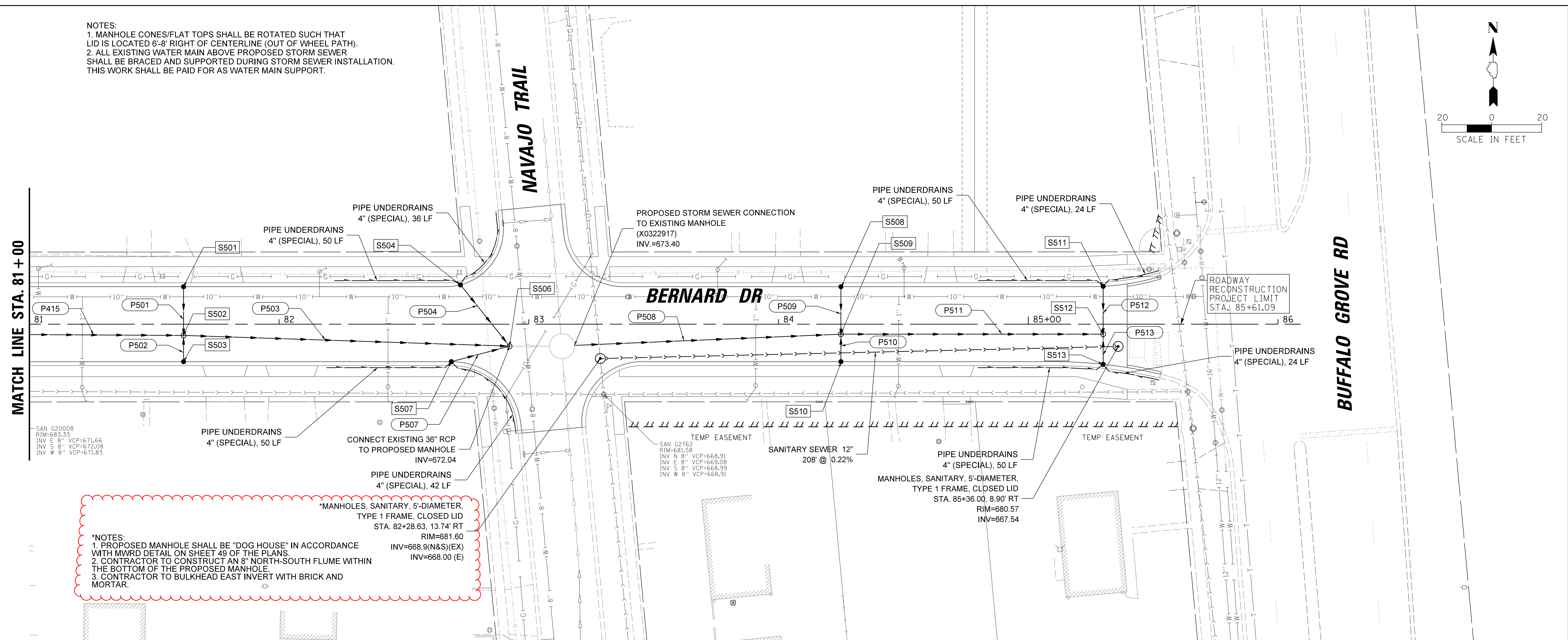
SIGNED: \_\_\_\_\_ DATE: \_\_\_\_\_

TITLE : \_\_\_\_\_

NOTES:  
 1. MANHOLE CONES/FLAT TOPS SHALL BE ROTATED SUCH THAT LID IS LOCATED 6'-8" RIGHT OF CENTERLINE (OUT OF WHEEL PATH).  
 2. ALL EXISTING WATER MAIN ABOVE PROPOSED STORM SEWER SHALL BE BRACED AND SUPPORTED DURING STORM SEWER INSTALLATION. THIS WORK SHALL BE PAID FOR AS WATER MAIN SUPPORT.



MATCH LINE STA. 81+00

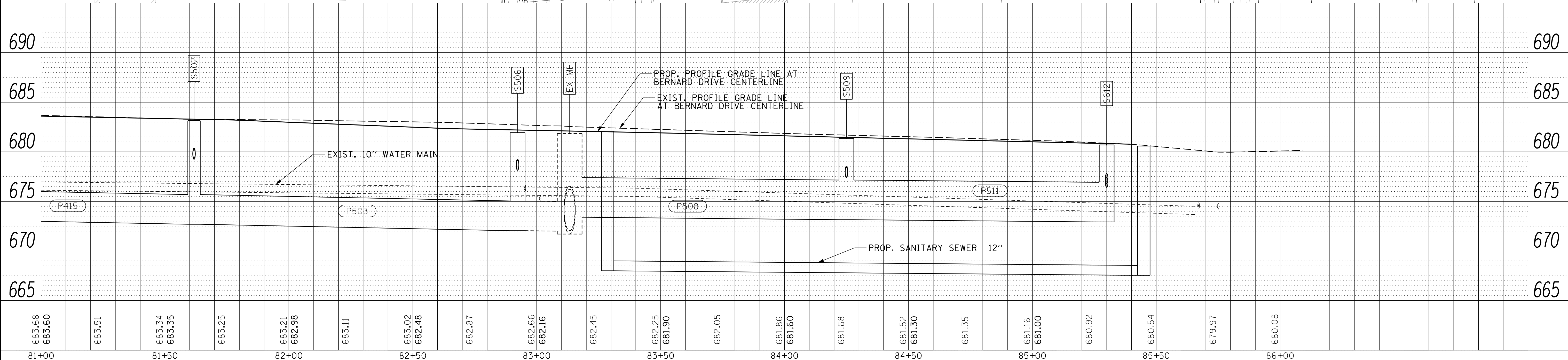


\*NOTES:  
 1. PROPOSED MANHOLE SHALL BE "DOG HOUSE" IN ACCORDANCE WITH MWRD DETAIL ON SHEET 49 OF THE PLANS.  
 2. CONTRACTOR TO CONSTRUCT AN 8" NORTH-SOUTH FLUME WITHIN THE BOTTOM OF THE PROPOSED MANHOLE.  
 3. CONTRACTOR TO BULKHEAD EAST INVERT WITH BRICK AND MORTAR.

\*MANHOLES, SANITARY, 5-DIAMETER, TYPE 1 FRAME, CLOSED LID  
 STA. 82+28.63, 13.74' RT  
 RIM=681.60  
 INV=668.9(N&S)(EX)  
 INV=668.00 (E)

SAN C2762  
 RIM=681.58  
 INV N 8" VCP=668.91  
 INV E 8" VCP=669.08  
 INV S 8" VCP=668.99  
 INV W 8" VCP=668.91

PIPE UNDERDRAINS  
 4" (SPECIAL), 50 LF  
 MANHOLES, SANITARY, 5-DIAMETER, TYPE 1 FRAME, CLOSED LID  
 STA. 85+36.00, 8.90' RT  
 RIM=680.57  
 INV=667.54



FILE NAME = N:\BuffaloGrove\200385\Civil\VEG-ah+CL-DPP\_06.dgn

683.68	683.60	683.51	683.34	683.35	683.25	683.21	682.98	683.11	683.02	682.48	682.87	682.66	682.16	682.45	682.25	681.90	682.05	681.86	681.60	681.68	681.52	681.30	681.35	681.16	681.00	680.92	680.54	679.97	680.08
81+00		81+50			82+00			82+50			83+00			83+50			84+00			84+50			85+00			85+50		86+00	

**CHRISTOPHER B. BURKE ENGINEERING, LTD.**  
 9575 W. Higgins Road, Suite 600  
 Rosemont, Illinois 60018  
 (847) 823-0500

CLIENT: **Village of Buffalo Grove**  
 51 RAUPP BOULEVARD  
 BUFFALO GROVE, ILLINOIS 60089  
 (847) 459-2500

NO.	DATE	DESCRIPTION OF REVISION	CHKD.	DGN.	EMB.
1	11/07/23	ADDED SAN MH DETAILS			
USER NAME = jjezierny					
PLOT DATE = 11/7/2023					

TITLE: **BERNARD DRIVE DRAINAGE PLAN AND PROFILE**  
 SCALE: 1:20  
 SHEET 6 OF 8 SHEETS STA. 81+00 TO STA. END  
 SECTION: 20-00108-01-RS  
 DATE: 11/7/2023  
 SHEET 28 OF 97

## SCHEDULE OF PRICES

### Base Bid Scope of Work:

For the complete scope of work and information covering these items, see the plans and specifications.

### BERNARD DRIVE RECONSTRUCTION

The following Unit Prices will be used for basis of payment and shall be the bidder's proposal for completing the entire improvements herein.

### BASE BID

<u>ITEM NO.</u>	<u>Item</u>	<u>Quantity</u>	<u>Unit</u>	<u>Unit Price</u>	<u>Total Price</u>
1	TREE REMOVAL (6 TO 15 UNITS DIAMETER)	86	UNIT		
2	TREE REMOVAL (OVER 15 UNITS DIAMETER)	810	UNIT		
3	TREE ROOT PRUNING	5	EACH		
4	EARTH EXCAVATION	2325	CU YD		
5	REMOVAL AND DISPOSAL OF UNSUITABLE MATERIAL	705	CU YD		
6	GEOTECHNICAL FABRIC FOR GROUND STABILIZATION	13300	SQ YD		
7	INLET FILTERS	45	EACH		
8	AGGREGATE SUBGRADE IMPROVEMENT	200	CU YD		
9	SUBBASE GRANULAR MATERIAL, TYPE B 4"	6310	SQ YD		
10	AGGREGATE BASE COURSE, TYPE B 9"	12000	SQ YD		
11	BITUMINOUS MATERIALS (PRIME COAT)	27000	POUND		
12	BITUMINOUS MATERIALS (TACK COAT)	2594	POUND		
13	LONGITUDINAL JOINT SEALANT	3015	FOOT		
14	PORTLAND CEMENT CONCRETE DRIVEWAY PAVEMENT, 6 INCH	615	SQ YD		
15	PORTLAND CEMENT CONCRETE SIDEWALK 5 INCH	35540	SQ FT		
16	PAVEMENT REMOVAL	12787	SQ YD		
17	HOT-MIX ASPHALT SURFACE REMOVAL, 2"	158	SQ YD		
18	DRIVEWAY PAVEMENT REMOVAL	659	SQ YD		
19	COMBINATION CURB AND GUTTER REMOVAL	6230	FOOT		
20	SIDEWALK REMOVAL	23470	SQ FT		
21	STORM SEWERS, CLASS A, TYPE 1 12"	551	FOOT		
22	STORM SEWERS, CLASS A, TYPE 2 15"	154	FOOT		
23	STORM SEWERS, CLASS A, TYPE 2 18"	240	FOOT		
24	STORM SEWERS, CLASS A, TYPE 2 24"	788	FOOT		
25	STORM SEWERS, CLASS A, TYPE 2 30"	127	FOOT		

<u>ITEM NO.</u>	<u>Item</u>	<u>Quantity</u>	<u>Unit</u>	<u>Unit Price</u>	<u>Total Price</u>
26	STORM SEWERS, CLASS A, TYPE 2 36"	929	FOOT		
27	STORM SEWERS, CLASS A, TYPE 2 48"	212	FOOT		
28	ADJUSTING WATER SERVICE LINES	750	FOOT		
29	DOMESTIC WATER SERVICE BOXES TO BE ADJUSTED	61	EACH		
30	PIPE UNDERDRAINS 4" (SPECIAL)	1100	FOOT		
31	CATCH BASINS, TYPE A, 4'-DIAMETER, TYPE 1 FRAME, OPEN LID	2	EACH		
32	CATCH BASINS, TYPE A, 4'-DIAMETER, TYPE 11 FRAME AND GRATE	39	EACH		
33	MANHOLES, TYPE A, 4'-DIAMETER, TYPE 1 FRAME, CLOSED LID	7	EACH		
34	MANHOLES, TYPE A, 5'-DIAMETER, TYPE 1 FRAME, CLOSED LID	12	EACH		
35	MANHOLES, TYPE A, 6'-DIAMETER, TYPE 1 FRAME, CLOSED LID	8	EACH		
36	MANHOLES, TYPE A, 7'-DIAMETER, TYPE 1 FRAME, CLOSED LID	1	EACH		
37	MANHOLES, TYPE A, 8'-DIAMETER, TYPE 1 FRAME, CLOSED LID	1	EACH		
38	INLETS, TYPE A, TYPE 1 FRAME, OPEN LID	1	EACH		
39	INLETS, TYPE A, TYPE 11 FRAME AND GRATE	3	EACH		
40	CATCH BASINS TO BE ADJUSTED	2	EACH		
41	CATCH BASINS TO BE RECONSTRUCTED WITH NEW TYPE 1 FRAME, CLOSED LID	1	EACH		
42	MANHOLES TO BE ADJUSTED	2	EACH		
43	INLETS TO BE ADJUSTED WITH NEW TYPE 11 FRAME AND GRATE	1	EACH		
44	REMOVING MANHOLES	2	EACH		
45	REMOVING CATCH BASINS	3	EACH		
46	REMOVING INLETS	1	EACH		
47	CONCRETE CURB, TYPE B	200	FOOT		
48	MOBILIZATION	1	L SUM		
49	CHANGEABLE MESSAGE SIGN	70	CAL DA		
50	SIGN PANEL - TYPE 1	131	SQ FT		
51	REMOVE SIGN PANEL ASSEMBLY - TYPE A	3	EACH		
52	RELOCATE SIGN PANEL ASSEMBLY - TYPE A	3	EACH		
53	THERMOPLASTIC PAVEMENT MARKING - LINE 4"	25	FOOT		
54	THERMOPLASTIC PAVEMENT MARKING - LINE 6"	900	FOOT		
55	THERMOPLASTIC PAVEMENT MARKING - LINE 12"	1100	FOOT		
56	THERMOPLASTIC PAVEMENT MARKING - LINE 24"	110	FOOT		
57	GROOVING FOR RECESSED PAVEMENT MARKING 5"	25	FOOT		
58	GROOVING FOR RECESSED PAVEMENT MARKING	900	FOOT		



<u>ITEM NO.</u>	<u>Item</u>	<u>Quantity</u>	<u>Unit</u>	<u>Unit Price</u>	<u>Total Price</u>
	7"				
59	GROOVING FOR RECESSED PAVEMENT MARKING 13"	1100	FOOT		
60	GROOVING FOR RECESSED PAVEMENT MARKING 25"	110	FOOT		
61	MAINTENANCE OF EXISTING TRAFFIC SIGNAL INSTALLATION	1	EACH		
62	ELECTRIC CABLE IN CONDUIT, LEAD-IN, NO. 14 1 PAIR	346	FOOT		
63	DETECTOR LOOP, TYPE I	78	FOOT		
64	REMOVE ELECTRIC CABLE FROM CONDUIT	346	FOOT		
65	PROPOSED STORM SEWER CONNECTION TO EXISTING MANHOLE	1	EACH		
66	STORM SEWER TO BE FILLED	9	CU YD		
67	WATER MAIN SUPPORT	4	EACH		
68	TRENCH BACKFILL (SPECIAL)	4638	CU YD		
69	EXPLORATION TRENCH (SPECIAL)	150	FOOT		
70	TEMPORARY ACCESS (PRIVATE ENTRANCE)	51	EACH		
71	TEMPORARY ACCESS (ROAD)	14	EACH		
72	TEMPORARY RAMP (SPECIAL)	375	SQ YD		
73	DETECTABLE WARNINGS (SPECIAL)	500	SQ FT		
74	CLASS D PATCHES, TYPE IV, 5 INCH (SPECIAL)	419	SQ YD		
75	MANHOLES, SANITARY, 5'-DIAMETER, TYPE 1 FRAME, CLOSED LID	2	EACH		
76	SANITARY MANHOLES TO BE ADJUSTED	15	EACH		
77	FRAMES AND LIDS TO BE ADJUSTED (SPECIAL)	22	EACH		
78	COMBINATION CONCRETE CURB AND GUTTER, TYPE B (SPECIAL)	6098	FOOT		
79	TRAFFIC CONTROL AND PROTECTION, (SPECIAL)	1	L SUM		
80	SUMP PUMP LINE CONNECTION	4	EACH		
81	TRAFFIC CONTROL AND PROTECTION (DETOUR)	1	L SUM		
82	CONCRETE TRUCK WASHOUT	1	L SUM		
83	HOT-MIX ASPHALT DRIVEWAY PAVEMENT, 3"	51	SQ YD		
84	CONSTRUCTION LAYOUT	1	L SUM		
85	STORM SEWER (WATER MAIN REQUIREMENTS) 12 INCH	522	FOOT		
86	STORM SEWER (WATER MAIN REQUIREMENTS) 15 INCH	38	FOOT		
87	STORM SEWER (WATER MAIN REQUIREMENTS) 24 INCH	237	FOOT		
88	STORM SEWER (WATER MAIN REQUIREMENTS) 36 INCH	135	FOOT		
89	SANITARY SEWER 12"	211	FOOT		

<u>ITEM NO.</u>	<u>Item</u>	<u>Quantity</u>	<u>Unit</u>	<u>Unit Price</u>	<u>Total Price</u>
90	CLASS D PATCHES, 4 INCH (SPECIAL)	400	SQ YD		
91	DETECTABLE WARNINGS (FURNISHED BY OTHERS)	150	SQ FT		
92	GENERAL LANDSCAPE RESTORATION (SPECIAL)	4300	SQ YD		
93	HOT-MIX ASPHALT BINDER COURSE, (SPECIAL)	1612	TON		
94	HOT-MIX ASPHALT SURFACE COURSE, (SPECIAL)	1290	TON		
95	MOWING	5	EACH		
96	TEMPORARY EROSION CONTROL SEEDING (SPECIAL)	4300	SQ YD		
97	TEMPORARY MULCH CONTROL 3A (SPECIAL)	4300	SQ YD		

TOTAL BASE BID PRICE IN NUMBERS: \$ \_\_\_\_\_

TOTAL BASE BID PRICE WRITTEN: \$ \_\_\_\_\_

BASE BID			
ITEM NUMBER	DESCRIPTION	UNIT	QUANTITY
1	TREE REMOVAL (6 TO 15 UNITS DIAMETER)	UNIT	86
2	TREE REMOVAL (OVER 15 UNITS DIAMETER)	UNIT	810
3	TREE ROOT PRUNING	EACH	5
4	EARTH EXCAVATION	CU YD	2325
5	REMOVAL AND DISPOSAL OF UNSUITABLE MATERIAL	CU YD	705
6	GEOTECHNICAL FABRIC FOR GROUND STABILIZATION	SQ YD	13300
7	INLET FILTERS	EACH	45
8	AGGREGATE SUBGRADE IMPROVEMENT	CU YD	200
9	SUBBASE GRANULAR MATERIAL, TYPE B 4"	SQ YD	6310
10	AGGREGATE BASE COURSE, TYPE B 9"	SQ YD	12000
11	BITUMINOUS MATERIALS (PRIME COAT)	POUND	27000
12	BITUMINOUS MATERIALS (TACK COAT)	POUND	2594
13	LONGITUDINAL JOINT SEALANT	FOOT	3015
14	PORTLAND CEMENT CONCRETE DRIVEWAY PAVEMENT, 6 INCH	SQ YD	615
15	PORTLAND CEMENT CONCRETE SIDEWALK 5 INCH	SQ FT	35540
16	PAVEMENT REMOVAL	SQ YD	12787
17	HOT-MIX ASPHALT SURFACE REMOVAL, 2"	SQ YD	158
18	DRIVEWAY PAVEMENT REMOVAL	SQ YD	659
19	COMBINATION CURB AND GUTTER REMOVAL	FOOT	6230
20	SIDEWALK REMOVAL	SQ FT	23470
21	STORM SEWERS, CLASS A, TYPE 1 12"	FOOT	551
22	STORM SEWERS, CLASS A, TYPE 2 15"	FOOT	154
23	STORM SEWERS, CLASS A, TYPE 2 18"	FOOT	240
24	STORM SEWERS, CLASS A, TYPE 2 24"	FOOT	788
25	STORM SEWERS, CLASS A, TYPE 2 30"	FOOT	127
26	STORM SEWERS, CLASS A, TYPE 2 36"	FOOT	929
27	STORM SEWERS, CLASS A, TYPE 2 48"	FOOT	212

BASE BID			
ITEM NUMBER	DESCRIPTION	UNIT	QUANTITY
28	ADJUSTING WATER SERVICE LINES	FOOT	750
29	DOMESTIC WATER SERVICE BOXES TO BE ADJUSTED	EACH	61
30	PIPE UNDERDRAINS 4" (SPECIAL)	FOOT	1100
31	CATCH BASINS, TYPE A, 4'-DIAMETER, TYPE 1 FRAME, OPEN LID	EACH	2
32	CATCH BASINS, TYPE A, 4'-DIAMETER, TYPE 11 FRAME AND GRATE	EACH	39
33	MANHOLES, TYPE A, 4'-DIAMETER, TYPE 1 FRAME, CLOSED LID	EACH	7
34	MANHOLES, TYPE A, 5'-DIAMETER, TYPE 1 FRAME, CLOSED LID	EACH	12
35	MANHOLES, TYPE A, 6'-DIAMETER, TYPE 1 FRAME, CLOSED LID	EACH	8
36	MANHOLES, TYPE A, 7'-DIAMETER, TYPE 1 FRAME, CLOSED LID	EACH	1
37	MANHOLES, TYPE A, 8'-DIAMETER, TYPE 1 FRAME, CLOSED LID	EACH	1
38	INLETS, TYPE A, TYPE 1 FRAME, OPEN LID	EACH	1
39	INLETS, TYPE A, TYPE 11 FRAME AND GRATE	EACH	3
40	CATCH BASINS TO BE ADJUSTED	EACH	2
41	CATCH BASINS TO BE RECONSTRUCTED WITH NEW TYPE 1 FRAME, CLOSED LID	EACH	1
42	MANHOLES TO BE ADJUSTED	EACH	2
43	INLETS TO BE ADJUSTED	EACH	1
44	REMOVING MANHOLES	EACH	2
45	REMOVING CATCH BASINS	EACH	3
46	REMOVING INLETS	EACH	1
47	CONCRETE CURB, TYPE B	FOOT	200
48	MOBILIZATION	L SUM	1
49	CHANGEABLE MESSAGE SIGN	CAL DA	70
50	SIGN PANEL - TYPE 1	SQ FT	131
51	REMOVE SIGN PANEL ASSEMBLY - TYPE A	EACH	3
52	RELOCATE SIGN PANEL ASSEMBLY - TYPE A	EACH	3
53	THERMOPLASTIC PAVEMENT MARKING - LINE 4"	FOOT	25
54	THERMOPLASTIC PAVEMENT MARKING - LINE 6"	FOOT	900

FILE NAME = N:\BuffaloGrove\200385\Civil\VEG-ah+CI\_S00\_01.dgn

\* INDICATES SPECIAL PROVISION



FILE NAME = N:\BuffaloGrove\200385\Civil\VEBG-ah-t-CI\_S00\_01.dgn


BASE BID			
ITEM NUMBER	DESCRIPTION	UNIT	QUANTITY
55	THERMOPLASTIC PAVEMENT MARKING - LINE 12"	FOOT	1100
56	THERMOPLASTIC PAVEMENT MARKING - LINE 24"	FOOT	110
57	GROOVING FOR RECESSED PAVEMENT MARKING 5"	FOOT	25
58	GROOVING FOR RECESSED PAVEMENT MARKING 7"	FOOT	900
59	GROOVING FOR RECESSED PAVEMENT MARKING 13"	FOOT	1100
60	GROOVING FOR RECESSED PAVEMENT MARKING 25"	FOOT	110
* 61	MAINTENANCE OF EXISTING TRAFFIC SIGNAL INSTALLATION	EACH	1
62	ELECTRIC CABLE IN CONDUIT, LEAD-IN, NO. 14 1 PAIR	FOOT	346
63	DETECTOR LOOP, TYPE I	FOOT	78
64	REMOVE ELECTRIC CABLE FROM CONDUIT	FOOT	346
* 65	PROPOSED STORM SEWER CONNECTION TO EXISTING MANHOLE	EACH	1
* 66	STORM SEWER TO BE FILLED	CU YD	9
* 67	WATER MAIN SUPPORT	EACH	4
* 68	TRENCH BACKFILL (SPECIAL)	CU YD	4638
* 69	EXPLORATION TRENCH (SPECIAL)	FOOT	150
* 70	TEMPORARY ACCESS (PRIVATE ENTRANCE)	EACH	51
* 71	TEMPORARY ACCESS (ROAD)	EACH	14
* 72	TEMPORARY RAMP (SPECIAL)	SQ YD	375
* 73	DETECTABLE WARNINGS (SPECIAL)	SQ FT	500
* 74	CLASS D PATCHES, TYPE IV, 5 INCH (SPECIAL)	SQ YD	419
* 75	MANHOLES, SANITARY, 5'-DIAMETER, TYPE 1 FRAME, CLOSED LID	EACH	2
* 76	SANITARY MANHOLES TO BE ADJUSTED	EACH	15
* 77	FRAMES AND LIDS TO BE ADJUSTED (SPECIAL)	EACH	22
* 78	COMBINATION CONCRETE CURB AND GUTTER, TYPE B (SPECIAL)	FOOT	6098
* 79	TRAFFIC CONTROL AND PROTECTION, (SPECIAL)	L SUM	1
* 80	SUMP PUMP LINE CONNECTION	EACH	4
* 81	TRAFFIC CONTROL AND PROTECTION (DETOUR)	L SUM	1

BASE BID			
ITEM NUMBER	DESCRIPTION	UNIT	QUANTITY
* 82	CONCRETE TRUCK WASHOUT	L SUM	1
* 83	HOT-MIX ASPHALT DRIVEWAY PAVEMENT, 3"	SQ YD	51
* 84	CONSTRUCTION LAYOUT	L SUM	1
* 85	STORM SEWER (WATER MAIN REQUIREMENTS) 12 INCH	FOOT	522
* 86	STORM SEWER (WATER MAIN REQUIREMENTS) 15 INCH	FOOT	38
* 87	STORM SEWER (WATER MAIN REQUIREMENTS) 24 INCH	FOOT	237
* 88	STORM SEWER (WATER MAIN REQUIREMENTS) 36 INCH	FOOT	135
* 89	SANITARY SEWER 12"	FOOT	211
* 90	CLASS D PATCHES, 4 INCH (SPECIAL)	SQ YD	400
* 91	DETECTABLE WARNINGS (FURNISHED BY OTHERS)	SQ FT	150
* 92	GENERAL LANDSCAPE RESTORATION (SPECIAL)	SQ YD	4300
* 93	HOT-MIX ASPHALT BINDER COURSE, (SPECIAL)	TON	1612
* 94	HOT-MIX ASPHALT SURFACE COURSE, (SPECIAL)	TON	1290
* 95	MOWING	EACH	5
* 96	TEMPORARY EROSION CONTROL SEEDING (SPECIAL)	SQ YD	4300
* 97	TEMPORARY MULCH CONTROL 3A (SPECIAL)	SQ YD	4300

ALTERNATE BID 1			
ITEM NUMBER	DESCRIPTION	UNIT	QUANTITY
1	TREE, CELTIS OCCIDENTALIS CHICAGOLAND, (CHICAGOLAND COMMON HACKBERRY), 2" CALIPER, BALLED AND BURLAPPED	EACH	3
2	TREE, GINKGO BILOBA AUTUMN GOLD (AUTUMN GOLD GINKGO), 2" CALIPER, BALLED AND BURLAPPED	EACH	6
3	TREE, GYMNOCLADUS DIOICUS (KENTUCKY COFFEETREE), 2" CALIPER, BALLED AND BURLAPPED	EACH	2
4	TREE, LIQUIDAMBAR STYRACIFLUA MORAINI (MORAINI SWEETGUM), 2" CALIPER, BALLED AND BURLAPPED	EACH	7
5	TREE, QUERCUS BICOLOR (SWAMP WHITE OAK), 2" CALIPER, BALLED AND BURLAPPED	EACH	1
6	TREE, TAXODIUM DISTICHUM (COMMON BALD CYPRESS), 2" CALIPER, BALLED AND BURLAPPED	EACH	1
7	TREE, TILIA AMERICANA REDMOND (REDMOND AMERICAN LINDEN), 2" CALIPER, BALLED AND BURLAPPED	EACH	2
8	TREE, CLADRSTIS KENTUCKEA (AMERICAN YELLOWWOOD), 2" CALIPER, BALLED AND BURLAPPED	EACH	4

\* INDICATES SPECIAL PROVISION

**CB** **CHRISTOPHER B. BURKE ENGINEERING, LTD.**  
 9575 W. Higgins Road, Suite 600  
 Rosemont, Illinois 60018  
 (847) 823-0500

CLIENT:  **Village of Buffalo Grove**  
 51 RAUPP BOULEVARD  
 BUFFALO GROVE, ILLINOIS 60089  
 (847) 459-2500

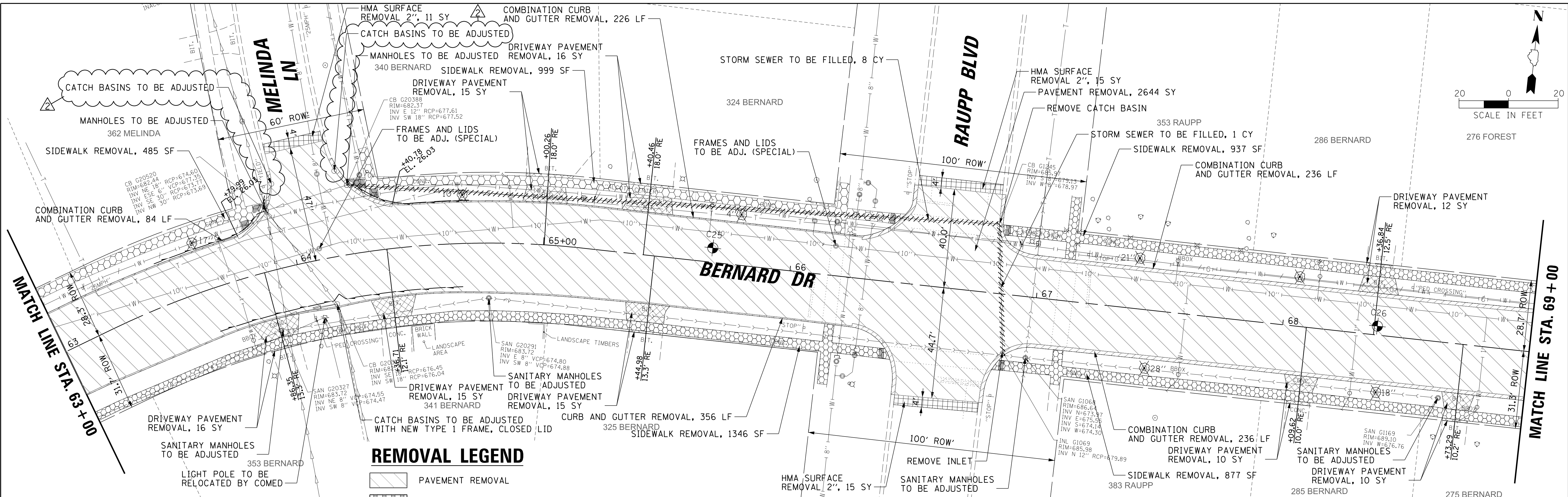
NO.	DATE	NATURE OF REVISION	CHKD.	DSON.	VMR	TITLE:
				DWN.	MAK	
				CHKD.	LMF	
				USER NAME = nhowellindgren		
				PLOT DATE = 11/8/2023		

**BERNARD DRIVE**  
**SUMMARY OF QUANTITIES**

SCALE: 1:20 SHEET 2 OF 2 SHEETS STA. TO STA.

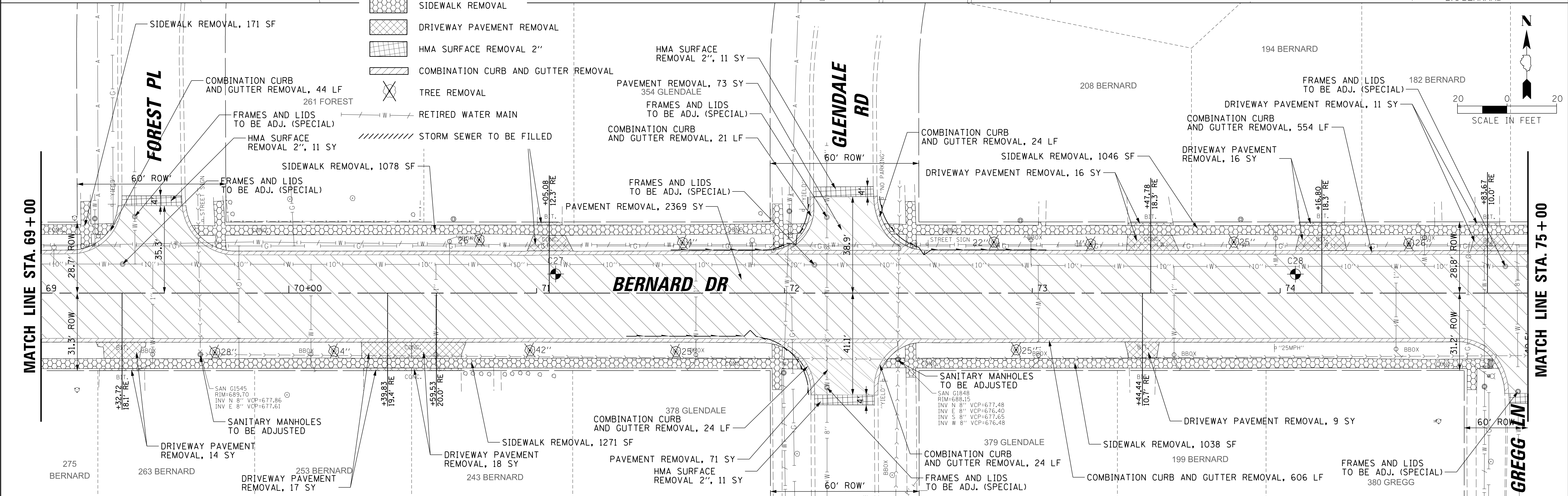
SECTION: 20-00108-01-RS
DATE: 11/8/2023
SHEET 4 OF 97





**REMOVAL LEGEND**

- PAVEMENT REMOVAL
- SIDEWALK REMOVAL
- DRIVEWAY PAVEMENT REMOVAL
- HMA SURFACE REMOVAL 2"
- COMBINATION CURB AND GUTTER REMOVAL
- TREE REMOVAL
- RETIRED WATER MAIN
- STORM SEWER TO BE FILLED



FILE NAME = N:\BuffaloGrove\200385\Civil\VBG-ah+CI-REM\_02.dgn

**CHRISTOPHER B. BURKE ENGINEERING, LTD.**  
 9575 W. Higgins Road, Suite 600  
 Rosemont, Illinois 60018  
 (847) 823-0500



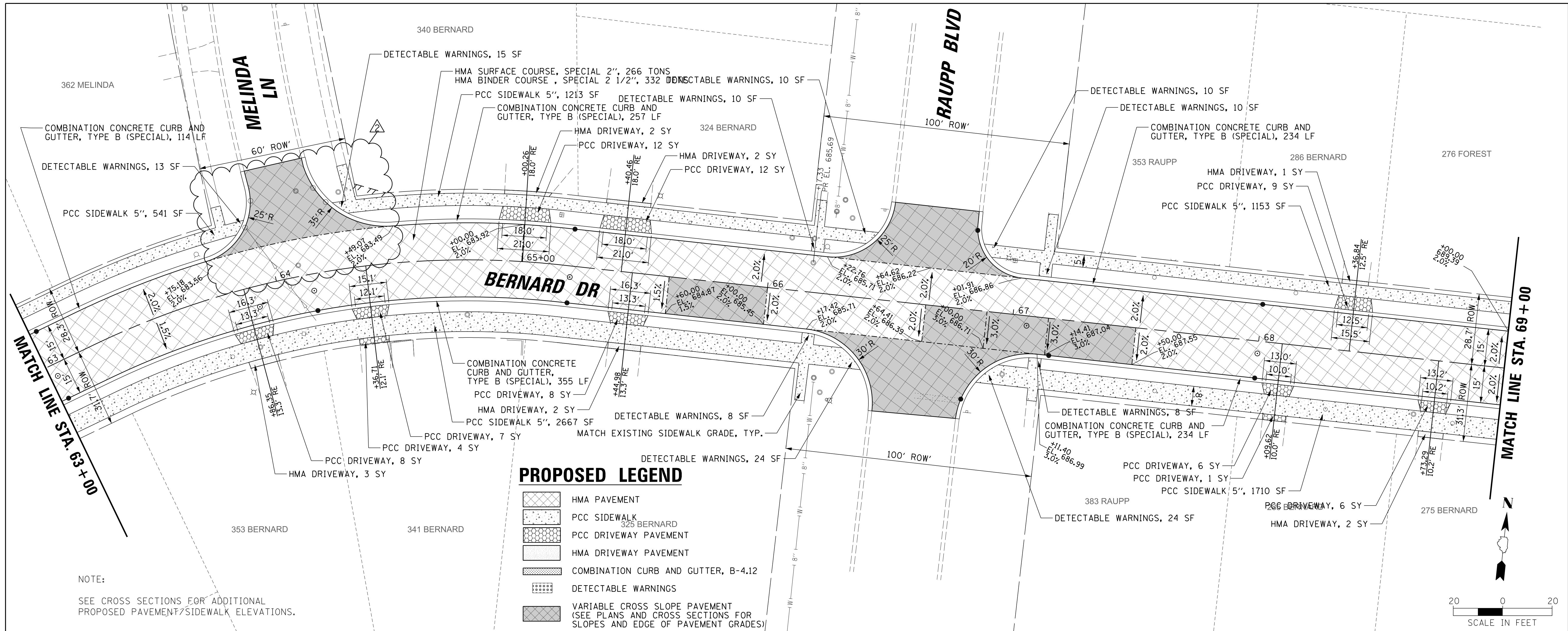
**Village of Buffalo Grove**  
 51 RAUPP BOULEVARD  
 BUFFALO GROVE, ILLINOIS 60089  
 (847) 459-2500

NO.	DATE	NATURE OF REVISION	CHKD.	DSGN.	VMR
2	11/07/23	EXTENDED REMOVAL LIMITS ON MELINDA		DWN.	MAK
				CHKD.	LMF
				USER NAME = nhowellindgren	
				PLOT DATE = 11/8/2023	

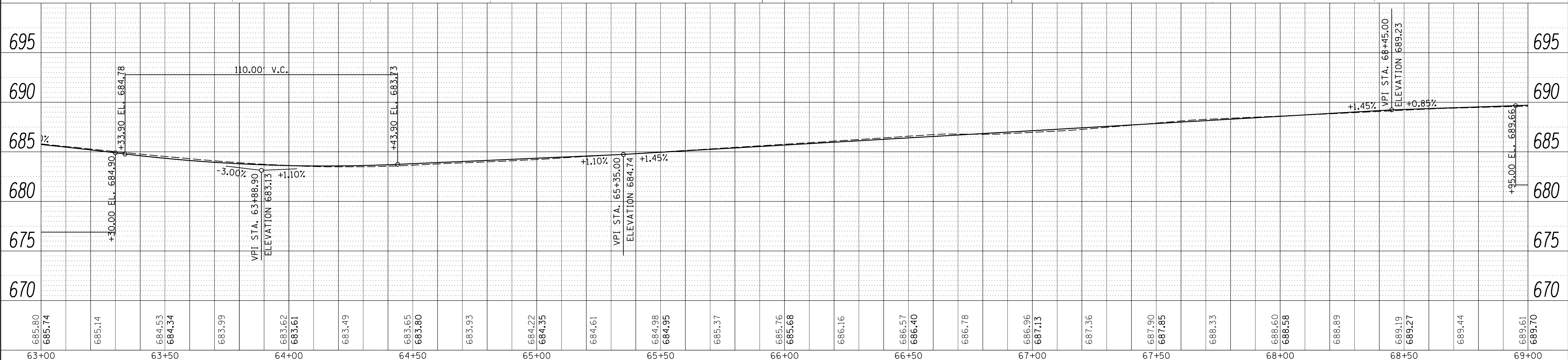
TITLE: **BERNARD DRIVE**  
**EXISTING CONDITIONS AND REMOVAL PLAN**  
 SCALE: 1:20 SHEET 2 OF 3 SHEETS STA. 63+00.00 TO STA. 75+00.00

SECTION: 20-00108-01-RS  
 DATE: 11/8/2023  
 SHEET 10 OF 97





FILE NAME = N:\BuffaloGrove\200385\CL\VEB-ah+CL\_RPP\_03.dgn



**CHRISTOPHER B. BURKE ENGINEERING, LTD.**  
9575 W. Higgins Road, Suite 600  
Rosemont, Illinois 60018  
(847) 823-0500



**Village of Buffalo Grove**  
51 RAUPP BOULEVARD  
BUFFALO GROVE, ILLINOIS 60089  
(847) 459-2500

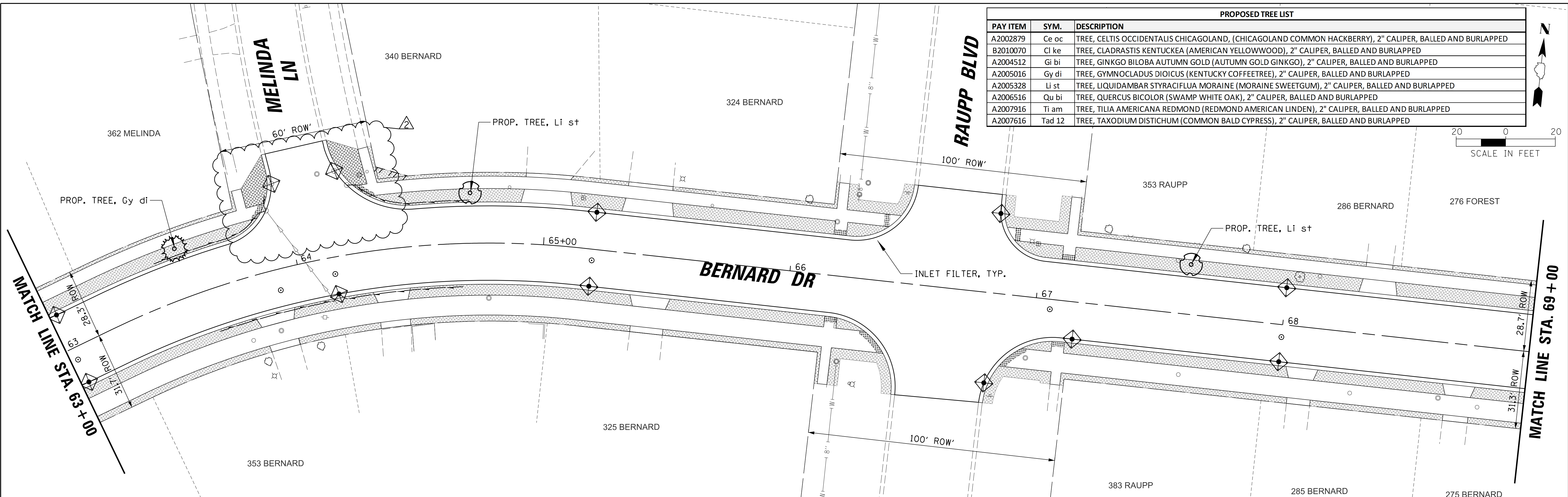
NO.	DATE	NATURE OF REVISION	CHKD.	DGN.	VMR
2	11/07/23	EXTENDED RECONSTRUCTION ON MELINDA		DWN.	MAK
				CHKD.	LMF
				USER NAME = rhowellindgren	
				PLOT DATE = 11/8/2023	

TITLE: **BERNARD DRIVE ROADWAY PLAN AND PROFILE**  
SCALE: 1:20 SHEET 3 OF 6 SHEETS STA. 63+00.00 TO STA. 69+00.00

SECTION: 20-00108-01-RS  
DATE: 11/8/2023  
SHEET 14 OF 97

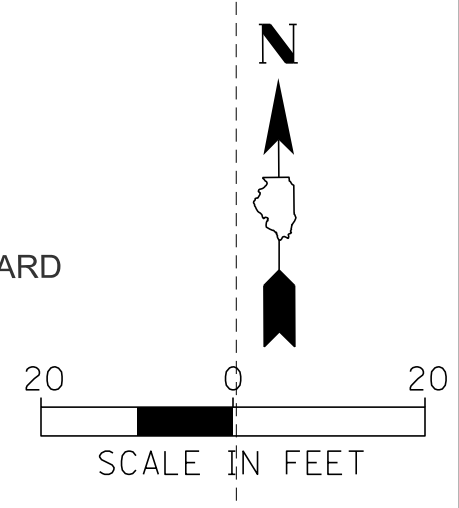
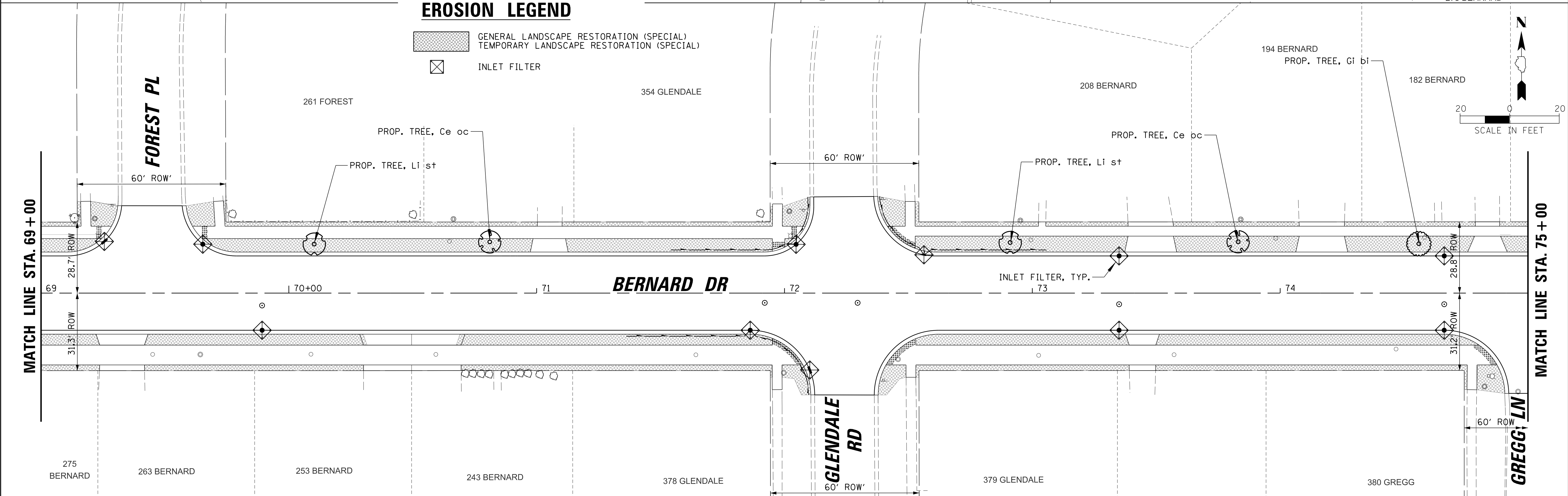


PROPOSED TREE LIST		
PAY ITEM	SYM.	DESCRIPTION
A2002879	Ce oc	TREE, CELTIS OCCIDENTALIS CHICAGOLAND, (CHICAGOLAND COMMON HACKBERRY), 2" CALIPER, BALLED AND BURLAPPED
B2010070	Cl ke	TREE, CLADRSTIS KENTUCKEA (AMERICAN YELLOWWOOD), 2" CALIPER, BALLED AND BURLAPPED
A2004512	Gi bi	TREE, GINKGO BILOBA AUTUMN GOLD (AUTUMN GOLD GINKGO), 2" CALIPER, BALLED AND BURLAPPED
A2005016	Gy di	TREE, GYMNOCLADUS DIOICUS (KENTUCKY COFFEETREE), 2" CALIPER, BALLED AND BURLAPPED
A2005328	Li st	TREE, LIQUIDAMBAR STYRACIFLUA MORAINI (MORAINI SWEETGUM), 2" CALIPER, BALLED AND BURLAPPED
A2006516	Qu bi	TREE, QUERCUS BICOLOR (SWAMP WHITE OAK), 2" CALIPER, BALLED AND BURLAPPED
A2007916	Ti am	TREE, TILIA AMERICANA REDMOND (REDMOND AMERICAN LINDEN), 2" CALIPER, BALLED AND BURLAPPED
A2007616	Tad 12	TREE, TAXODIUM DISTICHUM (COMMON BALD CYPRESS), 2" CALIPER, BALLED AND BURLAPPED



**EROSION LEGEND**

- GENERAL LANDSCAPE RESTORATION (SPECIAL)
- TEMPORARY LANDSCAPE RESTORATION (SPECIAL)
- INLET FILTER



FILE NAME = N:\BuffaloGrove\200385\G:\w1\VEG-ah+CL.ECP\_02.dgn

**CHRISTOPHER B. BURKE ENGINEERING, LTD.**  
 9575 W. Higgins Road, Suite 600  
 Rosemont, Illinois 60018  
 (847) 823-0500



**Village of Buffalo Grove**  
 51 RAUPP BOULEVARD  
 BUFFALO GROVE, ILLINOIS 60089  
 (847) 459-2500

NO.	DATE	NATURE OF REVISION	CHKD.	DGN.	VMR	TITLE:
2	11/07/23	ADDED TWO INLET FILTERS		DWN.	MAK	<b>BERNARD DRIVE EROSION CONTROL AND LANDSCAPING PLAN</b>
				CHKD.	LMF	
				USER NAME = nhowellindgren		
				PLOT DATE = 11/8/2023		SCALE: 1:20

SECTION: 20-00108-01-RS  
 DATE: 11/8/2023  
 SHEET 20 OF 97



FILE NAME = N:\BuffaloGrove\200385\Civil\VEG-aht-CL-ADA.3.dgn

POINT	STATION	OFFSET	ELEV.
23-A	63+75.17	15.00' LT	683.56
23-B	63+83.83	16.83' LT	683.41
23-C	63+91.11	21.95' LT	683.26
23-D	63+89.05	22.08' LT	683.26
23-E	63+85.94	22.07' LT	683.28
23-F	63+82.23	22.05' LT	683.33
23-G	63+94.78	27.01' LT	683.16
23-H	63+93.11	27.10' LT	683.16
23-I	63+85.91	27.07' LT	683.21
23-J	63+82.20	27.05' LT	683.26
23-K	63+86.37	35.09' LT	(683.00)
23-L	63+82.69	35.16' LT	(683.12)
23-M	63+97.92	46.38' LT	(682.17)

(XXX.XX) = EXISTING ELEVATION

POINT	STATION	OFFSET	ELEV.
23-N	64+18.59	46.97' LT	(682.18)
23-O	64+25.17	27.02' LT	683.11
23-P	64+27.04	27.11' LT	683.11
23-Q	64+30.49	41.40' LT	(682.59)
23-R	64+34.03	41.93' LT	(682.64)
23-S	64+32.20	27.09' LT	683.16
23-T	64+35.95	27.08' LT	683.19
23-U	64+50.00	27.00' LT	683.46
23-V	64+30.04	21.95' LT	683.20
23-W	64+32.37	22.09' LT	683.20
23-X	64+35.93	22.08' LT	683.25
23-Y	64+50.00	22.00' LT	683.39
23-Z	64+38.96	16.81' LT	683.34
23-AA	64+49.07	15.00' LT	683.49
23-AB	64+08.79	26.66' LT	683.17
23-AC	64+09.02	21.38' LT	683.22

(XXX.XX) = EXISTING ELEVATION

